

Product datasheet for **RC229928**

HPD (NM_001171993) Human Tagged ORF Clone

Product data:

Product Type: Expression Plasmids
Product Name: HPD (NM_001171993) Human Tagged ORF Clone
Tag: Myc-DDK
Symbol: HPD
Synonyms: 4-HPPD; 4HPPD; GLOD3; HPPDASE; PPD
Mammalian Cell Selection: Neomycin
Vector: pCMV6-Entry (PS100001)
E. coli Selection: Kanamycin (25 ug/mL)
ORF Nucleotide Sequence: >RC229928 representing NM_001171993
Red=Cloning site Blue=ORF Green=Tags(s)

TTTTGTAATACGACTCACTATAGGGCGGCCGGAATTCGTCGACTGGATCCGGTACCGAGGAGATCTGCC
GCC**CGGATCGCC**

ATGGGCTTTGAACCTCTAGCCTACAGGGGCTGGAGACCGGTTCCCGGGAGGTGGTCAGCCATGTAATCA
AACCAAGGGAAGATTGTGTTTGCCTCTCCTCAGCGCTCAACCCCTGGAACAAAGAGATGGCGCATCACCT
GGTGAAACACGGTGACGGAGTGAAGGACATTGCGTTCGAGGTGGAAGATTGTGACTACATCGTCAGAAA
GCACGGGAACGGGGCGCCAAAATCATGCGGGAGCCCTGGGTAGAGCAAGACAAGTTTGGGAAGGTGAAGT
TTGCTGTGCTGCAGACGTATGGGGACACCACACACCCTGGTGGAGAAGATGAAGTACATCGGCCAATT
CTTGCCTGGATATGAGGCCCGAGCGTTCATGGACCCCTACTTCCTAAACTGCCCAAATGCAGTCTGGAG
ATGATCGACCACATTGTGGGAAACCAGCCTGATCAGGAGATGGTGTCCGCCTCCGAATGGTACCTGAAAA
ACCTGCAGTTCACCGCTTCTGGTCCGTGGATGACACGCAGGTGCACACGGAATATAGCTCTCTGCGATC
CATTGTGGTGGCCAATATGAAGAGTCCATCAAGATGCCCATCAATGAGCCAGCGCCTGGCAAGAAGAAG
TCCCAGATCCAGGAATATGTGGACTATAACGGGGCGCTGGGGTCCAGCAGATCGCTCTCAAGACCGAAG
ACATCATCACAGCGATTCGCCACTTGAGAGAGAGAGCCCTGGAGTCTTATCTGTTCCTCCACGTACTA
CAAACAACCTCGGGAGAAGCTGAAGACGGCCAAGATCAAGGTGAAGGAGAACATTGATGCCCTGGAGGAG
CTGAAAATCCTGGTGGACTACGACGAGAAAGGCTACCTCCTGCAGATCTCACCAACCGGTGCAGGACC
GGCCACGCTCTCCTGGAAGTCAATCCAGCGCCACAACCACCGGTTTTGGAGCCGGCAACTTCAACTC
ACTGTTCAAGGCTTTTCGAGGAGGAGCAGAACCTGCGGGTAACCTCACCAACATGGAGACCAATGGGGT
GTGCCCGCATG

ACGCGTACGCGGCCGCTCGAGCAGAAACTCATCTCAGAAGAGGATCTGGCAGCAAATGATATCCTGGATT
ACAAGGATGACGACGATAAGGTTAA



[View online »](#)

Protein Sequence: >RC229928 representing NM_001171993
Red=Cloning site Green=Tags(s)

MGFEPLAYRGLETGSREVVSHVIKQGKIVFVLSSALNPWNKEMGDHLVKHGDGVKDIAFEVEDCDYIVQK
 ARERGAkimrepwveQDKFGKVKFAVLQTYGDTTHTLVEKMNYIGQFLPGYEAPAFMDPLLPKLPKCSLE
 MIDHIVGNQPDQEMVSASEWYLNKLFHRFWSVDDTQVHTEYSSLRISIVVANYEESIKMPINEPAPGKKK
 SQUIQEYVDYNGGAGVQHIALKTEDIITAIRHLRERGLEFLSVPSTYYKQLREKLTAKIKVKENIDALEE
 LKILVDYDEKGYLLQIFTKPVQDRPTLFLEVIQRHNSHQFGAGNFNSLFKAFEEEEQNLRGNLTNMETNGV
 VPGM

TRTRPLEQKLISEEDLAANDILDYKDDDDKV

Chromatograms: https://cdn.origene.com/chromatograms/ja1534_b10.zip

Restriction Sites: SgfI-MluI

Cloning Scheme:



ACCN: NM_001171993

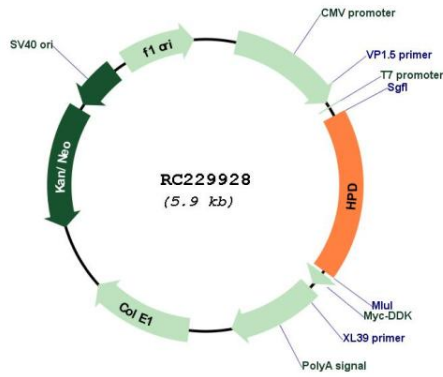
ORF Size: 1062 bp

OTI Disclaimer: Due to the inherent nature of this plasmid, standard methods to replicate additional amounts of DNA in E. coli are highly likely to result in mutations and/or rearrangements. Therefore, OriGene does not guarantee the capability to replicate this plasmid DNA. Additional amounts of DNA can be purchased from OriGene with batch-specific, full-sequence verification at a reduced cost. Please contact our customer care team at custsupport@origene.com or by calling 301.340.3188 option 3 for pricing and delivery.

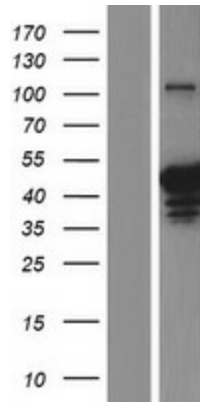
The molecular sequence of this clone aligns with the gene accession number as a point of reference only. However, individual transcript sequences of the same gene can differ through naturally occurring variations (e.g. polymorphisms), each with its own valid existence. This clone is substantially in agreement with the reference, but a complete review of all prevailing variants is recommended prior to use. [More info](#)

OTI Annotation:	This clone was engineered to express the complete ORF with an expression tag. Expression varies depending on the nature of the gene.
Components:	The ORF clone is ion-exchange column purified and shipped in a 2D barcoded Matrix tube containing 10ug of transfection-ready, dried plasmid DNA (reconstitute with 100 ul of water).
Reconstitution Method:	<ol style="list-style-type: none">1. Centrifuge at 5,000xg for 5min.2. Carefully open the tube and add 100ul of sterile water to dissolve the DNA.3. Close the tube and incubate for 10 minutes at room temperature.4. Briefly vortex the tube and then do a quick spin (less than 5000xg) to concentrate the liquid at the bottom.5. Store the suspended plasmid at -20°C. The DNA is stable for at least one year from date of shipping when stored at -20°C.
RefSeq:	<u>NM_001171993.1</u> , <u>NP_001165464.1</u>
RefSeq ORF:	1065 bp
Locus ID:	3242
UniProt ID:	<u>P32754</u>
Cytogenetics:	12q24.31
Protein Families:	Druggable Genome
Protein Pathways:	Metabolic pathways, Phenylalanine metabolism, Tyrosine metabolism, Ubiquinone and other terpenoid-quinone biosynthesis
MW:	40.9 kDa
Gene Summary:	The protein encoded by this gene is an enzyme in the catabolic pathway of tyrosine. The encoded protein catalyzes the conversion of 4-hydroxyphenylpyruvate to homogentisate. Defects in this gene are a cause of tyrosinemia type 3 (TYRO3) and hawkinsinuria (HAWK). Two transcript variants encoding different isoforms have been found for this gene. [provided by RefSeq, Jan 2010]

Product images:



Circular map for RC229928



Western blot validation of overexpression lysate (Cat# [LY432928]) using anti-DDK antibody (Cat# [TA50011-100]). Left: Cell lysates from untransfected HEK293T cells; Right: Cell lysates from HEK293T cells transfected with RC229928 using transfection reagent MegaTran 2.0 (Cat# [TT210002]).