

Product datasheet for RC229922

CHST11 (NM_001173982) Human Tagged ORF Clone

Product data:

Product Type:	Expression Plasmids
Product Name:	CHST11 (NM_001173982) Human Tagged ORF Clone
Tag:	Myc-DDK
Symbol:	CHST11
Synonyms:	C4ST; C4ST-1; C4ST1; HSA269537; OCBMD
Mammalian Cell Selection:	Neomycin
Vector:	pCMV6-Entry (PS100001)
E. coli Selection:	Kanamycin (25 ug/mL)
ORF Nucleotide Sequence:	>RC229922 representing NM_001173982 Red=Cloning site Blue=ORF Green=Tags(s)

TTTTGTAATACGACTCACTATAGGGCGGCCGGAATTCGTCGACTGGATCCGGTACCGAGGAGATCTGCC
GCC**CGATCGCC**

ATGAAGCCAGCGCTGCTGGAAGTGATGAGGATGAACAGAATCTGCCGGATGGTGTGCCACTTGCTTGG
GATCCTTTATCCTGGTCATCTTCTATTTCCAAATCATGCGGAGGAATCCCTTTGGTGTGGACATCTGCTG
CCGGAAGGGTCCCGAAGCCCCCTGCAGGAAGCTTACAACCAATCCAGCTGGAGCTCTCAAACACTGCT
GTCCTGCACCAGATGCGGCGGGACCAGGTGACAGACACGTGCCGAGCCAACAGCGCCACAAGCCGTAAGC
GGAGGGTGTGACCCCCAACGACCTGAAGCACTGGTGGTGGATGAGGACCACGAGCTCATCTACTGCTA
CGTGCCCAAGGTGGCCTGCACCAACTGGAAGCGGCTCATGATGGTCTGACCGGGCGGGGAAGTACAGC
GACCCCATGGAGATCCCGGCCAACGAGGCACACGTCTCCGCCAACCTGAAGACCTGAACCAAGTACAGCA
TCCCAGAAATCAACCACCGCTTGAAAAGCTACATGAAGTTCTGTTTGTCCGGGAGCCCTTCGAGAGGCT
AGTGTCCGCCTACCGCAACAAGTTCACCCAGAAGTACAACATCTCCTTCCACAAGCGGTACGGCACCAG
ATCATCAAACGCCAGCGGAAGAAGCCACCCAGGAGGCCCTGCGCAAAGGGGACGATGTCAAATTCGAGG
AGTTTGTGGCCTATCTCATCGACCCACACACCCAGCGGGAGGAGCCTTTCAACGAACACTGGCAAACCGT
CTACTCACTCTGCCATCCCTGCCACATCCACTATGACCTCGTGGCAAGTACGAGACACTGGAAGAGGAT
TCTAATTACGTCTGCAGCTGGCAGGAGTGGCAGTACCTGAAGTTCCCACCTATGCAAAGTCTACGA
GAACTACTGATGAAATGACCACAGAATTCTTCCAGAACATCAGCTCAGAGCACCAACGCAGCTGTACGA
AGTCTACAAACTCGATTTTTTAATGTTCAATTACTCAGTGCCAAGCTACCTGAAATTGGAA

ACGCGTACGCGGCCGCTCGAGCAGAAACTCATCTCAGAAGAGGATCTGGCAGCAAATGATATCCTGGATT
ACAAGGATGACGACGATAAGGTTTAA



[View online »](#)

Protein Sequence: >RC229922 representing NM_001173982
Red=Cloning site Green=Tags(s)

MKPALLEVMRMNRI CRMVLATCLGSFILVIFYFQIMRRNPF GVDICCRKGSRSPLQELYNPIQLELSNTA
 VLHQMRRDQVTDTCRANSATSRKRRVLTPNDLKHLVDEDEHLEIYCYVPKVACTNWKRLMMVLTGRGKYS
 DPMEIPANEAHVSANLKLTLNQYSIPEINHRLKSYMKFLFVREPFERLVSAYRNKFQKYNISFHKRYGTK
 IIKRQRKNATQEALRKGDDVKFEFVAYLIDPHTQREEPFNEHWQTVYSLCHPCHIHYDLVGKYETLEED
 SNYVLQLAGVGSYLKFPYAKSTRITDDEMTTEFFQNISSHQTLQYEVYKLDFLMFNYSVPSYLKLE

TRTRPLEQKLISEEDLAANDILDYKDDDDKV

Chromatograms: https://cdn.origene.com/chromatograms/mk8053_g01.zip

Restriction Sites: SgfI-MluI

Cloning Scheme:



ACCN: NM_001173982

ORF Size: 1041 bp

OTI Disclaimer: The molecular sequence of this clone aligns with the gene accession number as a point of reference only. However, individual transcript sequences of the same gene can differ through naturally occurring variations (e.g. polymorphisms), each with its own valid existence. This clone is substantially in agreement with the reference, but a complete review of all prevailing variants is recommended prior to use. [More info](#)

OTI Annotation: This clone was engineered to express the complete ORF with an expression tag. Expression varies depending on the nature of the gene.

Components: The ORF clone is ion-exchange column purified and shipped in a 2D barcoded Matrix tube containing 10ug of transfection-ready, dried plasmid DNA (reconstitute with 100 ul of water).

Reconstitution Method:

1. Centrifuge at 5,000xg for 5min.
2. Carefully open the tube and add 100ul of sterile water to dissolve the DNA.
3. Close the tube and incubate for 10 minutes at room temperature.
4. Briefly vortex the tube and then do a quick spin (less than 5000xg) to concentrate the liquid at the bottom.
5. Store the suspended plasmid at -20°C. The DNA is stable for at least one year from date of shipping when stored at -20°C.

RefSeq: [NM_001173982.2](#)

RefSeq ORF: 1044 bp

Locus ID: 50515

UniProt ID: [Q9NPF2](#)

Cytogenetics: 12q23.3

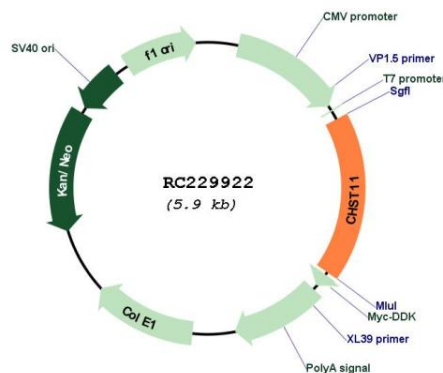
Protein Families: Transmembrane

Protein Pathways: Chondroitin sulfate biosynthesis, Sulfur metabolism

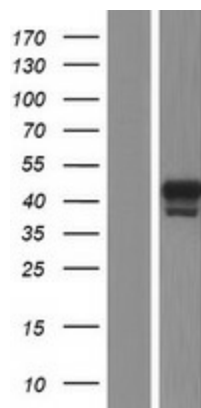
MW: 41.5 kDa

Gene Summary: The protein encoded by this gene belongs to the sulfotransferase 2 family. It is localized to the golgi membrane, and catalyzes the transfer of sulfate to position 4 of the N-acetylgalactosamine (GalNAc) residue of chondroitin. Chondroitin sulfate constitutes the predominant proteoglycan present in cartilage, and is distributed on the surfaces of many cells and extracellular matrices. A chromosomal translocation involving this gene and IgH, t(12;14)(q23;q32), has been reported in a patient with B-cell chronic lymphocytic leukemia. Alternatively spliced transcript variants encoding different isoforms have been found for this gene. [provided by RefSeq, Aug 2011]

Product images:



Circular map for RC229922



Western blot validation of overexpression lysate (Cat# [LY432922]) using anti-DDK antibody (Cat# [TA50011-100]). Left: Cell lysates from untransfected HEK293T cells; Right: Cell lysates from HEK293T cells transfected with RC229922 using transfection reagent MegaTran 2.0 (Cat# [TT210002]).