

Product datasheet for **RC229920**

TSFM (NM_001172696) Human Tagged ORF Clone

Product data:

Product Type: Expression Plasmids
Product Name: TSFM (NM_001172696) Human Tagged ORF Clone
Tag: Myc-DDK
Symbol: TSFM
Synonyms: EFTS; EFTSMT
Mammalian Cell Selection: Neomycin
Vector: pCMV6-Entry (PS100001)
E. coli Selection: Kanamycin (25 ug/mL)
ORF Nucleotide Sequence: >RC229920 representing NM_001172696
Red=Cloning site Blue=ORF Green=Tags(s)

TTTTGTAATACGACTCACTATAGGGCGGCCGGAATTCGTCGACTGGATCCGGTACCGAGGAGATCTGCC
GCC**CGGATCGCC**

ATGTCGCTGCTGCGGTGCTGCGGTGTTTCTGGTCGCGCGGACCGGGAGCTACCCGGCTGGGTCTCTTC
TGCGTCAGTCGCCCCAGCCAAGGCACACATTTTATGCTGGGCCCGTCTGTCTGCCTCGGCCCTCCAGCAA
GGAGCTCCTCATGAAGCTGCGGCGGAAAACAGGCTACTCCTTTGTAATGCAAGAAAGCTGGAGACT
TGTGGCGGGACCTCAAACAGGCAGAGATCTGGCTCCACAAGGAGGCCAGAAGGAGGGCTGGAGCAAAG
CTGCCAAGCTCCAAGGGAGGAAGACCAAAGAAGCCTGATTGGGCTGTTGCAGGAAGGAAACACAAGTGT
ATTAGTAGAGGTAAGTGTGAGACAGATTTTGTCTAGAAATTTAAATTTCAACTGTTGGTCCAGCAA
GTAGCCCTTGGAAACCATGATGCATTGTCAGACCCTAAAGGATCAACCCTCTGCATACAGTAAAGTGCAGT
GGCTCACGCCCTGTAACCTAGCACTTTGGGAGGCTGAAGCAGGTGGATCACTTGAGGGTTTCTTGAATTC
CTCTGAGCTTTCTGGACTTCCAGCTGGGCCGTCAGAGAAAGGCTCAAGGATCAGTTGGCTTTAGCA
ATTGAAAAGTGGGAGAAAACATGATTCTTAAACGAGCTGCATGGGTGAAGTGCCATCTGGGTTTACG
TTGGCTCTATGTCCACGGAGCAATGCAGAGTCCCTCACTTACAAGCTGGTGTGGGGAAGTATGGGGC
CCTGGTCATCTGTGAGACGTCTGAACAGAAAACAACTTGAAGACGTTGGCCCGCCTTGGGCAGCAT
GTGGTGGGCATGGCCCCCTCTGTTGGCTCCCTGGACGATGAGCCTGGGGGAGAGGCAGAGACTAAGA
TGCTGTCCAGCCGATTTGCTGGATCCCTCCATTACCTTGGGGCAGTATGTGCAGCCTCAGGGGTGTC
GGTAGTAGACTTTGTGCGGTTTGAATGTGGAGAAGGTGAAGAGGCAGCAGAACTGAA

ACGCGTACGCGGCCGCTCGAGCAGAACTCATCTCAGAAGAGGATCTGGCAGCAAATGATATCCTGGATT
ACAAGGATGACGACGATAAGGTTTAA



[View online >](#)

Protein Sequence: >RC229920 representing NM_001172696
Red=Cloning site Green=Tags(s)

MSLLRSLRVFLVARTGSYPAGSLLRQSPQPRHTFYAGPRLSASASSKELLMKLRRTGYSFVNCKKALET
 CGGDLKQAEIWLHKEAQKEGWSKAAKLQGRKTK EGLIGLLQEGNTTVLVEVNCETDFVSRNLKFQLLVQQ
 VALGTMHHCQTLKDQPSAYSYSKVQWLTPVNLALWEAEAGGSLEGFLNNSSEL SGLPAGPDREGSLKDQLALA
 IGKLGEMMILKRAAWVKVPSGFYVGSYVHGAMQSPSLHKLVLGKYGALVICETSEQKTNLEDEVGRRRLGQH
 VVGMAPLSVGSGLDDEPGGEAETKMLSQPYLLDPSITLGGYVQPQGVSVVDFVRFECGEGEEAAETE

TRTRPLEQKLISEEDLAANDILDYKDDDDKV

Chromatograms: https://cdn.origene.com/chromatograms/ja1498_b05.zip

Restriction Sites: SgfI-MluI

Cloning Scheme:



ACCN: NM_001172696

ORF Size: 1038 bp

OTI Disclaimer: The molecular sequence of this clone aligns with the gene accession number as a point of reference only. However, individual transcript sequences of the same gene can differ through naturally occurring variations (e.g. polymorphisms), each with its own valid existence. This clone is substantially in agreement with the reference, but a complete review of all prevailing variants is recommended prior to use. [More info](#)

OTI Annotation: This clone was engineered to express the complete ORF with an expression tag. Expression varies depending on the nature of the gene.

Components: The ORF clone is ion-exchange column purified and shipped in a 2D barcoded Matrix tube containing 10ug of transfection-ready, dried plasmid DNA (reconstitute with 100 ul of water).

Reconstitution Method:

1. Centrifuge at 5,000xg for 5min.
2. Carefully open the tube and add 100ul of sterile water to dissolve the DNA.
3. Close the tube and incubate for 10 minutes at room temperature.
4. Briefly vortex the tube and then do a quick spin (less than 5000xg) to concentrate the liquid at the bottom.
5. Store the suspended plasmid at -20°C. The DNA is stable for at least one year from date of shipping when stored at -20°C.

RefSeq: [NM_001172696.2](#)

RefSeq ORF: 1041 bp

Locus ID: 10102

UniProt ID: [P43897](#)

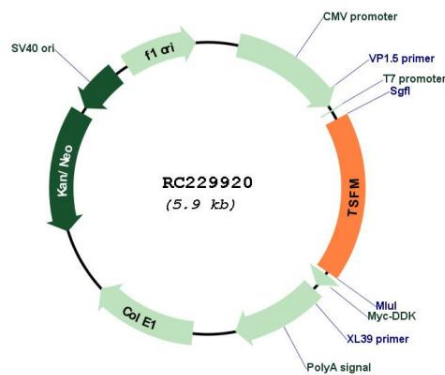
Cytogenetics: 12q14.1

Protein Families: Transcription Factors

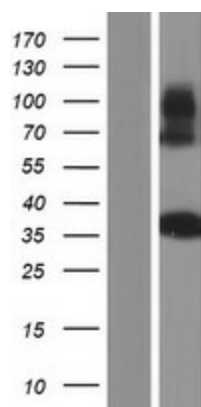
MW: 38.1 kDa

Gene Summary: This gene encodes a mitochondrial translation elongation factor. The encoded protein is an enzyme that catalyzes the exchange of guanine nucleotides on the translation elongation factor Tu during the elongation step of mitochondrial protein translation. Mutations in this gene are associated with combined oxidative phosphorylation deficiency-3 syndrome. Alternate splicing results in multiple transcript variants.[provided by RefSeq, Mar 2010]

Product images:



Circular map for RC229920



Western blot validation of overexpression lysate (Cat# [LY432920]) using anti-DDK antibody (Cat# [TA50011-100]). Left: Cell lysates from untransfected HEK293T cells; Right: Cell lysates from HEK293T cells transfected with RC229920 using transfection reagent MegaTran 2.0 (Cat# [TT210002]).