

## Product datasheet for RC229917

### CD84 (NM\_001184879) Human Tagged ORF Clone

#### Product data:

Product Type:	Expression Plasmids
Product Name:	CD84 (NM_001184879) Human Tagged ORF Clone
Tag:	Myc-DDK
Symbol:	CD84
Synonyms:	hCD84; LY9B; mCD84; SLAMF5
Mammalian Cell Selection:	Neomycin
Vector:	pCMV6-Entry (PS100001)
E. coli Selection:	Kanamycin (25 ug/mL)
ORF Nucleotide Sequence:	>RC229917 representing NM_001184879 Red=Cloning site Blue=ORF Green=Tags(s)

TTTTGTAATACGACTCACTATAGGGCGGCCGGAATTCGTCGACTGGATCCGGTACCGAGGAGATCTGCC  
GCC**CGATCGCC**

ATGGCTCAGCACCTATGGATCTTGCTCCTTTGCCTGCAAACCTGGCCGGAAGCAGCTGGAAAAGACT  
CAGAAATCTTCACAGTGAATGGATTCTGGGAGAGTCAGTCACCTTCCCTGTAATATCCAAGAACCAG  
GCAAGTAAAATCATTGCTTGGACTTCTAAAACATCTGTTGCTTATGTAAACCAGGAGACTCAGAAACA  
GCACCCGTAGTTACTGTGACCCACAGAAATTATTGAACGGATACATGCCTTAGGTCGAACTACAATC  
TGGTCATTAGCGATCTGAGGATGGAAGACGCAGGAGACTACAAAGCAGACATAAAATACACAGGCTGATCC  
CTACACCACCAAGCGCTACAACCTGCAAATCTATCGTCGGCTTGGGAAACAAAAATTACACAGAGT  
TTAATGGCATCTGTGAACAGCACCTGTAATGTCACACTGACATGCTCTGTAGAGAAAAGAAGAAAAGAAATG  
TGACATACAATTGGAGTCCCCTGGGAGAAGAGGGTAATGTCTTCAAATCTTCCAGACTCCTGAGGACCA  
AGAGCTGACTTACACGTGTACAGCCCAGAACCTGTCAGCAACAATTCTGACTCCATCTCTGCCCGGCGAG  
CTCTGTGCAGACATCGCAATGGGCTTCCGTACTCACCACACCGGGTTGCTGAGCGTGCTGGCTATGTTCT  
TTCTGCTGTTCTCATTCTGTCTTCAGTGTTTTTGTCCGTTTGTTCAGAGAAGACAAGGTAGGATTTT  
CCCAGAAGTTCTGCTTGAACACCTTCACTAAGAACCCTATGCTGCCTCAAAGAAAACCATATACACA  
TATATCATGGCTTCAAGGAACCCAGCCAGCAGAGTCCAGAATCTATGATGAAATCCTGCAGTCCAAGG  
TGCTTCCCTCCAAGGAAGCCAGTGAACACAGTTTATTCCGAAGTGCAGTTTGTGATAAGATGGGGAA  
AGCCAGCACAGGACAGTAAACCTCCTGGGACTTCAAGCTATGAAATTGTGATC

**ACGCGT**ACGCGGCCGCTCGAGCAGAAACTCATCTCAGAAGAGGATCTGGCAGCAATGATATCCTGGATT  
ACAAGGATGACGACGATAAGGTTTAA



[View online »](#)

**Protein Sequence:** >RC229917 representing NM\_001184879  
Red=Cloning site Green=Tags(s)

MAQHHLWILLLLCLQTWPEAAGKDSEIFTVNGILGESVTFPVNIQEPRQVKIIAWTSKTSVAYVTPGDSET  
 APVVTVTHRNYERIHALGPNYNLVIDLRMEDAGDYKADINTQADPYTTTKRYNLQIYRRLGPKKITQS  
 LMASVNSTCNVTLTCSVEKEEKNVTYNWSPLGEEGNVLQIFQTPEDQELTYTCTAQNPVSNNSDSISARQ  
 LCADIAMGFRTHHTGLLSVLAMFFLLVLILSSVFLFRLFKRRQGRIFPEGSCLNFTKPNPYAASKKTIYT  
 YIMASRNTQPAESRIYDEILQSKVLPKEEPVNTVYSEVQFADKMGKASTQDSKPPGTSSYEIVI

TRTRPLEQKLISEEDLAANDILDYKDDDDKV

**Chromatograms:** [https://cdn.origene.com/chromatograms/mk8053\\_f06.zip](https://cdn.origene.com/chromatograms/mk8053_f06.zip)

**Restriction Sites:** SgfI-MluI

**Cloning Scheme:**

Cloning sites used for ORF Shutting:



\* The last codon before the Stop codon of the ORF

**ACCN:** NM\_001184879

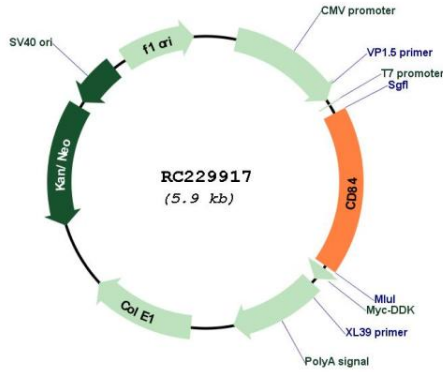
**ORF Size:** 1035 bp

**OTI Disclaimer:** Due to the inherent nature of this plasmid, standard methods to replicate additional amounts of DNA in E. coli are highly likely to result in mutations and/or rearrangements. Therefore, OriGene does not guarantee the capability to replicate this plasmid DNA. Additional amounts of DNA can be purchased from OriGene with batch-specific, full-sequence verification at a reduced cost. Please contact our customer care team at [custsupport@origene.com](mailto:custsupport@origene.com) or by calling 301.340.3188 option 3 for pricing and delivery.

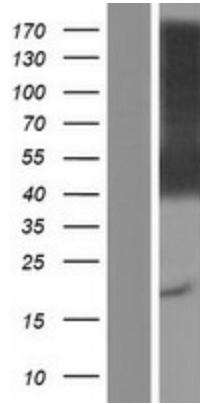
The molecular sequence of this clone aligns with the gene accession number as a point of reference only. However, individual transcript sequences of the same gene can differ through naturally occurring variations (e.g. polymorphisms), each with its own valid existence. This clone is substantially in agreement with the reference, but a complete review of all prevailing variants is recommended prior to use. [More info](#)

<b>OTI Annotation:</b>	This clone was engineered to express the complete ORF with an expression tag. Expression varies depending on the nature of the gene.
<b>Components:</b>	The ORF clone is ion-exchange column purified and shipped in a 2D barcoded Matrix tube containing 10ug of transfection-ready, dried plasmid DNA (reconstitute with 100 ul of water).
<b>Reconstitution Method:</b>	<ol style="list-style-type: none"><li>1. Centrifuge at 5,000xg for 5min.</li><li>2. Carefully open the tube and add 100ul of sterile water to dissolve the DNA.</li><li>3. Close the tube and incubate for 10 minutes at room temperature.</li><li>4. Briefly vortex the tube and then do a quick spin (less than 5000xg) to concentrate the liquid at the bottom.</li><li>5. Store the suspended plasmid at -20°C. The DNA is stable for at least one year from date of shipping when stored at -20°C.</li></ol>
<b>RefSeq:</b>	<a href="#">NM_001184879.2</a>
<b>RefSeq ORF:</b>	1038 bp
<b>Locus ID:</b>	8832
<b>UniProt ID:</b>	<a href="#">Q9UIB8</a>
<b>Cytogenetics:</b>	1q23.3
<b>Protein Families:</b>	Druggable Genome, Transmembrane
<b>MW:</b>	39.2 kDa
<b>Gene Summary:</b>	This gene encodes a membrane glycoprotein that is a member of the signaling lymphocyte activation molecule (SLAM) family. This family forms a subset of the larger CD2 cell-surface receptor Ig superfamily. The encoded protein is a homophilic adhesion molecule that is expressed in numerous immune cells types and is involved in regulating receptor-mediated signaling in those cells. Alternate splicing results in multiple transcript variants. [provided by RefSeq, Oct 2011]

Product images:



Circular map for RC229917



Western blot validation of overexpression lysate (Cat# [LY432917]) using anti-DDK antibody (Cat# [TA50011-100]). Left: Cell lysates from untransfected HEK293T cells; Right: Cell lysates from HEK293T cells transfected with RC229917 using transfection reagent MegaTran 2.0 (Cat# [TT210002]).