

## Product datasheet for RC229915

### KIST (UHK1) (NM\_144624) Human Tagged ORF Clone

#### Product data:

Product Type:	Expression Plasmids
Product Name:	KIST (UHK1) (NM_144624) Human Tagged ORF Clone
Tag:	Myc-DDK
Symbol:	KIST
Synonyms:	KIS; KIST; P-CIP2
Mammalian Cell Selection:	Neomycin
Vector:	pCMV6-Entry (PS100001)
E. coli Selection:	Kanamycin (25 ug/mL)
ORF Nucleotide Sequence:	>RC229915 representing NM_144624 Red=Cloning site Blue=ORF Green=Tags(s)

TTTTGTAATACGACTCACTATAGGGCGGCCGGAATTCGTCGACTGGATCCGGTACCGAGGAGATCTGCC  
GCC**CGATCGCC**

ATGGCGGGATCCGGCTGCGCCTGGGGCGCGGAGCCGCCGCTTTTCTGGAGGCCTTCGGGCGGCTGTGGC  
AGGTACAGAGCCGTCTGGGTAGCGGCTCCTCCGCTCGGTGTATCGGGTTCGCTGCTGCGCAACCCTGG  
CTCGCCCCCGGCGCCCTCAAGCAGTTCTTGCCGCCAGGAACCACGGGGCTGCGCCTCTGCCCGGAG  
TATGGTTTCCGCAAAGAGAGGGCGCGCTGGAACAGTTGCAGGGTCACAGAAACATCGTACTTTGTATG  
GAGTGTTTACAATCCACTTTTCTCCAAATGTGCCATCACGCTGTCTGTTGCTTGAACCTCTGGATGTCAG  
TGTTTCGGAATTGCTCTTATATTCCAGTACCAGGGTTGTTCCATGTGGATGATACAGCATTGTGCCCGA  
GATGTTTTGGAGGCCCTTCTTTCTTTCATCATGAGGGCTATGTCCATGCGGACCTCAAACCACGTAACA  
TATTGTGGAGTGCAGAGAATGAATGTTTTAACTCATTGACTTTGGACTTAGCTTCAAAGAAGGCAATCA  
GGATGTAAAGTATATTCCAGACAGACGGGTATCGGGCTCCAGAAGCAGAATTGCAAAATGCTTGGCCAG  
GCTGGCCTGCAGAGTGATACAGAATGTACCTCAGCTGTTGATCTGTGGAGCCTAGGAATCATTTTACTGG  
AAATGTTCTCAGGAATGAACTGAAACATACAGTCAGATCTCAGGAATGGAAGGCAAACAGTTCTGCTAT  
TATTGATCACATATTTGCCAGTAAAGCAGTGGTGAATGCCGAATCCAGCCTATCACCTAAGAGACCTT  
ATCAAAAGCATGCTTTCATGATGATCCAAGCAGAAGAATTCCTGCTGAAATGGCATTGTGCAACCCATTCT  
TTAGCATTCTTTTGGCCCTCATATTGAAGATCTGGTCATGCTTCCCACTCCAGTGCTAAGACTGCTGAA  
TGTGCTGGATGATGATTATCTTGAGAATGAAGAGGAATATGAAGGTCTTTGT

**ACGCGT**ACGCGGCCGCTCGAGCAGAACTCATCTCAGAAGAGGATCTGGCAGCAATGATATCCTGGATT  
ACAAGGATGACGACGATAAGGTTTAA



[View online »](#)

**Protein Sequence:** >RC229915 representing NM\_144624  
Red=Cloning site Green=Tags(s)

MAGSGCAWGAEPFRLEAFGRWLQVQSRLGSGSSASVYRVRCGNGPSPGALKQFLPPGTTGAAASAAE  
 YGFRKERAALQLQGHRNIVTL YGVFTIHFSPNVPSRCLLLELLDVSVSELLLYSSHQGCMMMIQHCAR  
 DVLEALAFHHEGYVHADLKPRNILWSAENECFKLIDFGLSFKEGNQDVKIYQTDGYRAPEALQNCLAQ  
 AGLQSDTECTSAVDLWSLGIILLEMFSGMKLKHTVRSQEWKANSSAIIDHIFASKAVVNAAIPAYHLRDL  
 IKSMHLDDPSRRIPAEMALCSPFFSIPFAPHIEDLVMLPTPVLRLLNLVDDDDYLENEEYEGLC

TRTRPLEQKLISEEDLAANDILDYKDDDDKV

**Chromatograms:** [https://cdn.origene.com/chromatograms/ja1508\\_d05.zip](https://cdn.origene.com/chromatograms/ja1508_d05.zip)

**Restriction Sites:** SgfI-MluI

**Cloning Scheme:**



**ACCN:** NM\_144624

**ORF Size:** 1032 bp

**OTI Disclaimer:** The molecular sequence of this clone aligns with the gene accession number as a point of reference only. However, individual transcript sequences of the same gene can differ through naturally occurring variations (e.g. polymorphisms), each with its own valid existence. This clone is substantially in agreement with the reference, but a complete review of all prevailing variants is recommended prior to use. [More info](#)

**OTI Annotation:** This clone was engineered to express the complete ORF with an expression tag. Expression varies depending on the nature of the gene.

**Components:** The ORF clone is ion-exchange column purified and shipped in a 2D barcoded Matrix tube containing 10ug of transfection-ready, dried plasmid DNA (reconstitute with 100 ul of water).

**Reconstitution Method:**

1. Centrifuge at 5,000xg for 5min.
2. Carefully open the tube and add 100ul of sterile water to dissolve the DNA.
3. Close the tube and incubate for 10 minutes at room temperature.
4. Briefly vortex the tube and then do a quick spin (less than 5000xg) to concentrate the liquid at the bottom.
5. Store the suspended plasmid at -20°C. The DNA is stable for at least one year from date of shipping when stored at -20°C.

**RefSeq:** [NM\\_144624.2](#), [NP\\_653225.2](#)

**RefSeq ORF:** 1035 bp

**Locus ID:** 127933

**UniProt ID:** [Q8TAS1](#)

**Cytogenetics:** 1q23.3

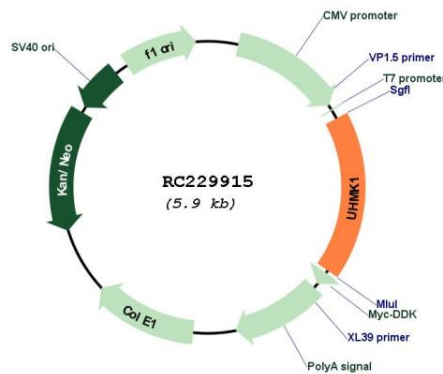
**Domains:** pkinase, TyrKc, S\_TKc

**Protein Families:** Druggable Genome, Protein Kinase

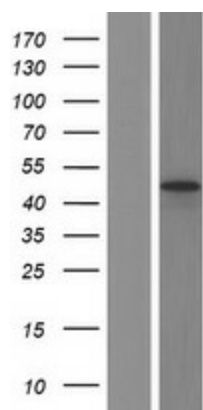
**MW:** 38.6 kDa

**Gene Summary:** The gene encodes a serine/threonine protein kinase that promotes cell cycle progression through G1 by phosphorylation of the cyclin-dependent kinase inhibitor 1B (p27Kip1), which causes nuclear export and degradation. The encoded protein is also thought to function in the adult nervous system and the gene has been associated with schizophrenia. Alternative splicing results in multiple transcript variants. [provided by RefSeq, May 2010]

### Product images:



Circular map for RC229915



Western blot validation of overexpression lysate (Cat# [LY432915]) using anti-DDK antibody (Cat# [TA50011-100]). Left: Cell lysates from untransfected HEK293T cells; Right: Cell lysates from HEK293T cells transfected with RC229915 using transfection reagent MegaTran 2.0 (Cat# [TT210002]).