

Product datasheet for RC229909

SIGLEC6 (NM_001177549) Human Tagged ORF Clone

Product data:

Product Type:	Expression Plasmids
Product Name:	SIGLEC6 (NM_001177549) Human Tagged ORF Clone
Tag:	Myc-DDK
Symbol:	SIGLEC6
Synonyms:	CD33L; CD33L1; CD33L2; CD327; CDW327; OBBP1
Mammalian Cell Selection:	Neomycin
Vector:	pCMV6-Entry (PS100001)
E. coli Selection:	Kanamycin (25 ug/mL)
ORF Nucleotide Sequence:	>RC229909 representing NM_001177549 Red=Cloning site Blue=ORF Green=Tags(s)

TTTTGTAATACGACTCACTATAGGGCGGCCGGAATTCGTCGACTGGATCCGGTACCGAGGAGATCTGCC
GCCCGGATCGCC

ATGCAAGGAGCCAGGAAGCCTCCGCCTCAGAGATGCTACCGCTGCTGCTGCCCTGCTGTGGCAGGGG
CCCTGGCTCAGGAGCGGAGATTCAGCTGGAGGGCCAGAGTCACTGACGGTGCAGGAGGGTCTGTGCGT
CCTCGTACCCTGCAGATTGCCACTACCCTTCAGCCTCGTACTATGGTTATGGTACTGGTTCTGGAA
GGGGCTGATGTTCCAGTGGCCACAAACGACCCAGACGAAGAAGTGCAGGAGGAGACCCGGGGCCGATTCC
ACCTCCTCTGGGATCCCAGAAGGAAGAACTGCTCCCTGAGCATCAGAGATGCCCGGAGGAGGACAATGC
TGCACTACTCTTTCGGTTGAAGTCCAAATGGATGAAATACGGTTATACATCTTCCAAGCTCTCTGTGCGT
GTGATGGGGACCCCTGGAGTCTGGCCATCCAGCAATCTGACCTGCTCTGTGCCCTGGGTCTGTGAGCAGG
GGACGCCCCCATCTTCTCCTGGATGTCAGCTGCCCCACCTCCCTGGGCCCCAGGACCACCCAGTCCTC
GGTGCTCAAAATCACCCACGGCCCCAGGACCACAGCACCAACCTCACCTGTCAGGTGACGTTCCCTGGA
GCCGGTGTGACCATGGAGAGAACCATCCAGCTCAATGTCTCCTATGCTCCACAGAAAGTGGCCATCAGCA
TCTTCCAAGGAAACAGCGCAGCCTTCAAATCCTGCAAAACACCTCGTCCCTCCCTGTCTGGAGGGCCA
GGCTCTGCGGCTGCTCTGTGATGCTGACGGCAACCCCTGCACACCTGAGCTGGTTCAGGGCTTCCCC
GCCCTGAACGCCACCCCATCTCCAATACCGGGTCTGGAGCTGCCTCAAGTAGGGTCTGCAGAAGAAG
GAGATTTACCTGCCGTGCTCAGCATCCTCTGGGCTCCCTGCAAAATCTCTCTGAGTCTCTTGTGCATTG
GTCATCAGCACCAGTTCCAGACAGGCATAGTTTCAGACCACCCTGC

ACGCGTACGCGGCCGCTCGAGCAGAACTCATCTCAGAAGAGGATCTGGCAGCAATGATATCCTGGATT
ACAAGGATGACGACGATAAGGTTTAA



[View online »](#)

Protein Sequence: >RC229909 representing NM_001177549
Red=Cloning site Green=Tags(s)

MQGAQEASASEMLPLLLPLLWAGALAQERRFQLEGPELTVQEGLCVLPCRLPTTLPASYYGWYWFLE
 GADVPVATNDPDEEVQEEETRGRFHLLWDP RRKNC SL SIRDARRRDNAAYFFRLKSKWMKYGTSSKL SVR
 VMGTLESGHPSNLTCSVPWVCEQGTPIFSWMSAAPTSLGPRTTQSSVLTITPRPQDHSNLTQCQVTFPG
 AGVTMERTIQLNVSYPQKVAISIFQGN SAAF K I L QNTSSLPVLEGQALRLLCDADGNPPAHL SWFQGF
 ALNATPISNTGVLELPQVGSAAEGDFTCRAQHPLGSLQISLSLFVHSSAPV PDRHSFRPPC

TRTRPLEQKLISEEDLAANDILDYKDDDDKV

Chromatograms: https://cdn.origene.com/chromatograms/mk8053_d12.zip

Restriction Sites: SgfI-MluI

Cloning Scheme:

Cloning sites used for ORF Shuttling:



* The last codon before the Stop codon of the ORF

ACCN: NM_001177549

ORF Size: 1026 bp

OTI Disclaimer: The molecular sequence of this clone aligns with the gene accession number as a point of reference only. However, individual transcript sequences of the same gene can differ through naturally occurring variations (e.g. polymorphisms), each with its own valid existence. This clone is substantially in agreement with the reference, but a complete review of all prevailing variants is recommended prior to use. [More info](#)

OTI Annotation: This clone was engineered to express the complete ORF with an expression tag. Expression varies depending on the nature of the gene.

Components: The ORF clone is ion-exchange column purified and shipped in a 2D barcoded Matrix tube containing 10ug of transfection-ready, dried plasmid DNA (reconstitute with 100 ul of water).

Reconstitution Method:

1. Centrifuge at 5,000xg for 5min.
2. Carefully open the tube and add 100ul of sterile water to dissolve the DNA.
3. Close the tube and incubate for 10 minutes at room temperature.
4. Briefly vortex the tube and then do a quick spin (less than 5000xg) to concentrate the liquid at the bottom.
5. Store the suspended plasmid at -20°C. The DNA is stable for at least one year from date of shipping when stored at -20°C.

RefSeq: [NM_001177549.3](#)

RefSeq ORF: 1029 bp

Locus ID: 946

UniProt ID: [O43699](#)

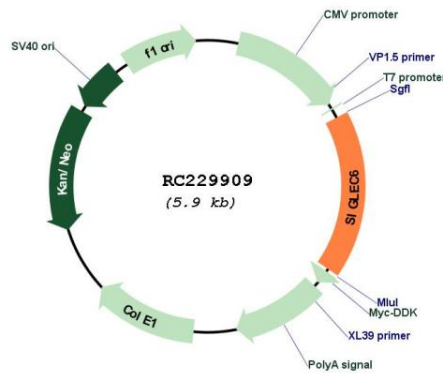
Cytogenetics: 19q13.41

Protein Families: Druggable Genome, Secreted Protein, Transmembrane

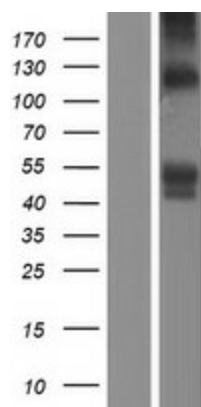
MW: 38.1 kDa

Gene Summary: This gene encodes a member of the SIGLEC (sialic acid binding immunoglobulin-like lectin) family of proteins. The encoded transmembrane receptor binds sialyl-TN glycans and leptin. Placental expression of the encoded protein is upregulated in preeclampsia. [provided by RefSeq, Jul 2016]

Product images:



Circular map for RC229909



Western blot validation of overexpression lysate (Cat# [LY432909]) using anti-DDK antibody (Cat# [TA50011-100]). Left: Cell lysates from untransfected HEK293T cells; Right: Cell lysates from HEK293T cells transfected with RC229909 using transfection reagent MegaTran 2.0 (Cat# [TT210002]).