

## Product datasheet for **RC229894**

### SSH3BP1 (ABI1) (NM\_001178125) Human Tagged ORF Clone

#### Product data:

Product Type:	Expression Plasmids
Product Name:	SSH3BP1 (ABI1) (NM_001178125) Human Tagged ORF Clone
Tag:	Myc-DDK
Symbol:	SSH3BP1
Synonyms:	ABI-1; ABLBP4; E3B1; NAP1BP; SSH3BP; SSH3BP1
Mammalian Cell Selection:	Neomycin
Vector:	pCMV6-Entry (PS100001)
E. coli Selection:	Kanamycin (25 ug/mL)
ORF Nucleotide Sequence:	>RC229894 representing NM_001178125 Red=Cloning site Blue=ORF Green=Tags(s)

TTTTGTAATACGACTCACTATAGGGCGGCCGGAATTCGTCGACTGGATCCGGTACCGAGGAGATCTGCC  
GCC**CGATCGCC**

ATGGCAGAGCTGCAGATGTTACTAGAGGAGGAGATCCCGTCTGGCAAGAGGGCGCTGATCGAGAGTTACC  
AGAACCTGACTCGGGTGGCAGACTACTGTGAAAACAACACATACAGGCTACAGACAAGAGAAAAGCTTT  
AGAGGAGACCAAAGCCTATACAACCAATCTCTAGCTAGTGTGCTTATCAAATAAATGCATTGGCCAAC  
AATGTAATCCAGTTGCTGGATATCCAAGCCTCTCAGCTTCGGAGAATGGAGTCTCCATCAATCATATCT  
CACAGCATGGAAATAACCAGCCTGCAAGAACTGGCACACTGTCGAGAACAATCCTCCTACTCAGAAACC  
GCCAAGTCTCCATGTCAGGCCGGGAACACTGGGACGGAATACTCCTTATAAAACCCTGGAACCTGTT  
AAACCCCAACAGTTCCTAATGACTATATGACCAGTCTGCTAGGCTTGGAAAGTCAGCATAGTCCAGGCA  
GGACAGCATCTTTAAATCAGAGACCAAGGACACACAGTGGAAAGTAGTGGAGGAAGTGGAAAGTCGAGAAAA  
CAGTGGTAGCAGTAGTATTGGCATTCCCATTTGCTGTGCCACACCTTCGCCACCCACTATTGGACCAGTT  
GCTGATAGTCCAACCTCCACGCCACCACCTCCACCAGATGACATTCCCATGTTTGATGACTCTCCACCTC  
CCCCACCACCACCAGTGGATTATGAAGATGAGGAGGCTGCAGTAGTTCAGTATAATGATCCATATGC  
AGATGGGATCCTGCTTGGGCCCAAGAATTATATTGAGAAAGTTGTTGCAATATATGATTATACAAAA  
GACAAGGATGATGAGCTGCATTTATGGAGGGTGAATCATTATGTTATAAAGAAGAATGATGATGGCT  
GGTATGAAGGAGTCTGCAATCGAGTGACTGGTCTGTTCCCTGGAACTATGTTGAATCAATCATGCACTA  
TACTGAT

**ACGCGT**ACGCGGCCGCTCGAGCAGAACTCATCTCAGAAGAGGATCTGGCAGCAATGATATCCTGGATT  
ACAAGGATGACGACGATAAGGTTTAA



[View online »](#)

**Protein Sequence:** >RC229894 representing NM\_001178125  
Red=Cloning site Green=Tags(s)

MAELQMLLEEEIPSGKRALIESYQNLTRVADYCENNYIQATDKRKALEETKAYTTQSLASVAYQINALAN  
 NVLQLLDIQASQLRRMESSINHISQHGNNQPARTGTLRTNPPTQKPPSPMSSGRGTLGRNTPYKTLPEV  
 KPPTVPNDYMTSPARLGSQHSRGTASLNQRPRTHSGSSGGSGSRENSGSSSIGIPIAVTPSPPTIGPV  
 ADSPTPPPPPPDDIPMFDDSPPPPPPPVDYEDEEAADVQYNDPYADGDPAWAPKNYIEKVVAIYDYTK  
 DKDDELSFMEGAIIVYIKKNDGWYEGVCNRVTGLFPNGYVESIMHYTD

TRTRPLEQKLISEEDLAANDILDYKDDDDKV

**Chromatograms:** [https://cdn.origene.com/chromatograms/mk8052\\_e09.zip](https://cdn.origene.com/chromatograms/mk8052_e09.zip)

**Restriction Sites:** SgfI-MluI

**Cloning Scheme:**

Cloning sites used for ORF Shuttling:



\* The last codon before the Stop codon of the ORF

**ACCN:** NM\_001178125

**ORF Size:** 987 bp

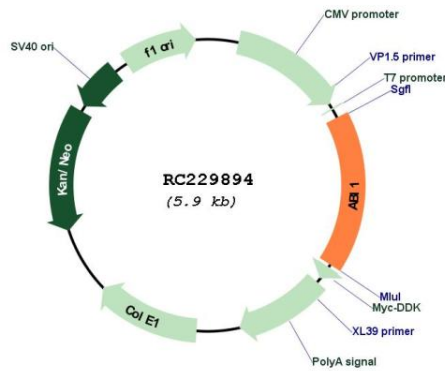
**OTI Disclaimer:** The molecular sequence of this clone aligns with the gene accession number as a point of reference only. However, individual transcript sequences of the same gene can differ through naturally occurring variations (e.g. polymorphisms), each with its own valid existence. This clone is substantially in agreement with the reference, but a complete review of all prevailing variants is recommended prior to use. [More info](#)

**OTI Annotation:** This clone was engineered to express the complete ORF with an expression tag. Expression varies depending on the nature of the gene.

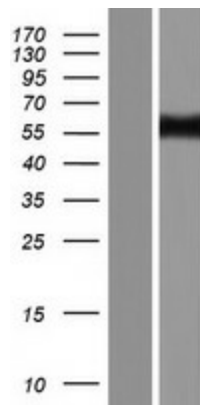
**Components:** The ORF clone is ion-exchange column purified and shipped in a 2D barcoded Matrix tube containing 10ug of transfection-ready, dried plasmid DNA (reconstitute with 100 ul of water).

<b>Reconstitution Method:</b>	<ol style="list-style-type: none"><li>1. Centrifuge at 5,000xg for 5min.</li><li>2. Carefully open the tube and add 100ul of sterile water to dissolve the DNA.</li><li>3. Close the tube and incubate for 10 minutes at room temperature.</li><li>4. Briefly vortex the tube and then do a quick spin (less than 5000xg) to concentrate the liquid at the bottom.</li><li>5. Store the suspended plasmid at -20°C. The DNA is stable for at least one year from date of shipping when stored at -20°C.</li></ol>
<b>Note:</b>	Plasmids are not sterile. For experiments where strict sterility is required, filtration with 0.22um filter is required.
<b>RefSeq:</b>	<u>NM_001178125.1, NP_001171596.1</u>
<b>RefSeq ORF:</b>	990 bp
<b>Locus ID:</b>	10006
<b>UniProt ID:</b>	<u>Q8IZP0</u>
<b>Cytogenetics:</b>	10p12.1
<b>MW:</b>	36.4 kDa
<b>Gene Summary:</b>	<p>This gene encodes a member of the Abelson-interactor family of adaptor proteins. These proteins facilitate signal transduction as components of several multiprotein complexes, and regulate actin polymerization and cytoskeletal remodeling through interactions with Abelson tyrosine kinases. The encoded protein plays a role in macropinocytosis as a component of the WAVE2 complex, and also forms a complex with EPS8 and SOS1 that mediates signal transduction from Ras to Rac. This gene may play a role in the progression of several malignancies including melanoma, colon cancer and breast cancer, and a t(10;11) chromosomal translocation involving this gene and the MLL gene has been associated with acute myeloid leukemia. Alternatively spliced transcript variants encoding multiple isoforms have been observed for this gene, and a pseudogene of this gene is located on the long arm of chromosome 14. [provided by RefSeq, Sep 2011]</p>

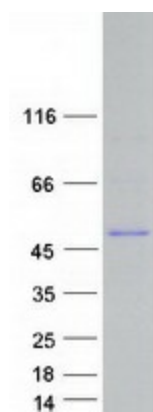
Product images:



Circular map for RC229894



Western blot validation of overexpression lysate (Cat# [LY432894]) using anti-DDK antibody (Cat# [TA50011-100]). Left: Cell lysates from untransfected HEK293T cells; Right: Cell lysates from HEK293T cells transfected with RC229894 using transfection reagent MegaTran 2.0 (Cat# [TT210002]).



Coomassie blue staining of purified ABI1 protein (Cat# [TP329894]). The protein was produced from HEK293T cells transfected with ABI1 cDNA clone (Cat# RC229894) using MegaTran 2.0 (Cat# [TT210002]).