

Product datasheet for RC229878

MAGEA8 (NM_001166400) Human Tagged ORF Clone

Product data:

Product Type:	Expression Plasmids
Product Name:	MAGEA8 (NM_001166400) Human Tagged ORF Clone
Tag:	Myc-DDK
Symbol:	MAGEA8
Synonyms:	CT1.8; MAGE8
Mammalian Cell Selection:	Neomycin
Vector:	pCMV6-Entry (PS100001)
E. coli Selection:	Kanamycin (25 ug/mL)
ORF Nucleotide Sequence:	>RC229878 representing NM_001166400 Red=Cloning site Blue=ORF Green=Tags(s)

TTTTGTAATACGACTCACTATAGGGCGGCCGGAATTCGTCGACTGGATCCGGTACCGAGGAGATCTGCC
GCC**CGATCGCC**

ATGCTTCTTGGGCAGAAGAGTCAGCGCTACAAGGCTGAGGAAGGCCTTCAGGCCAAGGAGAGGCCACCAG
GGCTTATGGATGTGCAGATCCCACAGCTGAGGAGCAGAAGGCTGCATCCTCCTCCTACTCTGATCAT
GGGAACCTTGAGGAGGTGACTGATTCTGGGTACCAAGTCTCCCAGAGTCTGAGGGTGCCTCCTCT
TCCCTGACTGTCACCGACAGCACTCTGTGGAGCCAATCCGATGAGGGTCCAGCAGCAATGAAGAGGAGG
GGCCAAGCACCTCCCGGACCCAGCTCACCTGGAGTCCCTGTTCCGGGAAGCACTTGATGAGAAAGTGGC
TGAGTTAGTTCGTTTCCTGCTCCGAAAATCAAATTAAGGAGCCGGTCAAAAGGCAGAAATGCTTGAG
AGTGTCATCAAAAATTACAAGAACCCTTTCTGATATCTTCAGCAAAGCCTCTGAGTGCATGCAGGTGA
TCTTTGGCATTGATGTGAAGGAAGTGGACCCTGCCGGCCACTCCTACATCCTTGTACCTGCCTGGGCC
CTCCTATGATGGCCTGCTGGGTGATGATCAGAGTACGCCAAGACCGGCCTCCTGATAATCGTCCTGGGC
ATGATCTTAATGGAGGGCAGCCGCGCCCGGAGGAGGCAATCTGGGAAGCGTTGAGTGTGATGGGCTGT
ATGATGGGAGGGAGCACAGTGTCTATTGGAAGCTCAGGAAGCTGCTCACCAAGAGTGGGTGCAGGAGAA
CTACCTGGAGTACCGCCAGGCGCCCGGCAGTGTCTGTGCGCTACGAGTTCCTGTGGGGTCCAAGGGCC
CTTGCTGAAACCAGCTATGTGAAAGTCTGGAGCATGTGGTCAAGGTCATGCAAGAGTTCGCATTTCT
ACCCATCCCTGCATGAAGAGGCTTTGGGAGAGGAGAAAGGAGTT

ACGCGTACGCGGCCGCTCGAGCAGAAACTCATCTCAGAAGAGGATCTGGCAGCAAATGATATCCTGGATT
ACAAGGATGACGACGATAAGGTTTAA



[View online »](#)

Protein Sequence: >RC229878 representing NM_001166400
Red=Cloning site Green=Tags(s)

MLLGQKSQRYKAEGLQAQGEAPGLMDVQIPTAEEQKAASSSTLIMGTLEEVTDSGSPSPQSPGASS
 SLTVTDSLWSQSDGSSNNEEGPSTSPDPAHLESLFREALDEKVAELVRFLLRKYQIKEPVTKAEMLE
 SVIKNYKNHFPDIFSKASECMQVIFGIDVKEVDPAGHSYILVTCLGLSYDGLLGDDQSTPKTGLLIIVLG
 MILMEGSRAPPEEAIWEAL SVMGLYDGREHSVYWKLRKLLTQEWVQENYLEYRQAPGSDPVRYEFLWGPRA
 LAETSYVKVLEHVVRVNRVIRISYPSLHEEALGEEKGV

TRTRPLEQKLISEEDLAANDILDYKDDDDKV

Chromatograms: https://cdn.origene.com/chromatograms/ja1519_f06.zip

Restriction Sites: SgfI-MluI

Cloning Scheme:



ACCN: NM_001166400

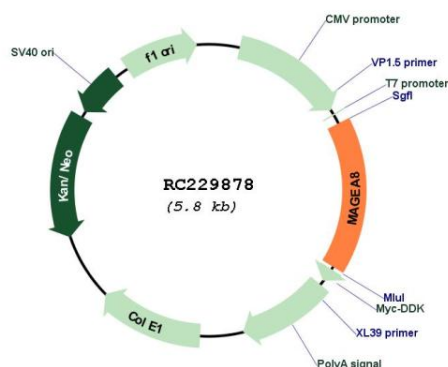
ORF Size: 954 bp

OTI Disclaimer: Due to the inherent nature of this plasmid, standard methods to replicate additional amounts of DNA in E. coli are highly likely to result in mutations and/or rearrangements. Therefore, OriGene does not guarantee the capability to replicate this plasmid DNA. Additional amounts of DNA can be purchased from OriGene with batch-specific, full-sequence verification at a reduced cost. Please contact our customer care team at custsupport@origene.com or by calling 301.340.3188 option 3 for pricing and delivery.

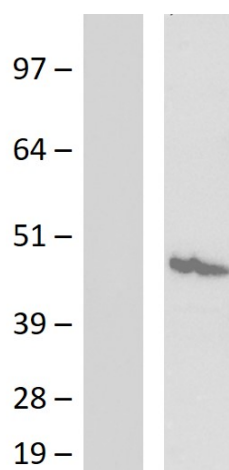
The molecular sequence of this clone aligns with the gene accession number as a point of reference only. However, individual transcript sequences of the same gene can differ through naturally occurring variations (e.g. polymorphisms), each with its own valid existence. This clone is substantially in agreement with the reference, but a complete review of all prevailing variants is recommended prior to use. [More info](#)

OTI Annotation:	This clone was engineered to express the complete ORF with an expression tag. Expression varies depending on the nature of the gene.
Components:	The ORF clone is ion-exchange column purified and shipped in a 2D barcoded Matrix tube containing 10ug of transfection-ready, dried plasmid DNA (reconstitute with 100 ul of water).
Reconstitution Method:	<ol style="list-style-type: none">1. Centrifuge at 5,000xg for 5min.2. Carefully open the tube and add 100ul of sterile water to dissolve the DNA.3. Close the tube and incubate for 10 minutes at room temperature.4. Briefly vortex the tube and then do a quick spin (less than 5000xg) to concentrate the liquid at the bottom.5. Store the suspended plasmid at -20°C. The DNA is stable for at least one year from date of shipping when stored at -20°C.
RefSeq:	<u>NM_001166400.1</u> , <u>NP_001159872.1</u>
RefSeq ORF:	957 bp
Locus ID:	4107
UniProt ID:	<u>P43361</u>
Cytogenetics:	Xq28
MW:	35.7 kDa
Gene Summary:	This gene is a member of the MAGEA gene family. The members of this family encode proteins with 50 to 80% sequence identity to each other. The promoters and first exons of the MAGEA genes show considerable variability, suggesting that the existence of this gene family enables the same function to be expressed under different transcriptional controls. The MAGEA genes are clustered at chromosomal location Xq28. They have been implicated in some hereditary disorders, such as dyskeratosis congenita. Multiple alternatively spliced variants, encoding the same protein, have been identified. [provided by RefSeq, Oct 2009]

Product images:



Circular map for RC229878



Western blot validation of overexpression lysate (Cat# [LY432878]) using anti-DDK antibody (Cat# [TA592569]). Left: Cell lysates from untransfected HEK293T cells; Right: Cell lysates from HEK293T cells transfected with RC229878 using transfection reagent PEI.