

## Product datasheet for RC229873

### MYD88 (NM\_001172567) Human Tagged ORF Clone

#### Product data:

Product Type:	Expression Plasmids
Product Name:	MYD88 (NM_001172567) Human Tagged ORF Clone
Tag:	Myc-DDK
Symbol:	MYD88
Synonyms:	IMD68; MYD88D
Mammalian Cell Selection:	Neomycin
Vector:	pCMV6-Entry (PS100001)
E. coli Selection:	Kanamycin (25 ug/mL)
ORF Nucleotide Sequence:	>RC229873 representing NM_001172567 Red=Cloning site Blue=ORF Green=Tags(s)

TTTTGTAATACGACTCACTATAGGGCGGCCGGAATTCGTCGACTGGATCCGGTACCGAGGAGATCTGCC  
GCC**CGATCGCC**

ATGCGACCCGACCGCTGAGGCTCCAGGACCGCCGCCATGGCTGCAGGAGGTCCCGCGCGGGTCTG  
CGGCCCGGTCTCCTCCACATCCTCCCTCCCTGGCTGCTCAACATGCGAGTGCGGCCCGCCTGTC  
TCTGTTCTTGAACGTGCGGACACAGGTGGCGCCGACTGGACCGCTGGCGGAGGAGATGGACTTTGAG  
TACTTGGAGATCCGGCAACTGGAGACACAAGCGGACCCCACTGGCAGGCTGCTGGACGCTGGCAGGGAC  
GCCCTGGCGCCTCTGTAGCCGACTGCTCGAGTGCTTACCAAGCTGGGCCGCGACGACGTGCTGCTGGA  
GCTGGGACCCAGCATTGAGGAGGATTGCCAAAAGTATATCTTGAAGCAGCAGCAGGAGGAGCTGAGAAG  
CCTTTACAGTGGCCGCTGTAGACAGCAGTGTCACCGGACAGCAGAGCTGGCGGGCATCACCACTTG  
ATGACCCCTGGGGCATAATGCCTGAGCGTTTCGATGCCTTCATCTGCTATTGCCCCAGCGACATCCAGTT  
TGTGCAGGAGATGATCCGGCAACTGGAACAGACAACTATCGACTGAAGTTGTGTGTCTGACCGCGAT  
GTCCTGCCTGGCACCTGTGTCTGGTCTATTGCTAGTGAGCTCATCGAAAAGAGGTTGGCTAGAAGCCAC  
GGGTGGTGCCCGGATGGTGGTGGTGTCTCTGATGATTACCTGCAGAGCAAGGAATGTGACTTCCA  
GACCAATTTGCACTCAGCCTCTCTCAGGTGCCATCAGAAGCGACTGATCCCCATCAAGTACAAGGCA  
ATGAAGAAAGAGTTCCCCAGCATCTGAGTTTCATCACTGTCTGGACTACACCAACCCCTGCACCAAT  
CTTGTTCTGGACTCGCCTTGCCAAGCCTTGTCCCTGCC

**ACGCGT**ACGCGGCCGCTCGAGCAGAACTCATCTCAGAAGAGGATCTGGCAGCAATGATATCCTGGATT  
ACAAGGATGACGACGATAAGGTTTAA



[View online »](#)

**Protein Sequence:** >RC229873 representing NM\_001172567  
Red=Cloning site Green=Tags(s)

MRPDRAEAPGPPAMAAGGPGAGSAAPVSSSTSLPLAALNMRVRRRLSLFLNVRTQVAADWTALAEEMDFE  
 YLEIRQLETQADPTGRLLDAWQGRPGASVGRLLLELLTKLGRDDVLELGPSTIEEDCQKYILKQQEAEK  
 PLQVAADVSSVPRTAELAGITTLDDPLGHMPERFDFAFICYCPSDIQFVQEMIRQLEQTNYRLKLCVSDRD  
 VLPGTCVWSIASELIEKRLARRRPRGGCRRMVVVVSDDYLSQKECDFQTKFALSLSPGAHQKRLIPIKYKA  
 MKKEFPSILRFITVCDYTNPCTKSWFWTRLAKALSLP

TRTRPLEQKLISEEDLAANDILDYKDDDDKV

**Chromatograms:** [https://cdn.origene.com/chromatograms/mk8051\\_d10.zip](https://cdn.origene.com/chromatograms/mk8051_d10.zip)

**Restriction Sites:** SgfI-MluI

**Cloning Scheme:**



**ACCN:** NM\_001172567

**ORF Size:** 951 bp

**OTI Disclaimer:** The molecular sequence of this clone aligns with the gene accession number as a point of reference only. However, individual transcript sequences of the same gene can differ through naturally occurring variations (e.g. polymorphisms), each with its own valid existence. This clone is substantially in agreement with the reference, but a complete review of all prevailing variants is recommended prior to use. [More info](#)

**OTI Annotation:** This clone was engineered to express the complete ORF with an expression tag. Expression varies depending on the nature of the gene.

**Components:** The ORF clone is ion-exchange column purified and shipped in a 2D barcoded Matrix tube containing 10ug of transfection-ready, dried plasmid DNA (reconstitute with 100 ul of water).

**Reconstitution Method:**

1. Centrifuge at 5,000xg for 5min.
2. Carefully open the tube and add 100ul of sterile water to dissolve the DNA.
3. Close the tube and incubate for 10 minutes at room temperature.
4. Briefly vortex the tube and then do a quick spin (less than 5000xg) to concentrate the liquid at the bottom.
5. Store the suspended plasmid at -20°C. The DNA is stable for at least one year from date of shipping when stored at -20°C.

**RefSeq:** [NM\\_001172567.1](#), [NP\\_001166038.1](#)

**RefSeq ORF:** 915 bp

**Locus ID:** 4615

**Cytogenetics:** 3p22.2

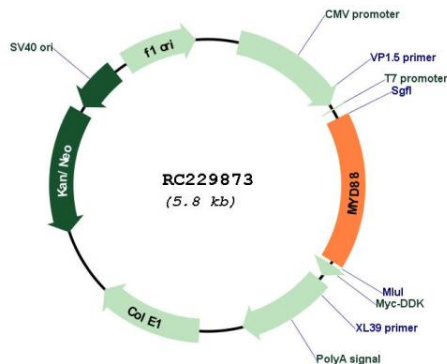
**Protein Families:** Druggable Genome

**Protein Pathways:** Apoptosis, Toll-like receptor signaling pathway

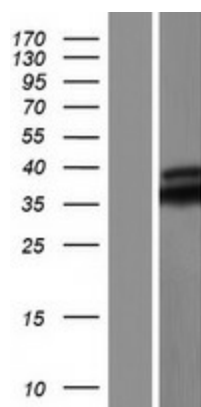
**MW:** 35.9 kDa

**Gene Summary:** This gene encodes a cytosolic adapter protein that plays a central role in the innate and adaptive immune response. This protein functions as an essential signal transducer in the interleukin-1 and Toll-like receptor signaling pathways. These pathways regulate that activation of numerous proinflammatory genes. The encoded protein consists of an N-terminal death domain and a C-terminal Toll-interleukin1 receptor domain. Patients with defects in this gene have an increased susceptibility to pyogenic bacterial infections. Alternate splicing results in multiple transcript variants. [provided by RefSeq, Feb 2010]

### Product images:



Circular map for RC229873



Western blot validation of overexpression lysate (Cat# [LY432873]) using anti-DDK antibody (Cat# [TA50011-100]). Left: Cell lysates from untransfected HEK293T cells; Right: Cell lysates from HEK293T cells transfected with RC229873 using transfection reagent MegaTran 2.0 (Cat# [TT210002]).