

Product datasheet for RC229869

C9orf86 (RABL6) (NM_001173989) Human Tagged ORF Clone

Product data:

Product Type:	Expression Plasmids
Product Name:	C9orf86 (RABL6) (NM_001173989) Human Tagged ORF Clone
Tag:	Myc-DDK
Symbol:	C9orf86
Synonyms:	C9orf86; PARF; pp8875; RBEL1
Mammalian Cell Selection:	Neomycin
Vector:	pCMV6-Entry (PS100001)
E. coli Selection:	Kanamycin (25 ug/mL)
ORF Nucleotide Sequence:	>RC229869 representing NM_001173989 Red=Cloning site Blue=ORF Green=Tags(s)

TTTTGTAATACGACTCACTATAGGGCGGCCGGAATTCGTCGACTGGATCCGGTACCGAGGAGATCTGCC
GCC**CGATCGCC**

ATGTTTTCCGCCCTGAAGAAGCTGGTGGGGTCCGACCAGGCCCGGGCCGGGACAAGAACATCCCCGCCG
GGCTGCAGTCCATGAACCAGGCGTTGCAGAGGCGCTTCGCCAAGGGGTGCAGTACAACATGAAGATAGT
GATCCGGGGAGACAGGAACACGGGCAAGACAGCGCTGTGGCACCCTGCAGGGCCGGCGTTCTGGAG
GAGTACATCCCCACAGGAGATCCAGGTCACCAGCATCCACTGGAGCTACAAGACCACGGATGACATCG
TGAAGTTGAAGTCTGGGATGTAGTAGACAAAGAAAATGCAAAAAGCGAGGCGACGGCTTAAAGATGGA
GAACGACCCCCAGGAGGCGGAGTCTGAAATGGCCCTGGATGCTGAGTTCCCTGGACGTGTACAAGAACTGC
AACGGGGTGGTCATGATGTTTCGACATTACCAAGCAGTGGACCTTCAATTACATTCTCCGGGAGCTTCCAA
AAGTGCCACCCACGTGCCAGTGTGCGTGTGGGAACTACCGGGACATGGGCGAGCACCCAGTCACTCT
GCCGGACGACGTGCGTGACTTCAATCGACAACTGGACAGACCTCCAGGTTCCCTACTTCCGCTATGCT
GAGTCTTCCATGAAGAACAGCTTCGGCCTAAAGTACCTTCATAAGTTCTTCAATATCCCATTTTGCAGC
TTCAGAAGGATGTCAGGCTTCCCAGGAAAGGGCTGTGCTGTCGTCCTGGTGTGAGAAGAAGTGAAGAT
GCCTGCAGGCTGGGACTGCTGCTGGGACGTTTGGGTTGGAAGGAAGCGGCAGTCAGACTTGTCTGTG
CCGGCACTGCTGGGAGGCCCTCCTTCTGCAGAGCCGTCCTCATCACTGGGTTGATTACTCCTTAG
AGAGTCCCCACTGCTCAGCTGCTCCATTCCC

ACGCGTACGCGGCCGCTCGAGCAGAAACTCATCTCAGAAGAGGATCTGGCAGCAAATGATATCCTGGATT
ACAAGGATGACGACGATAAGGTTTAA



[View online »](#)

Protein Sequence: >RC229869 representing NM_001173989
Red=Cloning site Green=Tags(s)

MFSALKKLVGSDQAPGRDKNIPAGLQSMNQALQRRFAKGVQYNMKIVIRGDRNTGKTALWHRLQGRPFVE
 EYIPTQEIQVTSIHWSYKTTDDIVKVEVWDVVDKKGCKKRGDGLKMPQEAASEMALDAEFLDVYKNC
 NGVVMFDITKQWTFNYILRELKPVHPVPCVLGNYRDMGEHRVILPDDVRDFIDNLDPRPPGSSYFRYA
 ESSMKNSFGLKYLHKFFNIPFLQLQKDVRLAQERGCVVLVSEEVMPAGWDCCWGRLGWKEGGSQTCPV
 PALLGRPLLPAEPSPHHWVDYSLESSPLLSCSIP

TRTRPLEQKLISEEDLAANDILDYKDDDDKV

Chromatograms: https://cdn.origene.com/chromatograms/mk8051_c04.zip

Restriction Sites: SgfI-MluI

Cloning Scheme:



ACCN: NM_001173989

ORF Size: 942 bp

OTI Disclaimer: The molecular sequence of this clone aligns with the gene accession number as a point of reference only. However, individual transcript sequences of the same gene can differ through naturally occurring variations (e.g. polymorphisms), each with its own valid existence. This clone is substantially in agreement with the reference, but a complete review of all prevailing variants is recommended prior to use. [More info](#)

OTI Annotation: This clone was engineered to express the complete ORF with an expression tag. Expression varies depending on the nature of the gene.

Components: The ORF clone is ion-exchange column purified and shipped in a 2D barcoded Matrix tube containing 10ug of transfection-ready, dried plasmid DNA (reconstitute with 100 ul of water).

Reconstitution Method:

1. Centrifuge at 5,000xg for 5min.
2. Carefully open the tube and add 100ul of sterile water to dissolve the DNA.
3. Close the tube and incubate for 10 minutes at room temperature.
4. Briefly vortex the tube and then do a quick spin (less than 5000xg) to concentrate the liquid at the bottom.
5. Store the suspended plasmid at -20°C. The DNA is stable for at least one year from date of shipping when stored at -20°C.

RefSeq: [NM_001173989.3](#)

RefSeq ORF: 945 bp

Locus ID: 55684

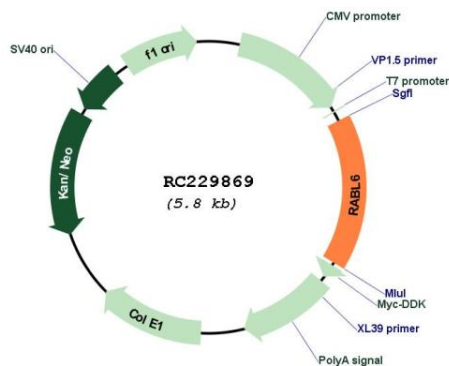
UniProt ID: [Q3YEC7](#)

Cytogenetics: 9q34.3

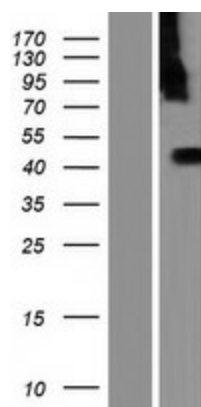
MW: 36.3 kDa

Gene Summary: This gene encodes a member of the Ras superfamily of small GTPases. The encoded protein binds to both GTP and GDP and may play a role in cell growth and survival. Overexpression of this gene may play a role in breast cancer tumorigenesis, and pseudogenes of this gene are located on the long arm of chromosome 2 and the short arm of chromosome 18. Alternatively spliced transcript variants encoding multiple isoforms have been observed for this gene. [provided by RefSeq, Dec 2011]

Product images:



Circular map for RC229869



Western blot validation of overexpression lysate (Cat# [LY432869]) using anti-DDK antibody (Cat# [TA50011-100]). Left: Cell lysates from untransfected HEK293T cells; Right: Cell lysates from HEK293T cells transfected with RC229869 using transfection reagent MegaTran 2.0 (Cat# [TT210002]).