

Product datasheet for **RC229867**

MAGEA12 (NM_001166387) Human Tagged ORF Clone

Product data:

Product Type:	Expression Plasmids
Product Name:	MAGEA12 (NM_001166387) Human Tagged ORF Clone
Tag:	Myc-DDK
Symbol:	MAGEA12
Synonyms:	CT1.12; MAGE12
Mammalian Cell Selection:	Neomycin
Vector:	pCMV6-Entry (PS100001)
E. coli Selection:	Kanamycin (25 ug/mL)
ORF Nucleotide Sequence:	>RC229867 representing NM_001166387 Red=Cloning site Blue=ORF Green=Tags(s)

TTTTGTAATACGACTCACTATAGGGCGGCCGGAATTCGTCGACTGGATCCGGTACCGAGGAGATCTGCC
GCC**CGATCGCC**

ATGCCACTTGAGCAGAGGAGTCAGCACTGCAAGCCTGAGGAAGGCCTTGAGGCCAAGGAGAGGCCCTGG
GCTTGGTGGGTGCGCAGGCTCCTGCTACTGAGGAGCAGGAGACTGCCTCCTCCTCTACTCTAGTGGA
AGTCACCCTGCGGGAGGTGCCTGCTGCCGAGTCACCAAGTCTCCACAGTCTCAGGGAGCCTCCACC
CTCCCCACTACCATCACTATACTCTCTGGAGTCAATCCGATGAGGGCTCCAGCAACGAAGAACAGGAAG
GGCCAAGCACCTTCTGACCTGGAGACGAGCTTCCAAGTAGCACTCAGTAGGAAGATGGCTGAGTTGGT
TCAATTTCTGCTCCTCAAGTATCGAGCCAGGGAGCCATTCACAAAGGCAGAAATGCTGGGGAGTGTCATC
AGAAATTTCCAGGACTTCTTCTGTGATCTTCAGCAAAGCCTCCGAGTACTTGCAGCTGGTCTTTGGCA
TCGAGGTGGTGAAGTGGTCCGCATCGGCCACTTGACATCCTTGTACCTGCCTGGGCCTCTCCTACGA
TGGCCTGCTGGGCGACAATCAGATCGTGCCCAAGACAGGCCTCCTGATAATCGTCTGGCCATAATCGCA
AAAGAGGGCGACTGTGCCCTGAGGAGAAAATCTGGGAGGAGCTGAGTGTGTTGGAGGCATCTGATGGGA
GGGAGGACAGTGTCTTTGCGCATCCAGGAAGCTGCTCACCAAGATTTGGTGCAGGAAAACCTGGA
GTACCGGCAGGTCCCGGCAGTATCCTGCATGCTACGAGTTCCTGTGGGGTCCAAGGGCCCTCGTTGAA
ACCAGCTATGTGAAAGTCTGCACCATTTGCTAAAGATCAGTGGAGGACCTCACATTTCTACCCACCC
TGCATGAATGGCTTTTAGAGAGGGGAAGAG

ACGCGTACGCGGCCGCTCGAGCAGAAACTCATCTCAGAAGAGGATCTGGCAGCAAATGATATCCTGGATT
ACAAGGATGACGACGATAAGGTTTAA



[View online »](#)

Protein Sequence: >RC229867 representing NM_001166387
Red=Cloning site Green=Tags(s)

MPLEQRSQHCKPEEGLEAQGEALGLVGAQAPATEEQETASSSSTLVEVTLREVPAAESPSPHPSPQGAST
 LPTTINYTLWSQSDGSSNEEQEGPSTFPDLET SFQVALSRKMAELVHFLLLKYRAREPFTKAEMLGSVI
 RNFQDFFPVIFSKASEYLQLVFGIEVVEVVRIGHLYILVTCLGLSYDGLLDGNQIVPKTGLLIIVLAIIA
 KEGDCAPEEKIWEELSVLEASDGREDSVFAHPRKLLTQDLVQENYLEYRQVPGSDPACYEFLWGPRALVE
 TSYVKVLHLLKISGGPHISYPPLHEWAFREGEE

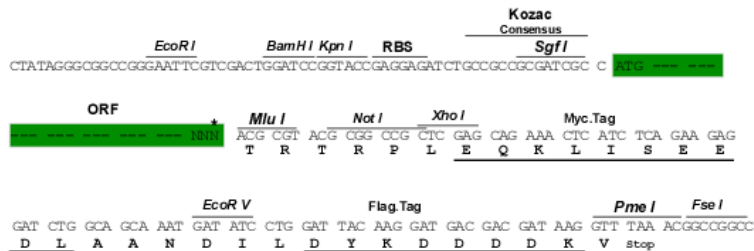
TRTRPLEQKLISEEDLAANDILDYKDDDDKV

Chromatograms: https://cdn.origene.com/chromatograms/ja1511_e04.zip

Restriction Sites: SgfI-MluI

Cloning Scheme:

Cloning sites used for ORF Shuttling:



* The last codon before the Stop codon of the ORF

ACCN: NM_001166387

ORF Size: 942 bp

OTI Disclaimer: The molecular sequence of this clone aligns with the gene accession number as a point of reference only. However, individual transcript sequences of the same gene can differ through naturally occurring variations (e.g. polymorphisms), each with its own valid existence. This clone is substantially in agreement with the reference, but a complete review of all prevailing variants is recommended prior to use. [More info](#)

OTI Annotation: This clone was engineered to express the complete ORF with an expression tag. Expression varies depending on the nature of the gene.

Components: The ORF clone is ion-exchange column purified and shipped in a 2D barcoded Matrix tube containing 10ug of transfection-ready, dried plasmid DNA (reconstitute with 100 ul of water).

Reconstitution Method:

1. Centrifuge at 5,000xg for 5min.
2. Carefully open the tube and add 100ul of sterile water to dissolve the DNA.
3. Close the tube and incubate for 10 minutes at room temperature.
4. Briefly vortex the tube and then do a quick spin (less than 5000xg) to concentrate the liquid at the bottom.
5. Store the suspended plasmid at -20°C. The DNA is stable for at least one year from date of shipping when stored at -20°C.

RefSeq: [NM_001166387.4](#)

RefSeq ORF: 945 bp

Locus ID: 4111

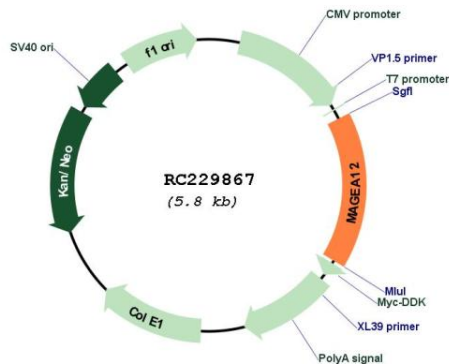
UniProt ID: [P43365](#)

Cytogenetics: Xq28

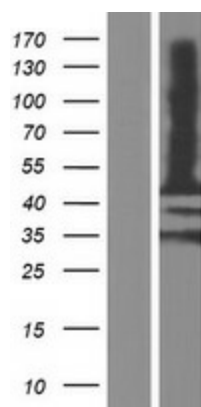
MW: 35.3 kDa

Gene Summary: This gene is closely related to several other genes clustered on chromosome X. These genes may be overexpressed in tumors. Multiple alternatively spliced variants encoding the same protein have been identified. [provided by RefSeq, Jun 2014]

Product images:



Circular map for RC229867



Western blot validation of overexpression lysate (Cat# [LY432867]) using anti-DDK antibody (Cat# [TA50011-100]). Left: Cell lysates from untransfected HEK293T cells; Right: Cell lysates from HEK293T cells transfected with RC229867 using transfection reagent MegaTran 2.0 (Cat# [TT210002]).