

Product datasheet for RC229865

ZFYVE27 (NM_001174121) Human Tagged ORF Clone

Product data:

Product Type:	Expression Plasmids
Product Name:	ZFYVE27 (NM_001174121) Human Tagged ORF Clone
Tag:	Myc-DDK
Symbol:	ZFYVE27
Synonyms:	PROTRUDIN; SPG33
Mammalian Cell Selection:	Neomycin
Vector:	pCMV6-Entry (PS100001)
E. coli Selection:	Kanamycin (25 ug/mL)
ORF Nucleotide Sequence:	>RC229865 representing NM_001174121 Red=Cloning site Blue=ORF Green=Tags(s)

TTTTGTAATACGACTCACTATAGGGCGCCGGGAATTCGTCGACTGGATCCGGTACCGAGGAGATCTGCC
GCC**CGATCGCC**

ATGATTTTCAGTGCCTGCTGGGCTACCTTCAGGAGGTTTCCCGGGCACGGCTGCCTGATTCCGAGC
TGATGCGGAGGAAGTATCATAGCGTGAGGCAGGAGGACCTGCAGAGAGGTCGCTGTCTCGTCCCGAGGC
CGTGGCTGAGGTGAAGAGCTTCTTGATCCAGCTGGAGGCCTTCTGAGCCGCCTGTGCTGCACATGTGAA
GCCGCCTACCGCGTGTGCTGACTGGGAGAACCCCGTCTGTCTCACAGTTCTATGGGGCTCTTCTGGCA
CAGTCTGCATGCTGATTTGCTGCCACTCTGCTGGGTTCTCACCTTTTAAACAGCACGCTCTTTCTGGG
GAATGTGGAGTTCTTCCGAGTTGTGTCTGAGTACAGGGCATCTCTGCAGCAGAGGATGAACCCAAAGCAG
GAAGAGCATGCCTTTGAGAGTCTCCACCACCAGATGTTGGGGGAAGGATGGTCTGATGGACAGCACGC
CTGCCCTCACACCCACGGAGAGTCTCTTCCCAGGACCTCACACCGGGCAGCGTGGAGGAGGCTGAGGA
GGCTGAGCCAGATGAAGAGTTTAAAGATGCGATTGAGGAGGATGATGAGGGCGCCCCGTGCCAGCAGAG
GATGAGCTGGCCCTGCAGGACAACGGTTCTGAGCAAGAATGAGGTGCTGCGCAGCAAGGTGTCTCGGC
TCACGGAGCGGCTCCGCAAGCGCTACCCACCAACAACCTCGGGAAGTGCACGGGCTGCTCGGCCACCTT
CTCAGTGTGAAGAAGAGCGGAGCTGCAGTAATTGTGAAACAGCTTCTGCTCTCGATGCTGCTCTCTT
AAGGTGCCCAAGTCTCCATGGGGCCACAGCCCTGAAGCCAGAGGGAGACTGTGTTGTGTGTCCT
CGTGTAACCAGACCTTGAGCAAG

ACGCGTACGCGGCCGCTCGAGCAGAAACTCATCTCAGAAGAGGATCTGGCAGCAAATGATATCCTGGATT
ACAAGGATGACGACGATAAGGTTTAA



[View online »](#)

Protein Sequence: >RC229865 representing NM_001174121
Red=Cloning site Green=Tags(s)

MISVPALLGYLQEVCRARLPDSELMRRKYHSVRQEDLQGRLSRPEAVAEVKSFLIQLEAFLSRLCCTCE
 AAYRVLHWENPVVSSQFYGALLGTVCMLYLLPLCWVLTLNNTLFLGNVEFFRVVSEYRASLQQRMPKQ
 EEHAFESPPPPDVGGKDLMDSTPALTPTESLSSQDLTPGSVEEAEAEAPDEEFKDAIEEDEGAPCPAE
 DELALQDNGFLSKNEVLRSKVSRRLTERLRKRYPTNNGNCTGCSATF SVLKKRRSCSNCGNSFCSRCCSF
 KVPKSSMGATAPEAQRET VFCASCNQTL SK

TRTRPLEQKLISEEDLAANDILDYKDDDDKV

Chromatograms: https://cdn.origene.com/chromatograms/mk8051_b01.zip

Restriction Sites: SgfI-MluI

Cloning Scheme:

Cloning sites used for ORF Shuttling:



* The last codon before the Stop codon of the ORF

ACCN: NM_001174121

ORF Size: 933 bp

OTI Disclaimer: The molecular sequence of this clone aligns with the gene accession number as a point of reference only. However, individual transcript sequences of the same gene can differ through naturally occurring variations (e.g. polymorphisms), each with its own valid existence. This clone is substantially in agreement with the reference, but a complete review of all prevailing variants is recommended prior to use. [More info](#)

OTI Annotation: This clone was engineered to express the complete ORF with an expression tag. Expression varies depending on the nature of the gene.

Components: The ORF clone is ion-exchange column purified and shipped in a 2D barcoded Matrix tube containing 10ug of transfection-ready, dried plasmid DNA (reconstitute with 100 ul of water).

Reconstitution Method:

1. Centrifuge at 5,000xg for 5min.
2. Carefully open the tube and add 100ul of sterile water to dissolve the DNA.
3. Close the tube and incubate for 10 minutes at room temperature.
4. Briefly vortex the tube and then do a quick spin (less than 5000xg) to concentrate the liquid at the bottom.
5. Store the suspended plasmid at -20°C. The DNA is stable for at least one year from date of shipping when stored at -20°C.

RefSeq: [NM_001174121.1](#), [NP_001167592.1](#)

RefSeq ORF: 936 bp

Locus ID: 118813

UniProt ID: [Q5T4F4](#)

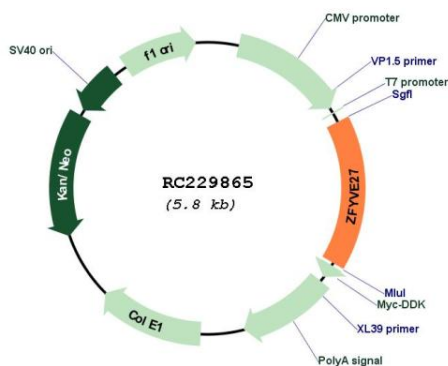
Cytogenetics: 10q24.2

Protein Families: Transmembrane

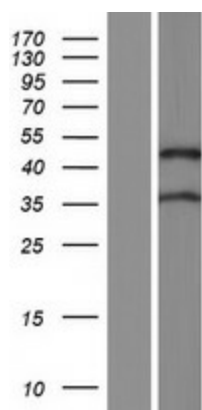
MW: 35.1 kDa

Gene Summary: This gene encodes a protein with several transmembrane domains, a Rab11-binding domain and a lipid-binding FYVE finger domain. The encoded protein appears to promote neurite formation. A mutation in this gene has been reported to be associated with hereditary spastic paraplegia, however the pathogenicity of the mutation, which may simply represent a polymorphism, is unclear. [provided by RefSeq, Mar 2010]

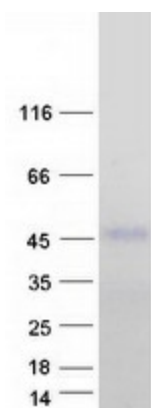
Product images:



Circular map for RC229865



Western blot validation of overexpression lysate (Cat# [LY432865]) using anti-DDK antibody (Cat# [TA50011-100]). Left: Cell lysates from untransfected HEK293T cells; Right: Cell lysates from HEK293T cells transfected with RC229865 using transfection reagent MegaTran 2.0 (Cat# [TT210002]).



Coomassie blue staining of purified ZFYVE27 protein (Cat# [TP329865]). The protein was produced from HEK293T cells transfected with ZFYVE27 cDNA clone (Cat# RC229865) using MegaTran 2.0 (Cat# [TT210002]).