

Product datasheet for **RC229858**

CLM 9 (CD300LG) (NM_001168322) Human Tagged ORF Clone

Product data:

Product Type: Expression Plasmids
Product Name: CLM 9 (CD300LG) (NM_001168322) Human Tagged ORF Clone
Tag: Myc-DDK
Symbol: CLM 9
Synonyms: CLM-9; CLM9; NEPMUCIN; TREM-4; TREM4
Mammalian Cell Selection: Neomycin
Vector: pCMV6-Entry (PS100001)
E. coli Selection: Kanamycin (25 ug/mL)
ORF Nucleotide Sequence: >RC229858 representing NM_001168322
 Red=Cloning site Blue=ORF Green=Tags(s)

TTTTGTAATACGACTCACTATAGGGCGGCCGGAATTCGTCGACTGGATCCGGTACCGAGGAGATCTGCC
 GCC**CGATCGCC**

ATGCGGCTTCTGGTCTGCTATGGGGTTGCCTGCTGCTCCAGGTTATGAAGCCCTGGAGGGCCAGAGG
 AAATCAGCGGGTTCGAAGGGGACACTGTGTCCCTGCAGTGCACCTACAGGGAAGAGCTGAGGGACCACCG
 GAAGTACTGGTGCAGGAAGGGTGGGATCCTTCTCTCGCTGCTCTGGCACCATCTATGCAGAAGAAGAA
 GGCCAGGAGACAATGAAGGGCAGGGTGTCCATCCGTGACAGCCGCCAGGAGCTCTCGCTCATTGTGACCC
 TGTGGAACCTCACCTGCAAGACGCTGGGGAGTACTGGTGTGGGGTCGAAAACGGGGCCCCGATGAGTC
 TTTACTGATCTCTGTTTCGCTTTCCAGGACCTGCTGTCTCCCTCCCCTTCTCCACCTTCCAGCCT
 CTGGCTACAACACGCCTGCAGCCCAAGGCAAAAGCTCAGCAAACCCAGCCCCAGGATTGACTTCTCCTG
 GGCTTACCCGGCAGCCACCACAGCCAAGCAGGGGAAGACAGGGGCTGAGGCCCTCCATTGCCAGGGAC
 TTCCCAGTACGGGCACGAAAGGACTTCTCAGTACACAGGAACCTCTCCTCACCCAGCGACCTCTCCTCT
 GCAGGGAGCTCCCGCCCCCATGCAGCTGGACTCCACCTCAGCAGAGGACACCAGTCCAGCTCTCAGCA
 GTGGCAGCTCTAAGCCCAGGGTGTCCATCCCGATGGTCCGATACTGGCCCCAGTCTGGTGTGCTGAG
 CCTTCTGTGAGCCGAGGCTGATCGCCTTCTGCAGCCACCTGCTCCTGTGGAGAAGGAAGCTCAACAG
 GCCACGGAGACACAGAGGAACGAGAAGTCTGCCTCTCACGCTTGAACCTCCTGATGTTTTCTCTGAGCC
 TGCCCTTGCTC

ACGCGTACGCGGCCGCTCGAGCAGAAACTCATCTCAGAAGAGGATCTGGCAGCAAATGATATCCTGGATT
 ACAAGGATGACGACGATAAGGTTTAA



[View online »](#)

Protein Sequence: >RC229858 representing NM_001168322
Red=Cloning site Green=Tags(s)

MRLLVLLWGCLLLPGYEALEGPPEISGFEGD TVSLQCTYREELRDHRKYWCRKGGILFRCSTIYAE
 EQETMKGRVSI RDSRQELSLIVTLWNLTLQDAGEYWCVEKRGPD ELLISL FVFPGCCPPSPSPTFQP
 LATTRLQPKAKAQQTQPPGLTSPGLYPAATTAKQKGTGAEAPPLPGTSQYGHERTSQYTGTS
 PHPATSPAGSSRPPMQLDSTSAEDTSPALSSGSSKPRVSI PMVRILAPVLLVLLSLLSAAGLIAFC
 SHLLLWRKEAQQATETQRNEKFCLSRLNSLMFSLSLPWL

TRTRPLEQKLISEEDLAANDILDYKDDDDKV

Chromatograms: https://cdn.origene.com/chromatograms/mk8051_h05.zip

Restriction Sites: SgfI-MluI

Cloning Scheme:



ACCN: NM_001168322

ORF Size: 921 bp

OTI Disclaimer: The molecular sequence of this clone aligns with the gene accession number as a point of reference only. However, individual transcript sequences of the same gene can differ through naturally occurring variations (e.g. polymorphisms), each with its own valid existence. This clone is substantially in agreement with the reference, but a complete review of all prevailing variants is recommended prior to use. [More info](#)

OTI Annotation: This clone was engineered to express the complete ORF with an expression tag. Expression varies depending on the nature of the gene.

Components: The ORF clone is ion-exchange column purified and shipped in a 2D barcoded Matrix tube containing 10ug of transfection-ready, dried plasmid DNA (reconstitute with 100 ul of water).

Reconstitution Method:

1. Centrifuge at 5,000xg for 5min.
2. Carefully open the tube and add 100ul of sterile water to dissolve the DNA.
3. Close the tube and incubate for 10 minutes at room temperature.
4. Briefly vortex the tube and then do a quick spin (less than 5000xg) to concentrate the liquid at the bottom.
5. Store the suspended plasmid at -20°C. The DNA is stable for at least one year from date of shipping when stored at -20°C.

RefSeq: [NM_001168322.2](#)

RefSeq ORF: 924 bp

Locus ID: 146894

UniProt ID: [Q6UXG3](#)

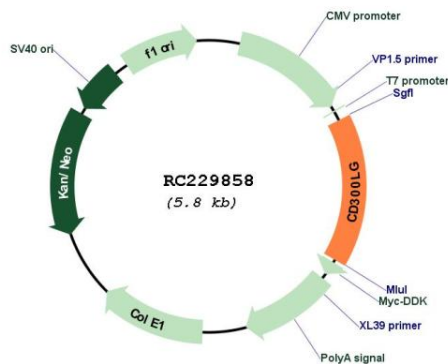
Cytogenetics: 17q21.31

Protein Families: Druggable Genome, Transmembrane

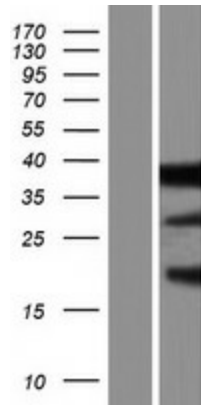
MW: 34 kDa

Gene Summary: Members of the CD300 (see MIM 606786)-like (CD300L) family, such as CD300LG, are widely expressed on hematopoietic cells. All CD300L proteins are type I cell surface glycoproteins that contain a single immunoglobulin (Ig) V-like domain (Takatsu et al., 2006 [PubMed 16876123]).[supplied by OMIM, Mar 2008]

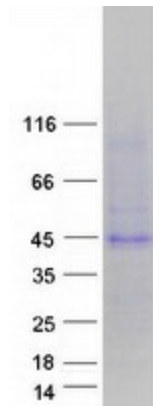
Product images:



Circular map for RC229858



Western blot validation of overexpression lysate (Cat# [LY432858]) using anti-DDK antibody (Cat# [TA50011-100]). Left: Cell lysates from untransfected HEK293T cells; Right: Cell lysates from HEK293T cells transfected with RC229858 using transfection reagent MegaTran 2.0 (Cat# [TT210002]).



Coomassie blue staining of purified CD300LG protein (Cat# [TP329858]). The protein was produced from HEK293T cells transfected with CD300LG cDNA clone (Cat# RC229858) using MegaTran 2.0 (Cat# [TT210002]).