

## Product datasheet for **RC229851**

### ARMCX6 (NM\_001184768) Human Tagged ORF Clone

#### Product data:

Product Type:	Expression Plasmids
Product Name:	ARMCX6 (NM_001184768) Human Tagged ORF Clone
Tag:	Myc-DDK
Symbol:	ARMCX6
Synonyms:	GASP10
Mammalian Cell Selection:	Neomycin
Vector:	pCMV6-Entry (PS100001)
E. coli Selection:	Kanamycin (25 ug/mL)
ORF Nucleotide Sequence:	>RC229851 representing NM_001184768 Red=Cloning site Blue=ORF Green=Tags(s)

TTTTGTAATACGACTCACTATAGGGCGGCCGGAATTCGTCGACTGGATCCGGTACCGAGGAGATCTGCC  
GCC**CGGATCGCC**

ATGGGCCGGGCTCGGGAAGTGGGTTGGATGGCGGCAGGACTGATGATTGGGGCTGGTGCCTGCTACTGCG  
TTTACAACTGACCATAGGAAGAGATGACAGTGAGAAGCTGGAGGAGGAGGGGAAGAGGAGTGGGACGA  
TGACCAGGAGCTGGATGAGGAGGAGCCTGATATTTGGTTGATTTGAACTATGGCTCGGCCCTGGACT  
GAGGATGGGATTGGACTGAACCTGGGGCCCCAGGTGGCACTGAGGACAGGCCCTCAGGGGAGGCAAGG  
CCAACCGAGCACCCAATAAAACAGCGGCCATCCCCTATGAACATAAAAATACTTGGAGTGCTCAAAA  
TTGTAATAATGGCAGTTGTGTTCTGGACCTCTCCAAGTGTCTTTTCATTACAGGAAAAGTGTGTTGGCC  
GAGCCCAAGGATGCGGGCTTTCCATTTAGCCAGGATATCAATAGCCATTTGGCCAGCCTCTCAATGGCTA  
GAAACACGAGCCCCACTCCAGACCCCACTGTTAGAGAGGCTTTGTGTGCCCCGGATAACTTAAATGCGAG  
TATTGAAAGTCAGGGCCAGATTAAGATGTACATCAATGAAGTGTGTGGGAGACTGTGTCACGTTGCTGC  
AACTCATTTCTGCAGCAGGCCGGATTAATTTGTTAATAAGCATGACAGTTATTAATAACATGCTTGCCA  
AGTCCGCTTCAGACTTGAAGTTTCCTTTGATATCAGAGGGAAGTGGATGTGCTAAGGTTCCAGTTTTGAA  
ACCGCTGATGGGTTTGTCTGAAAAGCCAGTCTTGGCGGGGAGTTAGTCGGTGCCAGATGCTCTTCTCA  
TTCATGTCCCTCTTATCAGAAATGGAACAGAGAGATTCTCTGGAACCCCTGCCCA

**ACGCGT**ACGCGGCCGCTCGAGCAGAAACTCATCTCAGAAGAGGATCTGGCAGCAAATGATATCCTGGATT  
ACAAGGATGACGACGATAAGGTTTAA



[View online »](#)

**Protein Sequence:** >RC229851 representing NM\_001184768  
Red=Cloning site Green=Tags(s)

MGRAREVGMMAAGLMIGAGACYCVYKLTIGRDDSEKLEEEEGEEWDDQELDEEEDIWDFETMARPWT  
 EDGDWTEPGAPGGTEDRPSGGGKANRAHPKQRPFPYEHKNTWSAQNCKNGSCVLDL SKCLFIQGKLLFA  
 EPKDAGFPFSQDINSHLASL SMARNTSPTDPTVREALCAPDNLNASIESQGQIKMYINEVCRETVSRCC  
 NSFLLQQAGLNLLISMTVINMLAKSASDLKFLISEGSGCAKVQVLKPLMGLSEKPVLAGELVGAQMLFS  
 FMSLFIIRNGNREILLETPAP

TRTRPLEQKLISEEDLAANDILDYKDDDDKV

**Chromatograms:** [https://cdn.origene.com/chromatograms/ja1529\\_g11.zip](https://cdn.origene.com/chromatograms/ja1529_g11.zip)

**Restriction Sites:** SgfI-MluI

**Cloning Scheme:**



**ACCN:** NM\_001184768

**ORF Size:** 900 bp

**OTI Disclaimer:** The molecular sequence of this clone aligns with the gene accession number as a point of reference only. However, individual transcript sequences of the same gene can differ through naturally occurring variations (e.g. polymorphisms), each with its own valid existence. This clone is substantially in agreement with the reference, but a complete review of all prevailing variants is recommended prior to use. [More info](#)

**OTI Annotation:** This clone was engineered to express the complete ORF with an expression tag. Expression varies depending on the nature of the gene.

**Components:** The ORF clone is ion-exchange column purified and shipped in a 2D barcoded Matrix tube containing 10ug of transfection-ready, dried plasmid DNA (reconstitute with 100 ul of water).

**Reconstitution Method:**

1. Centrifuge at 5,000xg for 5min.
2. Carefully open the tube and add 100ul of sterile water to dissolve the DNA.
3. Close the tube and incubate for 10 minutes at room temperature.
4. Briefly vortex the tube and then do a quick spin (less than 5000xg) to concentrate the liquid at the bottom.
5. Store the suspended plasmid at -20°C. The DNA is stable for at least one year from date of shipping when stored at -20°C.

**RefSeq:** [NM\\_001184768.1](#), [NP\\_001171697.1](#)

**RefSeq ORF:** 903 bp

**Locus ID:** 54470

**UniProt ID:** [Q7L4S7](#)

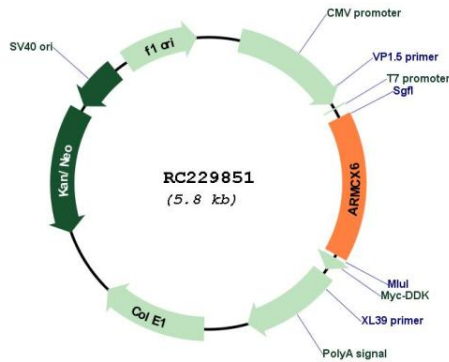
**Cytogenetics:** Xq22.1

**Protein Families:** Transmembrane

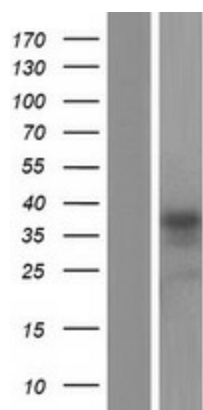
**MW:** 33.5 kDa

**Gene Summary:** May regulate the dynamics and distribution of mitochondria in neural cells.[UniProtKB/Swiss-Prot Function]

**Product images:**



Circular map for RC229851



Western blot validation of overexpression lysate (Cat# [LY432851]) using anti-DDK antibody (Cat# [TA50011-100]). Left: Cell lysates from untransfected HEK293T cells; Right: Cell lysates from HEK293T cells transfected with RC229851 using transfection reagent MegaTran 2.0 (Cat# [TT210002]).