

## Product datasheet for **RC229842**

### **MBNL3 (NM\_001170702) Human Tagged ORF Clone**

#### Product data:

Product Type:	Expression Plasmids
Product Name:	MBNL3 (NM_001170702) Human Tagged ORF Clone
Tag:	Myc-DDK
Symbol:	MBNL3
Synonyms:	CHCR; MBLX; MBLX39; MBXL
Mammalian Cell Selection:	Neomycin
Vector:	pCMV6-Entry (PS100001)
E. coli Selection:	Kanamycin (25 ug/mL)
ORF Nucleotide Sequence:	>RC229842 representing NM_001170702 Red=Cloning site Blue=ORF Green=Tags(s)

TTTTGTAATACGACTCACTATAGGGCGGCCGGAATTCGTCGACTGGATCCGGTACCGAGGAGATCTGCC  
GCC**CGATCGCC**

ATGGAGAGGGCTTCTAAGAATCTTAAGGGTCGGTGTACCCGAGAGAACTGCAAGTACCTTCACCCTCCTC  
CACACTTAAAAACGCAGCTGGAGATTAATGGGCGGAACAATCTGATTCAACAGAAGACTGCCGCAGCCAT  
GTTGCGCCAGCAGATGCAGCTTATGCTCCAAAACGCTCAAATGTCATCACTTGGTTCTTTTCCTATGACT  
CCATCAATTCAGCTAATCCTCCATGGCTTTCAATCCTTACATACCACATCCTGGGATGGGCCTCGTTC  
CTGCAGAACTTGTACAAATACACCTGTTCTGATTCTGGAAACCCACCTCTTGAATGCCAGGAGCTGT  
TGGCCCAAACCTGATGCGTTTACATAAACTGGAGGTTTGGCGAGAATTCAGCGTGGAAATGTACCCGT  
GGGAGAAATGATTGCCGCTATGCTCACCTACTGATGCTTCCATGATTGAAGCGAGTGATAATACTGTGA  
CAATCTGCATGGATTACATCAAAGGTCGATGCTCGCGGGAGAAATGCAAGTACTTTCATCCTCCTGCACA  
CTTGCAAGCCAGACTCAAGGCAGCTCATCATCAGATGAACCATTAGCTGCCTCTGCCATGGCCCTGCAG  
CCTGGTACACTGCAACTGATACCAAGAGATCAGCACTGGAAAAGCCCAATGGTGCCACCCCGGTCTTTA  
ATCCCCTGTTTTCCACTGCCAACAGGCTCTGACTAACCTGCAGCTCCCACAGCCGGCATTATCCCTGC  
AGTGCCCATGATGCACGGTGCTACACCTACCCTGTGTCTGCAGCAACAACACCTGCCACCAGCGTTCCG  
TTCGCTGCACCAACTACAGGCAATCAGCTGAAATTC

**ACGCGT**ACGCGGCCGCTCGAGCAGAAACTCATCTCAGAAGAGGATCTGGCAGCAAATGATATCCTGGATT  
ACAAGGATGACGACGATAAGGTTTAA



[View online »](#)

**Protein Sequence:** >RC229842 representing NM\_001170702  
Red=Cloning site Green=Tags(s)

MERASKNLKGRCTRENCKYLHPPPHLKTQLEINGRNNLIQQKTAAMFAQQMQLMLQNAQMSSLGSPFMT  
 PSIPANPPMAFNPIPHPGMGLVPAELVPNTPVLIPGNPPLAMPGAVGPKLMRSDKLEVCREFQRGNCTR  
 GENDCRYAHPTDASMIEASDNTVTICMDYIKGRCSREKCKYFHPPAHLQARLKAHHQMNHSAASAMALQ  
 PGTLLQIPKRSALEKPNGATPVFNPTVFHCQQALTNLQLPQPAFIPAVPMMHGATPTTVSAATTPATSV  
 FAAPTTGNQLKF

TRTRPLEQKLISEEDLAANDILDYKDDDDKV

**Chromatograms:** [https://cdn.origene.com/chromatograms/mk8050\\_a04.zip](https://cdn.origene.com/chromatograms/mk8050_a04.zip)

**Restriction Sites:** SgfI-MluI

**Cloning Scheme:**



**ACCN:** NM\_001170702

**ORF Size:** 876 bp

**OTI Disclaimer:** The molecular sequence of this clone aligns with the gene accession number as a point of reference only. However, individual transcript sequences of the same gene can differ through naturally occurring variations (e.g. polymorphisms), each with its own valid existence. This clone is substantially in agreement with the reference, but a complete review of all prevailing variants is recommended prior to use. [More info](#)

**OTI Annotation:** This clone was engineered to express the complete ORF with an expression tag. Expression varies depending on the nature of the gene.

**Components:** The ORF clone is ion-exchange column purified and shipped in a 2D barcoded Matrix tube containing 10ug of transfection-ready, dried plasmid DNA (reconstitute with 100 ul of water).

**Reconstitution Method:**

1. Centrifuge at 5,000xg for 5min.
2. Carefully open the tube and add 100ul of sterile water to dissolve the DNA.
3. Close the tube and incubate for 10 minutes at room temperature.
4. Briefly vortex the tube and then do a quick spin (less than 5000xg) to concentrate the liquid at the bottom.
5. Store the suspended plasmid at -20°C. The DNA is stable for at least one year from date of shipping when stored at -20°C.

**RefSeq:** [NM\\_001170702.1](#), [NP\\_001164173.1](#)

**RefSeq ORF:** 741 bp

**Locus ID:** 55796

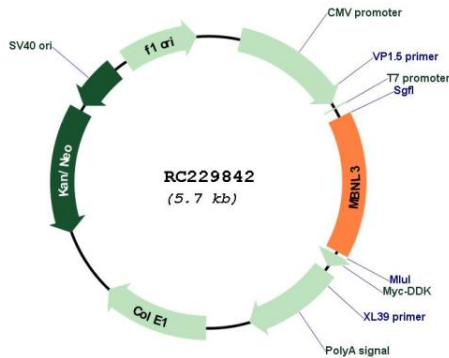
**UniProt ID:** [Q9NUK0](#)

**Cytogenetics:** Xq26.2

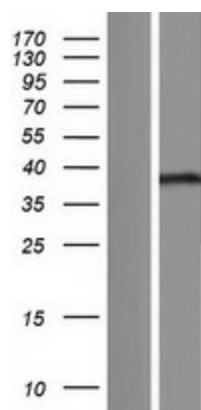
**MW:** 32.2 kDa

**Gene Summary:** This gene encodes a member of the muscleblind-like family of proteins. The encoded protein may function in regulation of alternative splicing and may play a role in the pathophysiology of myotonic dystrophy. Alternatively spliced transcript variants have been described. [provided by RefSeq, Dec 2009]

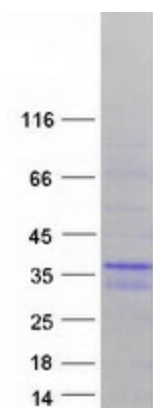
### Product images:



Circular map for RC229842



Western blot validation of overexpression lysate (Cat# [LY432842]) using anti-DDK antibody (Cat# [TA50011-100]). Left: Cell lysates from untransfected HEK293T cells; Right: Cell lysates from HEK293T cells transfected with RC229842 using transfection reagent MegaTran 2.0 (Cat# [TT210002]).



Coomassie blue staining of purified MBNL3 protein (Cat# [TP329842]). The protein was produced from HEK293T cells transfected with MBNL3 cDNA clone (Cat# RC229842) using MegaTran 2.0 (Cat# [TT210002]).