

Product datasheet for **RC229839**

MARCH I (MARCH1) (NM_001166373) Human Tagged ORF Clone

Product data:

Product Type:	Expression Plasmids
Product Name:	MARCH I (MARCH1) (NM_001166373) Human Tagged ORF Clone
Tag:	Myc-DDK
Symbol:	MARCH I
Synonyms:	MARCH-I; MARCH1; RNF171
Mammalian Cell Selection:	Neomycin
Vector:	pCMV6-Entry (PS100001)
E. coli Selection:	Kanamycin (25 ug/mL)
ORF Nucleotide Sequence:	>RC229839 representing NM_001166373 Red=Cloning site Blue=ORF Green=Tags(s)

TTTTGTAATACGACTCACTATAGGGCGCCGGGAATTCGTCGACTGGATCCGGTACCGAGGAGATCTGCC
GCC**CGATCGCC**

ATGCTGGGCTGGTGTGAAGCGATAGCCCGTAACCCTCACAGAATTCAAACAACACGCGAACACCCGAGA
TCTCAGGGGATTTGGCTGACGCCTCACAACTCCACATTGAATGAAAAATCCCCAGGGCGATCTGCAAG
TCGATCAAGTAACATTTCAAAGCAAGCAGCCCAACAACAGGGACAGCTCCAGGAGCCAGTCAAGGTTG
TCTGTCTGTCCATCCACTCAGGACATCTGCAGAATCTGCTACTGCGAAGGGGATGAAGAGAGCCCTCA
TCACACCTGTCGCTGCACTGGGACACTGCGCTTTGTCCACCAGTCTGCCTCCACCAGTGGATAAAGAG
CTCAGATACACGCTGCTGTGAGCTCTGCAAGTATGACTTCATAATGGAGACCAAGCTCAAACCCCTCCGG
AAGTGGGAGAACTACAGATGACCACAAGTAAAAGGAGGAAAATATTCTGCTCTGTACATTCCACGTAA
TCGCGATCACCTGTGTGGTTTGGTCTTTGTATGTATTGATAGACCGGACAGCGGAGGAAATCAAGCAAGG
CAATGACAATGGTGTCTTGAATGGCCATTTGGACAAAAGTGGTTGTGGTAGCCATTGGCTTACAGGA
GGTCTTGTCTTACATGTACGTACAGTGTAAAGTCTATGTTCAAGTTGTGGCGCAGGCTGAAGGCTACAACC
GTGTGATCTTTGTACAAAATTGCCAGACACTGCCAAAAAAGTGGAGAAGAACTTCTCATGTAATGTAAA
CACAGACATCAAAGATGCTGTGGTAGTGCCTGTACCACAAACAGGTGCAAATTCCTGCCATCTGCAGAG
GGTGGCCCCCTGAAGTTGTATCAGTC

ACGCGTACGCGGCGCTCGAGCAGAAACTCATCTCAGAAGAGGATCTGGCAGCAAATGATATCCTGGATT
ACAAGGATGACGACGATAAGGTTTAA



[View online »](#)

Protein Sequence: >RC229839 representing NM_001166373
Red=Cloning site Green=Tags(s)

MLGWCEAIARNPHRIPNNTRTPEISGLDADASQTSTLNEKSPGRSASRSSNISKASSPTTGTAPRSQSRL
 SVC PSTQDICRICHCEGDEESPLITPCRCTGTLRFVHQSLHQWIKSSDRCCCELCKYDFIMETKCLKPLR
 KWEKLMQTT SERRKIFCSVTFHVIAITCVVWSLYVLIDRTAEEIKQGNNDGVLEWPFWTKLVVVAIGFTG
 GLVFMVYQCKVYVQLWRRLLKAYNRVIFVQNC P D T A K K L E K N F S C N V N T D I K D A V V V P V P Q T G A N S L P S A E
 GGPPEVVSV

TRTRPLEQKLISEEDLAANDILDYKDDDDKV

Chromatograms: https://cdn.origene.com/chromatograms/mk8007_b06.zip

Restriction Sites: SgfI-MluI

Cloning Scheme:

Cloning sites used for ORF Shuttling:



* The last codon before the Stop codon of the ORF

ACCN: NM_001166373

ORF Size: 867 bp

OTI Disclaimer: The molecular sequence of this clone aligns with the gene accession number as a point of reference only. However, individual transcript sequences of the same gene can differ through naturally occurring variations (e.g. polymorphisms), each with its own valid existence. This clone is substantially in agreement with the reference, but a complete review of all prevailing variants is recommended prior to use. [More info](#)

OTI Annotation: This clone was engineered to express the complete ORF with an expression tag. Expression varies depending on the nature of the gene.

Components: The ORF clone is ion-exchange column purified and shipped in a 2D barcoded Matrix tube containing 10ug of transfection-ready, dried plasmid DNA (reconstitute with 100 ul of water).

Reconstitution Method:

1. Centrifuge at 5,000xg for 5min.
2. Carefully open the tube and add 100ul of sterile water to dissolve the DNA.
3. Close the tube and incubate for 10 minutes at room temperature.
4. Briefly vortex the tube and then do a quick spin (less than 5000xg) to concentrate the liquid at the bottom.
5. Store the suspended plasmid at -20°C. The DNA is stable for at least one year from date of shipping when stored at -20°C.

RefSeq: [NM_001166373.1](#), [NP_001159845.1](#)

RefSeq ORF: 870 bp

Locus ID: 55016

UniProt ID: [Q8TCQ1](#)

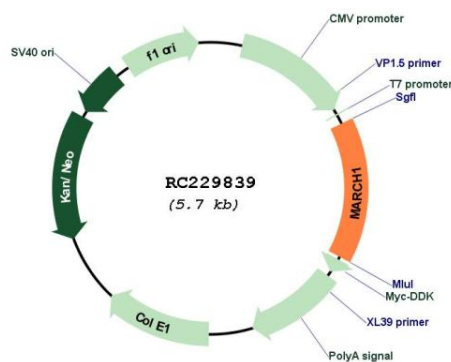
Cytogenetics: 4q32.2-q32.3

Protein Families: Druggable Genome, Transmembrane

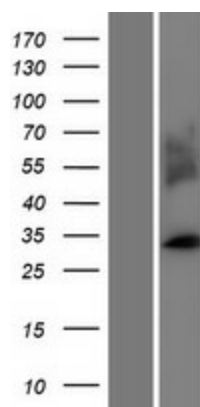
MW: 32.8 kDa

Gene Summary: MARCH1 is a member of the MARCH family of membrane-bound E3 ubiquitin ligases (EC 6.3.2.19). MARCH proteins add ubiquitin (see MIM 191339) to target lysines in substrate proteins, thereby signaling their vesicular transport between membrane compartments. MARCH1 downregulates the surface expression of major histocompatibility complex (MHC) class II molecules (see MIM 142880) and other glycoproteins by directing them to the late endosomal/lysosomal compartment (Bartee et al., 2004 [PubMed 14722266]; Thibodeau et al., 2008 [PubMed 18389477]; De Gassart et al., 2008 [PubMed 18305173]). [supplied by OMIM, Mar 2010]

Product images:



Circular map for RC229839



Western blot validation of overexpression lysate (Cat# [LY432839]) using anti-DDK antibody (Cat# [TA50011-100]). Left: Cell lysates from untransfected HEK293T cells; Right: Cell lysates from HEK293T cells transfected with RC229839 using transfection reagent MegaTran 2.0 (Cat# [TT210002]).