

## Product datasheet for **RC229837**

### **KCTD7 (NM\_001167961) Human Tagged ORF Clone**

#### Product data:

Product Type:	Expression Plasmids
Product Name:	KCTD7 (NM_001167961) Human Tagged ORF Clone
Tag:	Myc-DDK
Symbol:	KCTD7
Synonyms:	CLN14; EPM3
Mammalian Cell Selection:	Neomycin
Vector:	pCMV6-Entry (PS100001)
E. coli Selection:	Kanamycin (25 ug/mL)
ORF Nucleotide Sequence:	>RC229837 representing NM_001167961 Red=Cloning site Blue=ORF Green=Tags(s)

TTTTGTAATACGACTCACTATAGGGCGGCCGGAATTCGTCGACTGGATCCGGTACCGAGGAGATCTGCC  
GCC**CGATCGCC**

ATGGTGGTAGTCACGGGGCGGGAGCCAGACAGCCGTCGTCAGGACGGTGCCATGTCCAGCTCTGACGCCG  
AAGACGACTTTCTGGAGCCGGCCACGCCACGGCCACGCAGGCGGGGCACGCGCTGCCCTGCTGCCACA  
GGAGTTTCCTGAGGTTGTTCCCTTAACATCGGAGGGGCTCACTTCACTACACGCCTGTCCACACTGCGG  
TGCTACGAAGACACCATGTTGGCAGCCATGTTCACTGGGCGGCACTACATCCCCACGGACTCCGAGGGCC  
GGTACTTCATCGACCGAGATGGCACACACTTTGGAGATGTGCTGAATTTCTGCGCTCAGGGGACCTCCC  
ACCCAGGGAGCGTGTTCGAGCTGTGTACAAAGAGGCCAGTACTATGCCATCGGGCCCTCCTGGAGCAG  
CTGGAGAACATGCAGCCACTGAAGGGCGAGAAGGTGCGCCAAGCGTTTCTGGGACTCATGCCCTATTACA  
AAGACCACTTGGAGCGGATTGTGGAGATCGCCCGCTGCGTGCGGTCCAGCGGAAGGCCCGCTTTGCCAA  
GCTCAAGGTCTGTGCTTCAAGGAGGAGATGCCATCACCCCTATGAGTGTCCGCTCCTCAACTCCCTG  
CGATTTGAGCGGAGTGAGAGTGACGGGCAGCTTTTGGAGCACCCTGTGAAGTGGATGTGCTTTTGGGC  
CCTGGGAGGCTGTGGCTGATGTTATGACCTGCTGCACTGCCTGGTCACGGACCTCTCGGCCAGGGTCT  
CACCGTGACCACAGTGCATCGGGGTGTGTGACAAGCACCTCGTGAACCACTACTACTGCAAGCGCCCC  
ATCTATGAGTTCAAGATCACATGG

**ACGCGT**ACGCGGGCCGCTCGAGCAGAAACTCATCTCAGAAGAGGATCTGGCAGCAAATGATATCCTGGATT  
ACAAGGATGACGACGATAAGGTTTAA



[View online »](#)

**Protein Sequence:** >RC229837 representing NM\_001167961  
Red=Cloning site Green=Tags(s)

MVVVTGREPDSRRQDGAMSSSDAEDDFLEPATPTATQAGHALPLLQEFPEVVPLNIGGAHFTTRLSTLR  
 CYEDTMLAAMFSGRHYIPTDSEGRYFIDRDGTHFGDVLNFLRSGDLPPRRERVAVYKEAQYYAIGPLLEQ  
 LENMQPLKGEKVRQAFGLMPYKDHLEIRIVEIARLRAVQRKARFALKKVCVFKEEMPITPYECPDLLNSL  
 RFERSESDGQLFEHHCEVDVDFGPWEAVADVYDLLHCLVTDLSAQGLTVDHQICIGVCDKHLVNHYCKRP  
 IYEFKITW

TRTRPLEQKLISEEDLAANDILDYKDDDDKV

**Chromatograms:** [https://cdn.origene.com/chromatograms/mg4261\\_b01.zip](https://cdn.origene.com/chromatograms/mg4261_b01.zip)

**Restriction Sites:** SgfI-MluI

**Cloning Scheme:**



**ACCN:** NM\_001167961

**ORF Size:** 864 bp

**OTI Disclaimer:** The molecular sequence of this clone aligns with the gene accession number as a point of reference only. However, individual transcript sequences of the same gene can differ through naturally occurring variations (e.g. polymorphisms), each with its own valid existence. This clone is substantially in agreement with the reference, but a complete review of all prevailing variants is recommended prior to use. [More info](#)

**OTI Annotation:** This clone was engineered to express the complete ORF with an expression tag. Expression varies depending on the nature of the gene.

**Components:** The ORF clone is ion-exchange column purified and shipped in a 2D barcoded Matrix tube containing 10ug of transfection-ready, dried plasmid DNA (reconstitute with 100 ul of water).

**Reconstitution Method:**

1. Centrifuge at 5,000xg for 5min.
2. Carefully open the tube and add 100ul of sterile water to dissolve the DNA.
3. Close the tube and incubate for 10 minutes at room temperature.
4. Briefly vortex the tube and then do a quick spin (less than 5000xg) to concentrate the liquid at the bottom.
5. Store the suspended plasmid at -20°C. The DNA is stable for at least one year from date of shipping when stored at -20°C.

**RefSeq:** [NM\\_001167961.2](#), [NP\\_001161433.1](#)

**RefSeq ORF:** 867 bp

**Locus ID:** 154881

**UniProt ID:** [Q96MP8](#)

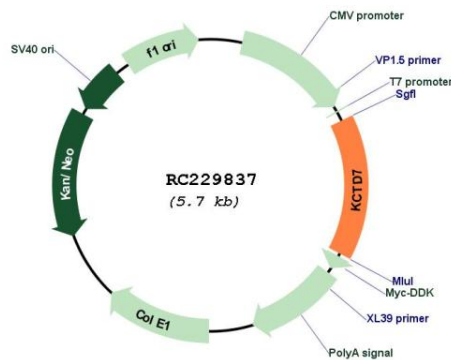
**Cytogenetics:** 7q11.21

**Protein Families:** Ion Channels: Other

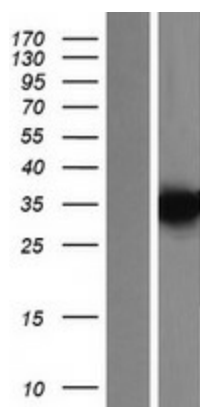
**MW:** 33.4 kDa

**Gene Summary:** This gene encodes a member of the potassium channel tetramerization domain-containing protein family. Family members are identified on a structural basis and contain an amino-terminal domain similar to the T1 domain present in the voltage-gated potassium channel. Mutations in this gene have been associated with progressive myoclonic epilepsy-3. Alternative splicing results in multiple transcript variants.[provided by RefSeq, Jan 2011]

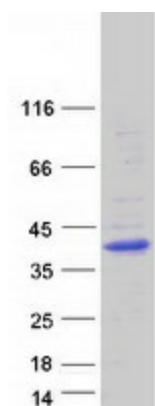
### Product images:



Circular map for RC229837



Western blot validation of overexpression lysate (Cat# [LY432837]) using anti-DDK antibody (Cat# [TA50011-100]). Left: Cell lysates from untransfected HEK293T cells; Right: Cell lysates from HEK293T cells transfected with RC229837 using transfection reagent MegaTran 2.0 (Cat# [TT210002]).



Coomassie blue staining of purified KCTD7 protein (Cat# [TP329837]). The protein was produced from HEK293T cells transfected with KCTD7 cDNA clone (Cat# RC229837) using MegaTran 2.0 (Cat# [TT210002]).