

## Product datasheet for **RC229835**

### FCRLM1 (FCRLA) (NM\_001184867) Human Tagged ORF Clone

#### Product data:

Product Type:	Expression Plasmids
Product Name:	FCRLM1 (FCRLA) (NM_001184867) Human Tagged ORF Clone
Tag:	Myc-DDK
Symbol:	FCRLM1
Synonyms:	FCRL; FCRL1; FCRLb; FCRLc1; FCRLc2; FCRLd; FCRLe; FCRLM1; FCRLX; FCRX; FREB
Mammalian Cell Selection:	Neomycin
Vector:	pCMV6-Entry (PS100001)
E. coli Selection:	Kanamycin (25 ug/mL)
ORF Nucleotide Sequence:	>RC229835 representing NM_001184867 Red=Cloning site Blue=ORF Green=Tags(s)

TTTTGTAATACGACTCACTATAGGGCGCCGGGAATTCGTCGACTGGATCCGGTACCGAGGAGATCTGCCGCC**CGGATCGCC**

ATGTTGAAGAAAATCAGTGTGGGGTTCAGGAGACCTAAACACAGTCACCATGAAGCTGGGCTGTGTCC  
TCATGGCCTGGGCCCTACCTTCCCTTGGTGTGCTCTGGTGGCCAGATGCTACTGGCTGCCAGTTT  
TGAGACGCTGCAGTGTGAGGGACCTGTCTGCACTGAGGAGAGCAGCTGCCACACGGAGGATGACTTGACT  
GATGCAAGGGAAGCTGGCTTCCAGGTCAAGGCCTACACTTTCAGTGAACCCTTCCACCTGATTGTGTCT  
ATGAAGTGTTCAGCGCAATTCTCAGAGCTGTACCCTCAGCTGAACCCCAAGCAGGAAGCCCCATGAC  
CCTGAGTTGTGAGACAAAGTTGCCCTGCAGAGGTCAGCTGCCCGCTCCTCTTCTCCTTACAAGGAT  
GGAAGGATAGTGCAAAGCAGGGGCTCTCCTCAGAATTCAGATCCCCACAGCTTCAAGATCACTCCG  
GGTCATACTGGTGTGAGGCAGCCACTGAGGACAACCAAGTTTGGAAACAGAGCCCCCAGCTAGAGATCAG  
AGTGCAGGGTGTCTCCAGCTCTGCTGCACCTCCCACATTGAATCCAGCTCCTCAGAAATCAGCTGTCCA  
GGAAGTGTCTCAGGAGGCCCTGGGCTCTGCCTCCGCCGCAACCCCATCTTCTGAGGATCCAGGCT  
TTTCTTCTCCTCTGGGATGCCAGATCCTCATCTGTATCACCAGATGGGCTTCTTCTCAAACACATGCA  
GGATGTGAGAGTCTCCTCGGTACCTGCTCATGGAGTTGAGGAATTATCTGCCACCGGAAGCCTGGG  
ACCACAAAGGCTACTGCTGAA

**ACGCGT**ACGCGGCCGCTCGAGCAGAAACTCATCTCAGAAGAGGATCTGGCAGCAAATGATATCCTGGATT  
ACAAGGATGACGACGATAAGGTTTAA



[View online »](#)

**Protein Sequence:** >RC229835 representing NM\_001184867  
Red=Cloning site Green=Tags(s)

MLKKISVGVAGDLNTVTMKLGCVLMAWALYL SLGVLWVAQMLLAASFETLQCEGPVCTEESSCHTEDDLT  
DAREAGFQVKAYTFSEPFHLIVSYELFPAPILRAVPSAEPQAGSPMTLSCQTKLPLQRSAARLLFSFYKD  
GRIVQSRGLSSEFQIPTASEDHSGSYWCEAATEDNQVWKQSPQLEIRVQGASSAAPPTLNPAPQKSAAP  
GTAPEEAPGPLPPPTPSSSEDPGFSSPLGMPDPHLYHQMGLLLKHMQDVRVLLGHLLMELRELSGHRKPG  
TTKATAE

TRTRPLEQKLISEEDLAANDILDYKDDDDKV

**Chromatograms:** [https://cdn.origene.com/chromatograms/mk8049\\_e07.zip](https://cdn.origene.com/chromatograms/mk8049_e07.zip)

**Restriction Sites:** SgfI-MluI

**Cloning Scheme:**



**ACCN:** NM\_001184867

**ORF Size:** 861 bp

**OTI Disclaimer:** The molecular sequence of this clone aligns with the gene accession number as a point of reference only. However, individual transcript sequences of the same gene can differ through naturally occurring variations (e.g. polymorphisms), each with its own valid existence. This clone is substantially in agreement with the reference, but a complete review of all prevailing variants is recommended prior to use. [More info](#)

**OTI Annotation:** This clone was engineered to express the complete ORF with an expression tag. Expression varies depending on the nature of the gene.

**Components:** The ORF clone is ion-exchange column purified and shipped in a 2D barcoded Matrix tube containing 10ug of transfection-ready, dried plasmid DNA (reconstitute with 100 ul of water).

**Reconstitution Method:**

1. Centrifuge at 5,000xg for 5min.
2. Carefully open the tube and add 100ul of sterile water to dissolve the DNA.
3. Close the tube and incubate for 10 minutes at room temperature.
4. Briefly vortex the tube and then do a quick spin (less than 5000xg) to concentrate the liquid at the bottom.
5. Store the suspended plasmid at -20°C. The DNA is stable for at least one year from date of shipping when stored at -20°C.

**RefSeq:** [NM\\_001184867.1](#), [NP\\_001171796.1](#)

**RefSeq ORF:** 813 bp

**Locus ID:** 84824

**UniProt ID:** [Q7L513](#)

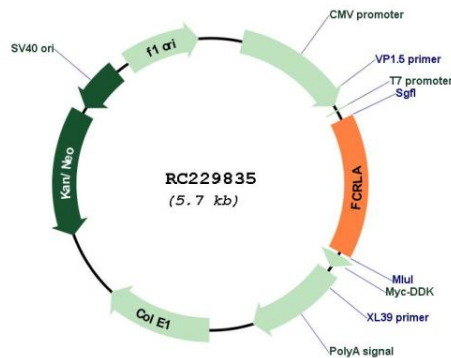
**Cytogenetics:** 1q23.3

**Protein Families:** Secreted Protein, Transmembrane

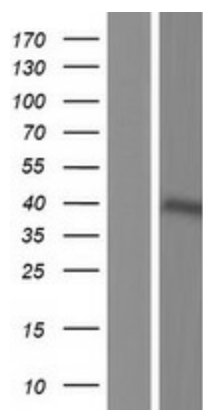
**MW:** 31.5 kDa

**Gene Summary:** This gene encodes a protein similar to receptors for the Fc fragment of gamma immunoglobulin (IgG). These receptors, referred to as FCGRs, mediate the destruction of IgG-coated antigens and of cells induced by antibodies. This encoded protein is selectively expressed in B cells, and may be involved in their development. This protein may also be involved in the development of lymphomas. Multiple alternatively spliced transcript variants that encode different protein isoforms have been described for this gene. [provided by RefSeq, Aug 2011]

### Product images:



Circular map for RC229835



Western blot validation of overexpression lysate (Cat# [LY432835]) using anti-DDK antibody (Cat# [TA50011-100]). Left: Cell lysates from untransfected HEK293T cells; Right: Cell lysates from HEK293T cells transfected with RC229835 using transfection reagent MegaTran 2.0 (Cat# [TT210002]).