

## Product datasheet for **RC229833**

### **RNF135 (NM\_001184992) Human Tagged ORF Clone**

#### Product data:

Product Type:	Expression Plasmids
Product Name:	RNF135 (NM_001184992) Human Tagged ORF Clone
Tag:	Myc-DDK
Symbol:	RNF135
Synonyms:	L13; MMFD; REUL; Riplet
Mammalian Cell Selection:	Neomycin
Vector:	pCMV6-Entry (PS100001)
E. coli Selection:	Kanamycin (25 ug/mL)
ORF Nucleotide Sequence:	>RC229833 representing NM_001184992 Red=Cloning site Blue=ORF Green=Tags(s)

TTTGTGAATACGACTCACTATAGGGCGGCCGGAATTCGTCGACTGGATCCGGTACCGAGGAGATCTGCC  
 GCC**CGATCGC**C

ATGGCGGGCCTGGGCTGGGCTCCGCCGTTCCCGTGTGGCTGGCCGAGGACGACCTCGGCTGCATCATCT  
 GCCAGGGGCTGCTGGACTGGCCCGCCACGCTGCCCTGCGGCCACAGCTTCTGCCGCCACTGCCTGGAGGC  
 CCTGTGGGGCGCCCGGACGCGCCGCTGGGCTGCCCCACTTGCCGCCAGGGCGCCGCGCAGCAGCCG  
 CACCTGCGGAAGAACACGCTACTGCAGGACCTGGCCGACAAGTACCGCCGCGCCGACGCGAGATACAGG  
 CGGGCTCCGACCCTGCCACTGCCCTGCCGGGCTCCAGTTCCTCTCCAGCGCGCCGCGAGGCCCG  
 GCGCCGCCCGGAAGTGCAGCGGGTGGCAGTAGAGAAGAGCATCACAGAAGTTGCTCAGGAGCTGACAGAG  
 CTGGTGGAAACATCTTGTAGACATTGTGAGAAGCCTGCAGAATCAGAGGCCCTATCAGAATCTGGACCAG  
 ACAACGAAGTGAACATCTTGGCAAGGCTTTTCTTCTGGGGTGGATCTTCCATGGCTTCTCAAAGCT  
 GGTGACTTCCGACACAGCTGCAGGGAAATCAGAGATATTCTCCATGACCTAGAAGAAATTCAGGAAAA  
 TTACAAGAAAGCGTCACCTGAAAGAGGCTCCTGAAGCAAAATGCAGGGTTCTCTGTTGCCAGGCTGG  
 AGTGCAGTGGCACAATCACTGCAGCCTCGATCTCTCAGGCTCAGGAGAACTCCTGGAAGCCCCGTCTTCC  
 TCCTCATGCCCATTGCCTGACCAGAGCCACCCTGCACTCAGGAGAGCTTCTCGGTTTGCTCAGTGGGCCA  
 TCCATCCAACCTTAACT

**ACGCGT**ACGCGGGCGCTCGAGCAGAAACTCATCTCAGAAGAGGATCTGGCAGCAAATGATATCCTGGATT  
 ACAAGGATGACGACGATAAGGTTTAA


[View online »](#)

**Protein Sequence:** >RC229833 representing NM\_001184992  
 Red=Cloning site Green=Tags(s)

MAGLGLGSAPVWLAEDDLGCIICQGLLDWPATLPCGHSFCRHCLEALWGARDARRWACPTCRQGAAQQP  
 HLRKNTLLQDLADKYRRAAREIQAGSDPAHCPCPGSSSLSSAAARPRRPPELQRVAVEKSITEVAQELTE  
 LVEHLVDIVRSLQNQRPLSESGPDNELSILGKAFSSGVLSMASPKLVTSDTAAGKIRDILHDLEEIQEK  
 LQESVTWKEAPEAQMQGSLLPRLECSGTITAASISQAQENSWKPRLPPHAHCLTRATLHSGELLGLLSGP  
 SIQPLT

TRTRPLEQKLISEEDLAANDILDYKDDDDKV

**Chromatograms:** [https://cdn.origene.com/chromatograms/mk8037\\_b07.zip](https://cdn.origene.com/chromatograms/mk8037_b07.zip)

**Restriction Sites:** SgfI-MluI

**Cloning Scheme:**



**ACCN:** NM\_001184992

**ORF Size:** 858 bp

**OTI Disclaimer:** The molecular sequence of this clone aligns with the gene accession number as a point of reference only. However, individual transcript sequences of the same gene can differ through naturally occurring variations (e.g. polymorphisms), each with its own valid existence. This clone is substantially in agreement with the reference, but a complete review of all prevailing variants is recommended prior to use. [More info](#)

**OTI Annotation:** This clone was engineered to express the complete ORF with an expression tag. Expression varies depending on the nature of the gene.

**Components:** The ORF clone is ion-exchange column purified and shipped in a 2D barcoded Matrix tube containing 10ug of transfection-ready, dried plasmid DNA (reconstitute with 100 ul of water).

**Reconstitution Method:**

1. Centrifuge at 5,000xg for 5min.
2. Carefully open the tube and add 100ul of sterile water to dissolve the DNA.
3. Close the tube and incubate for 10 minutes at room temperature.
4. Briefly vortex the tube and then do a quick spin (less than 5000xg) to concentrate the liquid at the bottom.
5. Store the suspended plasmid at -20°C. The DNA is stable for at least one year from date of shipping when stored at -20°C.

**Note:** Plasmids are not sterile. For experiments where strict sterility is required, filtration with 0.22um filter is required.

**RefSeq:** [NM\\_001184992.2](#)

**RefSeq ORF:** 861 bp

**Locus ID:** 84282

**UniProt ID:** [Q8IUD6](#)

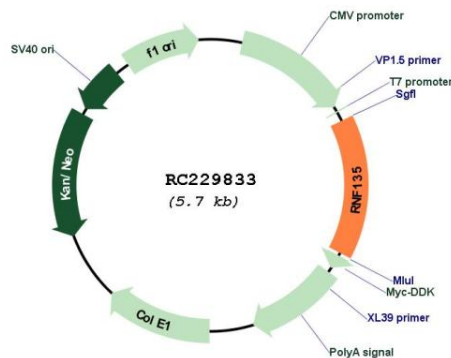
**Cytogenetics:** 17q11.2

**Protein Families:** Druggable Genome

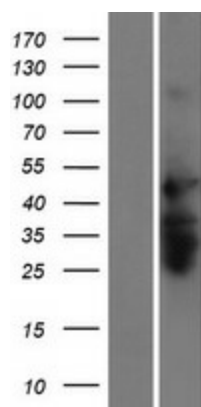
**MW:** 31.4 kDa

**Gene Summary:** The protein encoded by this gene contains a RING finger domain, a motif present in a variety of functionally distinct proteins and known to be involved in protein-protein and protein-DNA interactions. This gene is located in a chromosomal region known to be frequently deleted in patients with neurofibromatosis. Alternatively spliced transcript variants encoding distinct isoforms have been reported. [provided by RefSeq, Jul 2008]

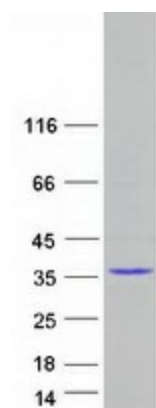
## Product images:



Circular map for RC229833



Western blot validation of overexpression lysate (Cat# [LY432833]) using anti-DDK antibody (Cat# [TA50011-100]). Left: Cell lysates from untransfected HEK293T cells; Right: Cell lysates from HEK293T cells transfected with RC229833 using transfection reagent MegaTran 2.0 (Cat# [TT210002]).



Coomassie blue staining of purified RNF135 protein (Cat# [TP329833]). The protein was produced from HEK293T cells transfected with RNF135 cDNA clone (Cat# RC229833) using MegaTran 2.0 (Cat# [TT210002]).