

Product datasheet for **RC229827**

LY108 (SLAMF6) (NM_001184715) Human Tagged ORF Clone

Product data:

Product Type:	Expression Plasmids
Product Name:	LY108 (SLAMF6) (NM_001184715) Human Tagged ORF Clone
Tag:	Myc-DDK
Symbol:	LY108
Synonyms:	CD352; KALI; KALib; Ly108; NTB-A; NTBA; SF2000
Mammalian Cell Selection:	Neomycin
Vector:	pCMV6-Entry (PS100001)
E. coli Selection:	Kanamycin (25 ug/mL)
ORF Nucleotide Sequence:	>RC229827 representing NM_001184715 Red=Cloning site Blue=ORF Green=Tags(s)

TTTTGTAATACGACTCACTATAGGGCGGCCGGAATTCGTCGACTGGATCCGGTACCGAGGAGATCTGCC
GCC**CGGATCGCC**

ATGTTGTGGCTGTTCCAATCGCTCCTGTTGTCTTCTGCTTTGGCCAGTACCCCATGAAACCAAAAGTC
CAGAAATCCACGTGACTAATCCGAAACAGGAAAGCGACTGAACTTCACCCAGTCCTACTCCCTGCAACT
CAGCAACCTGAAGATGGAAGACACAGGCTCTTACAGAGCCAGATATCCACAAAGACCTCTGCAAAGCTG
TCCAGTTACACTCTGAGGATATTAAGACAACCTGAGGAACATACAAGTTACCAATCACAGTCAGCTATTTCC
AGAATATGACCTGTGAGCTCCATCTGACTTGCTCTGTGGAGGATGCAGATGACAATGTCTCATTTCAGATG
GGAGGCCCTGGGAAACACACTTTCAAGTCAGCCAAACCTCACTGTCTCCTGGGACCCAGGATTTCCAGT
GAACAGGACTACACCTGCATAGCAGAGAATGCTGTGAGTAATTTATCCTTCTCTGTCTCTGCCAGAAAGC
TTTGCGAAGATGTTAAAATTCAATATACAGATACCAAAATGATTCTGTTTATGGTTTCTGGGATATGCAT
AGTCTTCGGTTTCATCATACTGCTGTTACTTGTGTTTGGAGAAAAGAAGAGATTCCCTATCTTTGTCTACT
CAGCGAACACAGGGCCCCGAGTCCGCAAGGAACCTAGAGTATGTTTCAGTGTCTCCAACGAACAACACTG
TGTATGCTTCAGTCATCATTCAAACAGGAAACAGAAATCTGGACACCTAGAGAAAATGATACTATCAC
AATTTACTCCACAATTAATCATTCCAAAGAGAGTAAACCCACTTTTTCCAGGGCAACTGCCCTTGACAAT
GTCGTG

ACGCGTACGCGGCCGCTCGAGCAGAAACTCATCTCAGAAGAGGATCTGGCAGCAAATGATATCCTGGATT
ACAAGGATGACGACGATAAGGTTTAA



[View online »](#)

Protein Sequence: >RC229827 representing NM_001184715
Red=Cloning site Green=Tags(s)

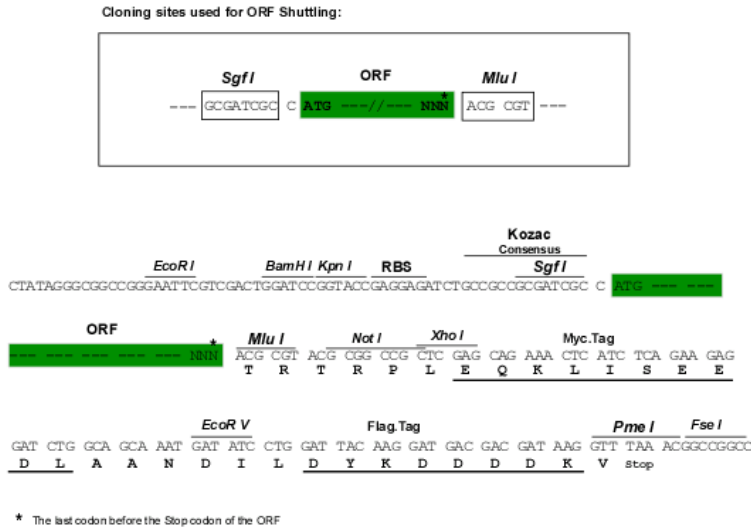
MLWLFQSLLFVFCFVPVPHETKSPEIHVTNPKQGKRLNFTQSYSLQLSNLKMEDTGSYRAQISTKTSAKL
 SSYTLRILRQLRNIQVTNHSQLFQNMTCELHLTCSVEDADDNVSFRWEALGNTLSSQPNLTVSWDPRISS
 EQDYTCIAENAVSNLSFSVSAQKLCEDVKIQYTDTKMILFMVSGICIVFGFIILLLLVLKRKRDLSLST
 QRTQGPESARNLEYVSVSPTNNTVYASVTHSNRETEIWTPRENDTITIIYSTINHSKESKPTFSRATALDN
 VV

TRTRPLEQKLISEEDLAANDILDYKDDDDKV

Chromatograms: https://cdn.origene.com/chromatograms/mk8049_b09.zip

Restriction Sites: SgfI-MluI

Cloning Scheme:



ACCN: NM_001184715

ORF Size: 846 bp

OTI Disclaimer: The molecular sequence of this clone aligns with the gene accession number as a point of reference only. However, individual transcript sequences of the same gene can differ through naturally occurring variations (e.g. polymorphisms), each with its own valid existence. This clone is substantially in agreement with the reference, but a complete review of all prevailing variants is recommended prior to use. [More info](#)

OTI Annotation: This clone was engineered to express the complete ORF with an expression tag. Expression varies depending on the nature of the gene.

Components: The ORF clone is ion-exchange column purified and shipped in a 2D barcoded Matrix tube containing 10ug of transfection-ready, dried plasmid DNA (reconstitute with 100 ul of water).

Reconstitution Method:

1. Centrifuge at 5,000xg for 5min.
2. Carefully open the tube and add 100ul of sterile water to dissolve the DNA.
3. Close the tube and incubate for 10 minutes at room temperature.
4. Briefly vortex the tube and then do a quick spin (less than 5000xg) to concentrate the liquid at the bottom.
5. Store the suspended plasmid at -20°C. The DNA is stable for at least one year from date of shipping when stored at -20°C.

RefSeq: [NM_001184715.2](#)

RefSeq ORF: 849 bp

Locus ID: 114836

UniProt ID: [Q96DU3](#)

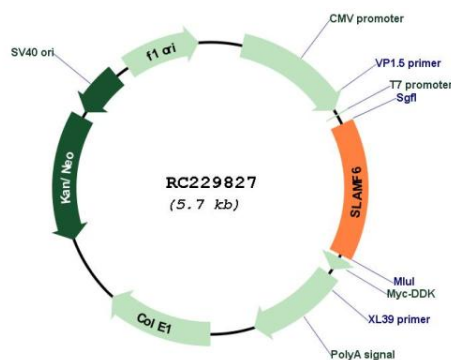
Cytogenetics: 1q23.2-q23.3

Protein Families: Druggable Genome, Transmembrane

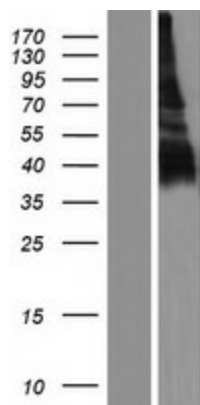
MW: 32.5 kDa

Gene Summary: The protein encoded by this gene is a type I transmembrane protein, belonging to the CD2 subfamily of the immunoglobulin superfamily. This encoded protein is expressed on Natural killer (NK), T, and B lymphocytes. It undergoes tyrosine phosphorylation and associates with the Src homology 2 domain-containing protein (SH2D1A) as well as with SH2 domain-containing phosphatases (SHPs). It functions as a coreceptor in the process of NK cell activation. It can also mediate inhibitory signals in NK cells from X-linked lymphoproliferative patients. Alternative splicing results in multiple transcript variants encoding distinct isoforms. [provided by RefSeq, May 2010]

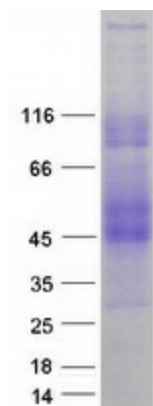
Product images:



Circular map for RC229827



Western blot validation of overexpression lysate (Cat# [LY432827]) using anti-DDK antibody (Cat# [TA50011-100]). Left: Cell lysates from untransfected HEK293T cells; Right: Cell lysates from HEK293T cells transfected with RC229827 using transfection reagent MegaTran 2.0 (Cat# [TT210002]).



Coomassie blue staining of purified SLAMF6 protein (Cat# [TP329827]). The protein was produced from HEK293T cells transfected with SLAMF6 cDNA clone (Cat# RC229827) using MegaTran 2.0 (Cat# [TT210002]).