

Product datasheet for **RC229811**

Syntaxin 3 (STX3) (NM_001178040) Human Tagged ORF Clone

Product data:

Product Type:	Expression Plasmids
Product Name:	Syntaxin 3 (STX3) (NM_001178040) Human Tagged ORF Clone
Tag:	Myc-DDK
Symbol:	Syntaxin 3
Synonyms:	STX3A
Mammalian Cell Selection:	Neomycin
Vector:	pCMV6-Entry (PS100001)
E. coli Selection:	Kanamycin (25 ug/mL)
ORF Nucleotide Sequence:	>RC229811 representing NM_001178040 Red=Cloning site Blue=ORF Green=Tags(s)

TTTTGTAATACGACTCACTATAGGGCGGCCGGAATTCGTCGACTGGATCCGGTACCGAGGAGATCTGCC
GCC**CGGATCGCC**

ATGAAGGACCGTCTGGAGCAGCTGAAGGCCAAGCAGCTGACACAGGATGATGATACTGATGCGGTTGAGA
TTGCTATCGACAACACGGCTTTTATGGACGAGTTCTTTCTGAGATTGAGGAACTCGGCTTAACATTGA
CAAGATCTCAGAACATGTAGAGGAGGCTAAGAACTCTACAGTATCATTCTCTGCACCGATTCCAGAG
CCAAAAACCAAGGATGACCTAGAGCAGCTCAGACTGAGATTAAGAAAAGGCCAACACGTCCGGAACA
AACTGAAGAGCATGGAGAAGCATATTGAAGAAGATGAGGTCAGGTCATCGGCAGACCTTCGGATTCCGAA
ATCCCAGCACTCTGTCTTTCTCGGAAGTTTGTGGAGGTGATGACCAAATACAATGAAGCTCAAGTGGAC
TTCCGAGAACGCAGCAAAGGGCGAATCCAGCGGCAGCTCGAAATTAAGGCAAAAAGACAACCGATGAGG
AGCTGGAGGAGATGTTGGAGAGTGGCAACCCGGCCATCTTCACTTCTGGGATCATTGACTCACAGATTTT
CAAGCAAGCCCTCAGTGAGATTGAGGGACGACACAAGGACATTGTGAGGCTGGAGAGCAGCATCAAGGAG
CTTACGACATGTTTATGGACATCGCCATGCTGGTGGAGAATCAGGGTGAGATGTTAGATAACATAGAGT
TGAATGTCATGCACACAGTGGACCACGTGGAGAAGGCACGAGATGAAACGAAAAAGCTGTGAAATACCA
GAGTCAGGCCCGAAGAACTGATTTCACTCCAGACTGGTGTGGCCACCCCTTGTCTTCAGA

ACGCGTACGCGGCCGCTCGAGCAGAACTCATCTCAGAAGAGGATCTGGCAGCAAATGATATCCTGGATT
ACAAGGATGACGACGATAAGGTTTAA



[View online »](#)

Protein Sequence: >RC229811 representing NM_001178040
Red=Cloning site Green=Tags(s)

MKDRLEQLKAKQLTQDDDTDAVEIAIDNTAFMDEFFSEIEETRLNIDKISEHVVEAKKLYSIILSAPIPE
 PKTKDDLEQLTTEIKKRANVRNKLKSMEKHIEEDEVSRSSADLRIRKSQHSVLSRKFVEVMTKYNEAQVD
 FRERSKGRIQRQLEITGKKTDEELEEMLESGNPAIFTSGIIDSQISKQALSEIEGRHKDVRLESSIKE
 LHDMFMDIAMLVENQGEMLDNIELNVMHTVDHVEKARDETKKAVKYQSQARKKLI SLQTGVATLVFR

TRTRPLEQKLISEEDLAANDILDYKDDDDKV

Chromatograms: https://cdn.origene.com/chromatograms/mk8048_g11.zip

Restriction Sites: SgfI-MluI

Cloning Scheme:



ACCN: NM_001178040

ORF Size: 831 bp

OTI Disclaimer: The molecular sequence of this clone aligns with the gene accession number as a point of reference only. However, individual transcript sequences of the same gene can differ through naturally occurring variations (e.g. polymorphisms), each with its own valid existence. This clone is substantially in agreement with the reference, but a complete review of all prevailing variants is recommended prior to use. [More info](#)

OTI Annotation: This clone was engineered to express the complete ORF with an expression tag. Expression varies depending on the nature of the gene.

Components: The ORF clone is ion-exchange column purified and shipped in a 2D barcoded Matrix tube containing 10ug of transfection-ready, dried plasmid DNA (reconstitute with 100 ul of water).

Reconstitution Method:

1. Centrifuge at 5,000xg for 5min.
2. Carefully open the tube and add 100ul of sterile water to dissolve the DNA.
3. Close the tube and incubate for 10 minutes at room temperature.
4. Briefly vortex the tube and then do a quick spin (less than 5000xg) to concentrate the liquid at the bottom.
5. Store the suspended plasmid at -20°C. The DNA is stable for at least one year from date of shipping when stored at -20°C.

RefSeq: [NM_001178040.2](#)

RefSeq ORF: 834 bp

Locus ID: 6809

UniProt ID: [Q13277](#)

Cytogenetics: 11q12.1

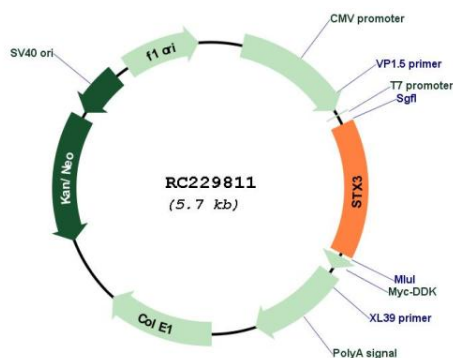
Protein Families: Druggable Genome, Stem cell - Pluripotency, Transmembrane

Protein Pathways: SNARE interactions in vesicular transport

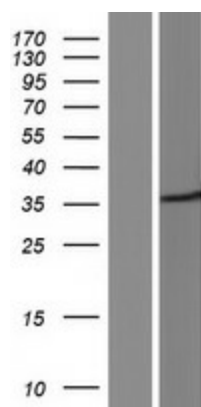
MW: 32.5 kDa

Gene Summary: The gene is a member of the syntaxin family. The encoded protein is targeted to the apical membrane of epithelial cells where it forms clusters and is important in establishing and maintaining polarity necessary for protein trafficking involving vesicle fusion and exocytosis. Alternative splicing results in multiple transcript variants. [provided by RefSeq, May 2010]

Product images:



Circular map for RC229811



Western blot validation of overexpression lysate (Cat# [LY432811]) using anti-DDK antibody (Cat# [TA50011-100]). Left: Cell lysates from untransfected HEK293T cells; Right: Cell lysates from HEK293T cells transfected with RC229811 using transfection reagent MegaTran 2.0 (Cat# [TT210002]).