

Product datasheet for **RC229806**

CD244 (NM_001166664) Human Tagged ORF Clone

Product data:

Product Type: Expression Plasmids
Product Name: CD244 (NM_001166664) Human Tagged ORF Clone
Tag: Myc-DDK
Symbol: CD244
Synonyms: 2B4; NAIL; NKR2B4; Nmrk; SLAMF4
Mammalian Cell Selection: Neomycin
Vector: pCMV6-Entry (PS100001)
E. coli Selection: Kanamycin (25 ug/mL)
ORF Nucleotide Sequence: >RC229806 representing NM_001166664
 Red=Cloning site Blue=ORF Green=Tags(s)

TTTTGTAATACGACTCACTATAGGGCGGCCGGAATTCGTCGACTGGATCCGGTACCGAGGAGATCTGCC
 GCC**CGATCGCC**

ATGCTGGGGCAAGTGGTCACCCTCATACTCCTCCTGCTCCTCAAGGTGTATCAGGGCAAAGGATGCCAGG
 GATCAGCTGACCATGTGGTTAGCATCTCGGGAGTGCCCTTCAGTTACAACCAAACAGCATAACAGACGAA
 GGTTGACAGCATTGCATGGAAGAAGTTGCTGCCCTCACAAAATGGATTTTCATCACATATTGAAGTGGGAG
 AATGGCTCTTTGCCTTCCAATACTTCCAATGATAGATTCAAGTTTATAGTCAAGAACTTGAGTCTTCTCA
 TCAAGGCAGCTCAGCAGCAGGACAGTGGCCTCTACTGCCTGGAGGTCACCAGTATATCTGGAAAAGTTCA
 GACAGCCACGTTCCAGGTTTTGTATTTGAATTCAGATTTTGGCCGTTTTTGGTGATCATCGTGATTCTA
 AGCGCACTGTTCCCTTGGCACCCCTTGCTGCTTCTGTGTGGAGGAGAAAAGAGGAAGGAGAAGCAGTCAG
 AGACCAGTCCCAAGGAATTTTTGACAATTTACGAAGATGTCAAGGATCTGAAAACAGGAGAAATCACGA
 GCAGGAGCAGACTTTTCTGGAGGGGGAGCACCATCTACTCTATGATCCAGTCCAGTCTTCTGTCTCC
 ACGTCACAAGAACCTGCATATACATTATTTCAATTAATTCAGCCTTCCAGGAAGTCTGGATCCAGGAAGA
 GGAACCACAGCCCTTCTTCAATAGCACTATCTATGAAGTGATTGGAAAGAGTCAACCTAAAGCCAGAA
 CCCTGCTCGATTGAGCCGCAAAGAGCTGGAGAAGTTGATGTTTATTCC

ACGCGTACGCGGCCGCTCGAGCAGAAACTCATCTCAGAAGAGGATCTGGCAGCAAATGATATCCTGGATT
 ACAAGGATGACGACGATAAGGTTTAA



[View online »](#)

Protein Sequence: >RC229806 representing NM_001166664
Red=Cloning site Green=Tags(s)

MLGQVVTLLLLLLLVYQGGKGCQGSADHVVSISGVPLQLQPNSIQTKVDSIAWKLLPSQNGFHILKWE
 NGSLPSNTSNDRF SFIVKNLSLLIKAAQQD SGLYCLEVTSISGKVQATFQVVFVFRFPFLVIVIL
 SALFLGTLACFCVWRRKRKEKQSETSPKEFLTIYEDVKDLKTRRNHEQEQTFFGGGSTIYSMIQSQSSAP
 TSQEPAYTLYSLIQPSRKSRSRKRNHSPSFNSTIYEVIKGSQPKAQNPARLSRKELENFDVYS

TRTRPLEQKLISEEDLAANDILDYKDDDDKV

Chromatograms: https://cdn.origene.com/chromatograms/mk8048_e05.zip

Restriction Sites: SgfI-MluI

Cloning Scheme:

Cloning sites used for ORF Shuttling:



* The last codon before the Stop codon of the ORF

ACCN: NM_001166664

ORF Size: 819 bp

OTI Disclaimer: The molecular sequence of this clone aligns with the gene accession number as a point of reference only. However, individual transcript sequences of the same gene can differ through naturally occurring variations (e.g. polymorphisms), each with its own valid existence. This clone is substantially in agreement with the reference, but a complete review of all prevailing variants is recommended prior to use. [More info](#)

OTI Annotation: This clone was engineered to express the complete ORF with an expression tag. Expression varies depending on the nature of the gene.

Components: The ORF clone is ion-exchange column purified and shipped in a 2D barcoded Matrix tube containing 10ug of transfection-ready, dried plasmid DNA (reconstitute with 100 ul of water).

Reconstitution Method:

1. Centrifuge at 5,000xg for 5min.
2. Carefully open the tube and add 100ul of sterile water to dissolve the DNA.
3. Close the tube and incubate for 10 minutes at room temperature.
4. Briefly vortex the tube and then do a quick spin (less than 5000xg) to concentrate the liquid at the bottom.
5. Store the suspended plasmid at -20°C. The DNA is stable for at least one year from date of shipping when stored at -20°C.

RefSeq: [NM_001166664.2](#)

RefSeq ORF: 822 bp

Locus ID: 51744

UniProt ID: [Q9BZW8](#)

Cytogenetics: 1q23.3

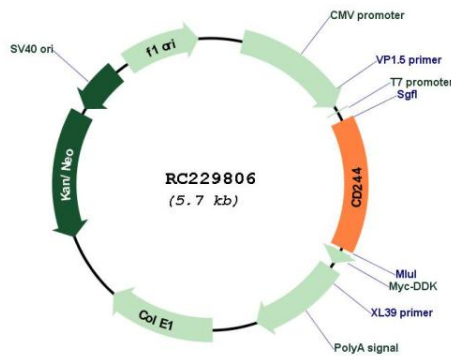
Protein Families: Druggable Genome, ES Cell Differentiation/IPS, Transmembrane

Protein Pathways: Natural killer cell mediated cytotoxicity

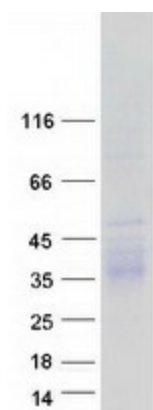
MW: 31.2 kDa

Gene Summary: This gene encodes a cell surface receptor expressed on natural killer (NK) cells (and some T cells) that mediate non-major histocompatibility complex (MHC) restricted killing. The interaction between NK-cell and target cells via this receptor is thought to modulate NK-cell cytolytic activity. Alternatively spliced transcript variants encoding different isoforms have been found for this gene.[provided by RefSeq, Oct 2009]

Product images:



Circular map for RC229806



Coomassie blue staining of purified CD244 protein (Cat# [TP329806]). The protein was produced from HEK293T cells transfected with CD244 cDNA clone (Cat# RC229806) using MegaTran 2.0 (Cat# [TT210002]).