

Product datasheet for **RC229805**

CLM 9 (CD300LG) (NM_001168323) Human Tagged ORF Clone

Product data:

Product Type:	Expression Plasmids
Product Name:	CLM 9 (CD300LG) (NM_001168323) Human Tagged ORF Clone
Tag:	Myc-DDK
Symbol:	CLM 9
Synonyms:	CLM-9; CLM9; NEPMUCIN; TREM-4; TREM4
Mammalian Cell Selection:	Neomycin
Vector:	pCMV6-Entry (PS100001)
E. coli Selection:	Kanamycin (25 ug/mL)
ORF Nucleotide Sequence:	>RC229805 representing NM_001168323 Red=Cloning site Blue=ORF Green=Tags(s)

TTTTGTAATACGACTCACTATAGGGCGGCCGGAATTCGTCGACTGGATCCGGTACCGAGGAGATCTGCC
GCC**CGATCGCC**

ATGCGGCTTCTGGTCTGCTATGGGGTTCCTGCTGCTCCAGGTTATGAAGCCCTGGAGGGCCAGAGG
AAATCAGCGGGTTCGAAGGGGACACTGTGTCCCTGCAGTGCACCTACAGGGAAGAGCTGAGGGACCACCG
GAAGTACTGGTGCAGGAAGGGTGGGATCCTTCTCTCGCTGCTCTGGCACCATCTATGCAGAAGAAGAA
GGCCAGGAGACAATGAAGGGCAGGGTGTCCATCCGTGACAGCCCGCAGGAGCTCTCGCTCATTGTGACCC
TGTGGAACCTCACCTGCAAGACGCTGGGGAGTACTGGTGTGGGGTCGAAAACGGGGCCCCGATGAGTC
TTTACTGATCTCTGTTTCGCTTTCCAGCTTCTCCTGGGCTCTACCCGGCAGCCACCACAGCCAAGCAG
GGGAAGACAGGGGCTGAGGCCCTCCATTGCCAGGGACTTCCCAGTACGGGCACGAAAGGACTTCTCAGT
ACACAGGAACCTCTCTCACCCAGCGACCTCTCCTCCTGCAGGGAGCTCCCGCCCCCATGCAGCTGGA
CTCCACCTCAGCAGAGGACACCAGTCCAGCTCTCAGCAGTGGCAGCTCTAAGCCCAGGGTGTCCATCCC
ATGGTCCGCACTGGCCCCAGTCTGGTGTGCTGAGCCTTCTGTGAGCCGAGGCTGATCGCCTTCT
GCAGCCACCTGCTCCTGTGGAGAAAGGAAGCTCAACAGGCCACGGAGACACAGAGGAACGAGAAGTTCTG
CCTCTCACGCTTGAACCTCCTGATGTTTTCTCTGAGCCTGCCTTGCTC

ACGCGTACGCGGCCGCTCGAGCAGAAACTCATCTCAGAAGAGGATCTGGCAGCAAATGATATCCTGGATT
ACAAGGATGACGACGATAAGGTTTAA



[View online »](#)

Reconstitution Method:

1. Centrifuge at 5,000xg for 5min.
2. Carefully open the tube and add 100ul of sterile water to dissolve the DNA.
3. Close the tube and incubate for 10 minutes at room temperature.
4. Briefly vortex the tube and then do a quick spin (less than 5000xg) to concentrate the liquid at the bottom.
5. Store the suspended plasmid at -20°C. The DNA is stable for at least one year from date of shipping when stored at -20°C.

RefSeq: [NM_001168323.2](#)

RefSeq ORF: 822 bp

Locus ID: 146894

UniProt ID: [Q6UXG3](#)

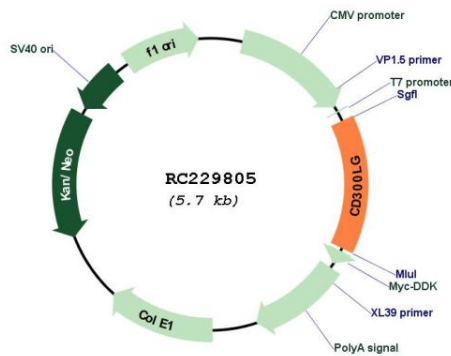
Cytogenetics: 17q21.31

Protein Families: Druggable Genome, Transmembrane

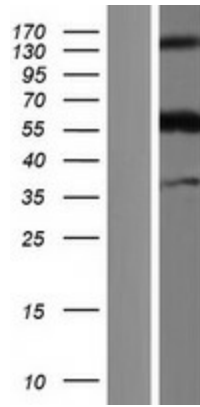
MW: 30.4 kDa

Gene Summary: Members of the CD300 (see MIM 606786)-like (CD300L) family, such as CD300LG, are widely expressed on hematopoietic cells. All CD300L proteins are type I cell surface glycoproteins that contain a single immunoglobulin (Ig) V-like domain (Takatsu et al., 2006 [PubMed 16876123]).[supplied by OMIM, Mar 2008]

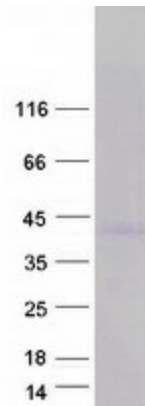
Product images:



Circular map for RC229805



Western blot validation of overexpression lysate (Cat# [LY432805]) using anti-DDK antibody (Cat# [TA50011-100]). Left: Cell lysates from untransfected HEK293T cells; Right: Cell lysates from HEK293T cells transfected with RC229805 using transfection reagent MegaTran 2.0 (Cat# [TT210002]).



Coomassie blue staining of purified CD300LG protein (Cat# [TP329805]). The protein was produced from HEK293T cells transfected with CD300LG cDNA clone (Cat# RC229805) using MegaTran 2.0 (Cat# [TT210002]).