

Product datasheet for RC229801

CITED2 (NM_001168388) Human Tagged ORF Clone

Product data:

Product Type:	Expression Plasmids
Product Name:	CITED2 (NM_001168388) Human Tagged ORF Clone
Tag:	Myc-DDK
Symbol:	CITED2
Synonyms:	ASD8; MRG-1; MRG1; P35SRJ; VSD2
Mammalian Cell Selection:	Neomycin
Vector:	pCMV6-Entry (PS100001)
E. coli Selection:	Kanamycin (25 ug/mL)
ORF Nucleotide Sequence:	>RC229801 representing NM_001168388 Red=Cloning site Blue=ORF Green=Tags(s)

TTTTGTAATACGACTCACTATAGGGCGGCCGGAATTCGTCGACTGGATCCGGTACCGAGGAGATCTGCC
GCC**CGATCGCC**

ATGGCAGACCATATGATGGCCATGAACCACGGGCGCTTCCCCGACGGCACCAATGGGCTGCACCATCACC
CTGCCACCGCATGGGCATGGGGCAGTTCGCGAGCCCCATCACCACCAGCAGCAGCCCCAGCAGC
CTTCAACGCCCTAATGGGCGAGCACATACTACGCGCGGGCAACATGAATGCCACGAGCGGCATCAGG
CATGCGATGGGGCCGGGACTGTGAACGGAGGGCACCCCCGAGCGCGCTGGCCCCGCGCCAGGTTTA
ACAACCCAGTTCATGGGTCCCCGGTGGCCAGCCAGGGAGGCTCCCTGCCGGCCAGCATGCAGCTGCA
GAAGCTCAACAACAGTATTTCAACCATACCCCTACCCCAACAACCACTACATGCCGGATTTGCACCT
GCTGCAGGCCACCAGATGAACGGGACAAACCAGCACTTCCGAGATTGCAACCCCAAGCACAGCGGGCA
GCAGCACCCCCGCGGCTCGGGCGGCAGCAGCACCCCCGCGGCTCTGGCAGCAGCTCGGGCGGGCGC
GGCAGCAGCAACAGCGGCGGGCAGCGGCAGCGGCAACATGCCCGCTCCGTGGCCACGTCCCCGCT
GCAATGCTGCCGCCAATGTCATAGACTGATTTTCATCGACGAGGAAGTTCTTATGTCCTTGGTGATAG
AAATGGGTTTGGACCGCATCAAGGAGCTGCCCGAACTCTGGTGGGGCAAACGAGTTTGATTTTATGAC
GGACTTCGTGTGCAAACAGCAGCCAGCAGAGTGAGCTGT

ACGCGTACGCGGCGCTCGAGCAGAACTCATCTCAGAAGAGGATCTGGCAGCAAATGATATCCTGGATT
ACAAGGATGACGACGATAAGGTTTAA



[View online »](#)

Protein Sequence: >RC229801 representing NM_001168388
Red=Cloning site Green=Tags(s)

MADHMMAMNHGRFPDGTNGLHHHPAHRMGMGQFPSPHHHQQQPQHAFNALMGEHIHYGAGNMNATSGIR
 HAMGPGTVNGGHPPSALAPAARFNNSQFMGPPVASQGGSLPASMQLQKLNNQYFNHHYPHNHYMPDLHP
 AAGHQMNGTNQHFRDCNPKHSGGSSTPGGSGGSSTPGGSGSSGGGAGSSNSGGGSGSGNMPASVAHVPA
 AMLPPNVIDTDFIDEEVLMSLVIEMGLDRIKELPELWLQNEFDFTDFVCKQQPSRVSC

TRTRPLEQKLISEEDLAANDILDYKDDDDKV

Chromatograms: https://cdn.origene.com/chromatograms/mk8048_d01.zip

Restriction Sites: SgfI-MluI

Cloning Scheme:

Cloning sites used for ORF Shuttling:



* The last codon before the Stop codon of the ORF

ACCN: NM_001168388

ORF Size: 810 bp

OTI Disclaimer: The molecular sequence of this clone aligns with the gene accession number as a point of reference only. However, individual transcript sequences of the same gene can differ through naturally occurring variations (e.g. polymorphisms), each with its own valid existence. This clone is substantially in agreement with the reference, but a complete review of all prevailing variants is recommended prior to use. [More info](#)

OTI Annotation: This clone was engineered to express the complete ORF with an expression tag. Expression varies depending on the nature of the gene.

Components: The ORF clone is ion-exchange column purified and shipped in a 2D barcoded Matrix tube containing 10ug of transfection-ready, dried plasmid DNA (reconstitute with 100 ul of water).

Reconstitution Method:

1. Centrifuge at 5,000xg for 5min.
2. Carefully open the tube and add 100ul of sterile water to dissolve the DNA.
3. Close the tube and incubate for 10 minutes at room temperature.
4. Briefly vortex the tube and then do a quick spin (less than 5000xg) to concentrate the liquid at the bottom.
5. Store the suspended plasmid at -20°C. The DNA is stable for at least one year from date of shipping when stored at -20°C.

RefSeq: [NM_001168388.2](#), [NP_001161860.1](#)

RefSeq ORF: 813 bp

Locus ID: 10370

UniProt ID: [Q99967](#)

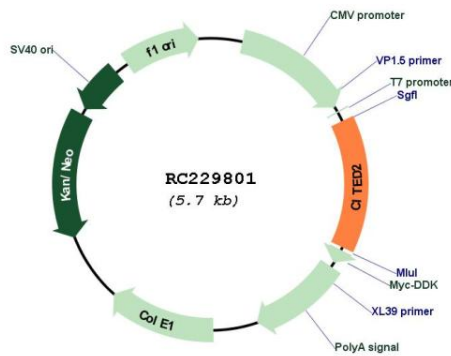
Cytogenetics: 6q24.1

Protein Families: Druggable Genome, Transcription Factors

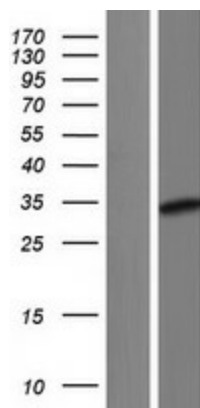
MW: 28.9 kDa

Gene Summary: The protein encoded by this gene inhibits transactivation of HIF1A-induced genes by competing with binding of hypoxia-inducible factor 1-alpha to p300-CH1. Mutations in this gene are a cause of cardiac septal defects. Alternatively spliced transcript variants encoding multiple isoforms have been observed for this gene. [provided by RefSeq, May 2012]

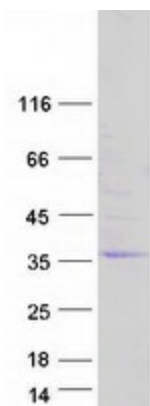
Product images:



Circular map for RC229801



Western blot validation of overexpression lysate (Cat# [LY432801]) using anti-DDK antibody (Cat# [TA50011-100]). Left: Cell lysates from untransfected HEK293T cells; Right: Cell lysates from HEK293T cells transfected with RC229801 using transfection reagent MegaTran 2.0 (Cat# [TT210002]).



Coomassie blue staining of purified CITED2 protein (Cat# [TP329801]). The protein was produced from HEK293T cells transfected with CITED2 cDNA clone (Cat# RC229801) using MegaTran 2.0 (Cat# [TT210002]).