

## Product datasheet for **RC229800**

### CFHR3 (NM\_001166624) Human Tagged ORF Clone

#### Product data:

**Product Type:** Expression Plasmids  
**Product Name:** CFHR3 (NM\_001166624) Human Tagged ORF Clone  
**Tag:** Myc-DDK  
**Symbol:** CFHR3  
**Synonyms:** CFHL3; DOWN16; FHR-3; FHR3; HLF4  
**Mammalian Cell Selection:** Neomycin  
**Vector:** pCMV6-Entry (PS100001)  
**E. coli Selection:** Kanamycin (25 ug/mL)  
**ORF Nucleotide Sequence:** >RC229800 representing NM\_001166624  
 Red=Cloning site Blue=ORF Green=Tags(s)

TTTTGTAATACGACTCACTATAGGGCGGCCGGAATTCGTCGACTGGATCCGGTACCGAGGAGATCTGCC  
 GCC**CGATCGC**C

ATGTTGTTACTAATCAATGTCATTCTGACCTTGTGGTTCCTGTGCTAATGGACAAGTAAACCTTGTG  
 ATTTCCAGACATTAACATGGAGGTCTATTTTCATGAGAATATGCGTAGACCATACTTTCCAGTAGCTGT  
 AGGAAAATATTACTCCTATTACTGTGATGAACATTTTGAGACTCCTTCAGGAAGTTACTGGGATTACATT  
 CATTGCACACAAAATGGGTGGTCACCAGCAGTACCATGTCTCAGAAAATGTTATTTTCCTTATTTGGAAA  
 ATGGATATAATCAAATATGGAAGAAAGTTTGTACAGGGTAACCTACAGAAGTTGCCTGCCATCCTGG  
 CTACGGTCTTCCAAAAGCGCAGACCACAGTTACATGTACGGAGAAAGGCTGGTCTCCTACTCCCAGATGC  
 ATCCGTGTCAATTCCTCAGAAAAGTGTGGGCTCCTCCACCTATTAGCAATGGTGATACCACCTCCTTTC  
 TACTAAAAGTGTATGTGCCACAGTCAAGAGTCGAGTACCAATGCCAGCCCTACTGAATTCAGGGTTC  
 TAATTATGTAACATGTAGTAATGGAGAGTGGTCGGAACCAAGATGCATACATCCATGTATAATAACT  
 GAAGAAAACATGAATAAAAAAACATAAAGTTAAAAGGAAGAAGTGACAGAAAATATTATGCAAAAACAG  
 GGGATACCATTGAATTTATGTGTAATTTGGGATATAATGCAAATACATCAATTCATTTCAAGCAGT  
 GTGTCGGAAGGGATAGTGAATACCCAGATGCGAA

**ACGCGT**ACGCGGCCGCTCGAGCAGAACTCATCTCAGAAGAGGATCTGGCAGCAAATGATATCCTGGATT  
 ACAAGGATGACGACGATAAGGTTTAA



[View online »](#)

**Protein Sequence:** >RC229800 representing NM\_001166624  
Red=Cloning site Green=Tags(s)

MLLLINVILTLWVSCANGQVKPCDFPDIKHGGLFHENMRRPYFPVAVGKYYSYCCDEHFETPSGSYWDYI  
 HCTQNGWSPA V PCLRKCYFPYLENGYNQNYGRKFVQGNSTE VACHPGYGLPKAQT TVTCTEKGWSPTPRC  
 IRVNSSEKCGPPPI SNGD TTSFLLKVVYPQSRVEYQCQPYE LQGSNYVTCSNGEWSEPPRCIHPCCIIT  
 EENMNKNNIKLRSDRKYAKTGDTIEFMCKLGYNANTSILSFQAVCREGIVEYPRCE

TRTRPLEQKLISEEDLAANDILDYKDDDDKV

**Chromatograms:** [https://cdn.origene.com/chromatograms/mk8048\\_c06.zip](https://cdn.origene.com/chromatograms/mk8048_c06.zip)

**Restriction Sites:** SgfI-MluI

**Cloning Scheme:**

Cloning sites used for ORF Shuttling:



\* The last codon before the Stop codon of the ORF

**ACCN:** NM\_001166624

**ORF Size:** 807 bp

**OTI Disclaimer:** The molecular sequence of this clone aligns with the gene accession number as a point of reference only. However, individual transcript sequences of the same gene can differ through naturally occurring variations (e.g. polymorphisms), each with its own valid existence. This clone is substantially in agreement with the reference, but a complete review of all prevailing variants is recommended prior to use. [More info](#)

**OTI Annotation:** This clone was engineered to express the complete ORF with an expression tag. Expression varies depending on the nature of the gene.

**Components:** The ORF clone is ion-exchange column purified and shipped in a 2D barcoded Matrix tube containing 10ug of transfection-ready, dried plasmid DNA (reconstitute with 100 ul of water).

**Reconstitution Method:**

1. Centrifuge at 5,000xg for 5min.
2. Carefully open the tube and add 100ul of sterile water to dissolve the DNA.
3. Close the tube and incubate for 10 minutes at room temperature.
4. Briefly vortex the tube and then do a quick spin (less than 5000xg) to concentrate the liquid at the bottom.
5. Store the suspended plasmid at -20°C. The DNA is stable for at least one year from date of shipping when stored at -20°C.

**RefSeq:** [NM\\_001166624.1](#), [NP\\_001160096.1](#)

**RefSeq ORF:** 810 bp

**Locus ID:** 10878

**UniProt ID:** [Q02985](#)

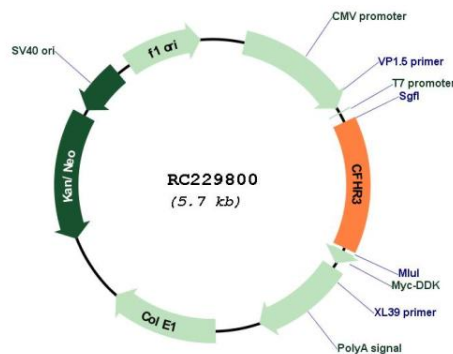
**Cytogenetics:** 1q31.3

**Protein Families:** Secreted Protein

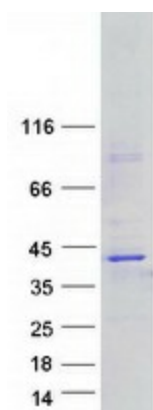
**MW:** 31.2 kDa

**Gene Summary:** The protein encoded by this gene is a secreted protein, which belongs to the complement factor H-related protein family. It binds to heparin, and may be involved in complement regulation. Mutations in this gene are associated with decreased risk of age-related macular degeneration, and with an increased risk of atypical hemolytic-uremic syndrome. Alternatively spliced transcript variants encoding different isoforms have been found for this gene. [provided by RefSeq, Oct 2011]

**Product images:**



Circular map for RC229800



Coomassie blue staining of purified CFHR3 protein (Cat# [TP329800]). The protein was produced from HEK293T cells transfected with CFHR3 cDNA clone (Cat# RC229800) using MegaTran 2.0 (Cat# [TT210002]).