

Product datasheet for **RC229781**

BEAN1 (NM_001178020) Human Tagged ORF Clone

Product data:

Product Type:	Expression Plasmids
Product Name:	BEAN1 (NM_001178020) Human Tagged ORF Clone
Tag:	Myc-DDK
Symbol:	BEAN1
Synonyms:	BEAN; SCA31
Mammalian Cell Selection:	Neomycin
Vector:	pCMV6-Entry (PS100001)
E. coli Selection:	Kanamycin (25 ug/mL)
ORF Nucleotide Sequence:	>RC229781 representing NM_001178020 Red=Cloning site Blue=ORF Green=Tags(s)

TTTGTAAATACGACTCACTATAGGGCGGCCGGAATTCGTCGACTGGATCCGGTACCGAGGAGATCTGCC
GCC**CGATCGC**

ATGTCCTTCAAACGTCCCTGCCCTTAGCACGATACAACCGCACCAGCTACTTCTACCCACATTCTCAG
AGAGCTCGGAGCACAGCCATCTGCTCGTGTCCCCGTGCTGGTGGCGAGTGCCGTCATAGGTGTGGTCAT
CATCCTCTCCTGCATCACCATCATTGTGGGCAGCATCCGACGGGACAGGCAGGCCCGGCTTCAGCGGCAC
CGCCACCGCCACCACCGCCACCACCACCACCATCATCACCGCCGGCGTCGACACCGAGAGTACGAGC
ACGGCTACGTGTCGGACGAGCACACATACAGCCGCTCAAGCCGACAGGATGCGCTATGCCTGCAGCTCCTC
AGAGGACTGGCCCCACCTTGGACATCAGCTCTGACGGGGACGTGGATGCCACGGTGCTCAGGGAGCTG
TACCCAGATTCTCCACCAGGCTACGAGGAGTGTGTGGGGCCAGGGGCCACTCAGCTGTATGTCCCCACGG
ACGCACCACCACCTACTCGCTGACTGATTCTGCCCCACGCTGGATGGACCTCCGACTCAGGCAGCGG
CCACAGCCCTGGCCGACACCAGCAGGAGCAGAGGACCCCGGCCAAGGTGGCCTTCACACGGTCTCCATG
GACACCTTCCCCCTACGAGGCTGTGTGCGGGCTGGCCCCCATCAGGCCTGCTGCCACTGCCGGGCC
CAGACCCAGGGCCAAGGGCTCCCAGGGCTACCCACCCCAACCCGGGCCACGCTCTGCCCCAGAGAG
GATTGTG

ACGCGTACGCGGCGCTCGAGCAGAACTCATCTCAGAAGAGGATCTGGCAGCAAATGATATCTGGATT
ACAAGGATGACGACGATAAGGTTTAA



[View online »](#)

Protein Sequence: >RC229781 representing NM_001178020
 Red=Cloning site Green=Tags(s)

MSFKRPCPLARYNRTSYFYPTFSESSEHSHLLVSPVLVASAVIGVVIILSCITIIIVGSIRDRQARLQRH
 RHRHRRHHHHHHRRRRHREYEHGYVSDHTYSRSSRMRYACSSSEDWPPPLDISSDGDVDATVLR
 YPDSPPGYEECVGPATQLYVPTDAPPPYSLTDCPTLDGTSDSGSGHSPGRHQEQRTPAQGGLHTVSM
 DTLPPYEAVCGAGPPSGLLPLGPDGPRGSQGSPTPTRAPASGPERIV

TRTRPLEQKLISEEDLAANDILDYKDDDDKV

Chromatograms: https://cdn.origene.com/chromatograms/mk8007_d12.zip

Restriction Sites: SgfI-MluI

Cloning Scheme:



ACCN: NM_001178020

ORF Size: 777 bp

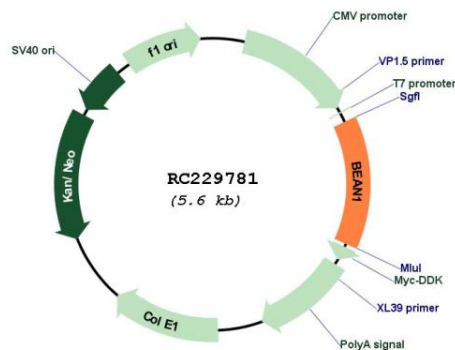
OTI Disclaimer: The molecular sequence of this clone aligns with the gene accession number as a point of reference only. However, individual transcript sequences of the same gene can differ through naturally occurring variations (e.g. polymorphisms), each with its own valid existence. This clone is substantially in agreement with the reference, but a complete review of all prevailing variants is recommended prior to use. [More info](#)

OTI Annotation: This clone was engineered to express the complete ORF with an expression tag. Expression varies depending on the nature of the gene.

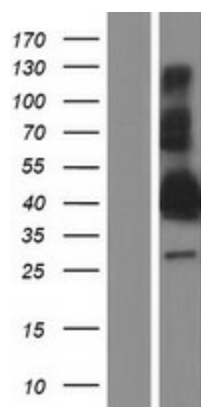
Components: The ORF clone is ion-exchange column purified and shipped in a 2D barcoded Matrix tube containing 10ug of transfection-ready, dried plasmid DNA (reconstitute with 100 ul of water).

Reconstitution Method:	<ol style="list-style-type: none"> 1. Centrifuge at 5,000xg for 5min. 2. Carefully open the tube and add 100ul of sterile water to dissolve the DNA. 3. Close the tube and incubate for 10 minutes at room temperature. 4. Briefly vortex the tube and then do a quick spin (less than 5000xg) to concentrate the liquid at the bottom. 5. Store the suspended plasmid at -20°C. The DNA is stable for at least one year from date of shipping when stored at -20°C.
Note:	Plasmids are not sterile. For experiments where strict sterility is required, filtration with 0.22um filter is required.
RefSeq:	<u>NM_001178020.3</u>
RefSeq ORF:	780 bp
Locus ID:	146227
UniProt ID:	<u>Q3B7T3</u>
Cytogenetics:	16q21
Protein Families:	Transmembrane
MW:	29.1 kDa
Gene Summary:	<p>The protein encoded by this gene is one of several proteins that interact with NEDD4, a member of a family of ubiquitin-protein ligases. These proteins have PY motifs in common that bind to the WW domains of NEDD4. NEDD4 is developmentally regulated, and is highly expressed in embryonic tissues. Mutations in this gene (i.e., intronic insertions of >100 copies of pentanucleotide repeats including a (TGGA)n sequence) are associated with spinocerebellar ataxia type 31. Alternatively spliced transcript variants encoding different isoforms have been found for this gene. [provided by RefSeq, May 2010]</p>

Product images:



Circular map for RC229781



Western blot validation of overexpression lysate (Cat# [LY432781]) using anti-DDK antibody (Cat# [TA50011-100]). Left: Cell lysates from un-transfected HEK293T cells; Right: Cell lysates from HEK293T cells transfected with RC229781 using transfection reagent MegaTran 2.0 (Cat# [TT210002]).