

Product datasheet for **RC229763**

FAM133A (NM_001171109) Human Tagged ORF Clone

Product data:

Product Type: Expression Plasmids
Product Name: FAM133A (NM_001171109) Human Tagged ORF Clone
Tag: Myc-DDK
Symbol: FAM133A
Synonyms: CT115
Mammalian Cell Selection: Neomycin
Vector: pCMV6-Entry (PS100001)
E. coli Selection: Kanamycin (25 ug/mL)
ORF Nucleotide Sequence: >RC229763 representing NM_001171109
Red=Cloning site Blue=ORF Green=Tags(s)

TTTTGTAATACGACTCACTATAGGGCGGCCGGAATTCGTCGACTGGATCCGGTACCGAGGAGATCTGCC
GCC**CGATCGCC**

ATGGGAAGCGGGATAATCGGGTAGCCTATATGAATCCTATAGCAATGGCCAGATGGAGAGGCCCAACTC
AATCTGTGGGCCCAACAATCCAAGATTATCTAAATCGACCAAGACCCACCTGGGAAGAAGTAAAGAAACA
ATTAGAAAATAAAAAACAGGTTCAAAGCATTAGCTGAATTTGAAGAAAAATGAATGAAAATTGGAAG
AAAGAACTTGAAAAAGCAGAGAGAAAATTATTAAGTGAAATGAGAGCTCATCTAAAAAAGAGAAAAGAA
AGAAAAAGAGAAAAGAAGAAATCTTGTCGGTCTTCATCTTCTTCATCAAGCTCTGATTCTTCAAGCAGTTC
TTCAGATTCTGAGGATGAGGAAAAGAAACAAGGAAAAGGAGAAAAGAAAAGAAGAACCGTTCATACAAA
TCATCCCAAAGCTCTACGCATGAATCAGAATCAGAGAGCAAGGAGTCTGTAAAAAAGAAAAGAAGTCAA
AGGATGAAAACAGAGAAAAGAAAGGATGTAAAGCCTCAGCAAAAAAGAAAAGAAAGTTACCCTGATGA
TAAACCTTTATCATCTGAGTCTCATCTGAATCAGATTATGAAGAGGATGTGCAAGCAAAAAAGAAGAGA
AGGTGTGAAGAGCGAGAACAAGCAAGGAAAAGTAAAGAAGAAGAAGAAGAAACAGCACAAAGAACATA
GTAAGAAGAAGAAAAGAAGTCTGGATCAAGTCACAAGTCAAGG

ACGCGTACGCGGCCGCTCGAGCAGAAACTCATCTCAGAAGAGGATCTGGCAGCAAATGATATCCTGGATT
ACAAGGATGACGACGATAAGGTTTAA



[View online »](#)

Protein Sequence: >RC229763 representing NM_001171109
Red=Cloning site Green=Tags(s)

MGKRDNRVAYMNP IAMARWRGPTQSVGPTIQDYLNRPRTWEEVKKQLENKKTGSKALAEFEEKMNNENWK
 KELEKSREKLLSGNESSKKRERKKRKRKSSSSSSSSSSSSSSSEDEEKKQKRRRKKKNNRSYK
 SSQSSTHESESESKESVKKKKKSKDETEKEKDVRSLSKRKKKSYPPDKPLSSESSSESDYEEEDVQAKKKR
 RCEEREQAKEKVKKKKKKQHKHSHKSKKKKSGSSSHKSR

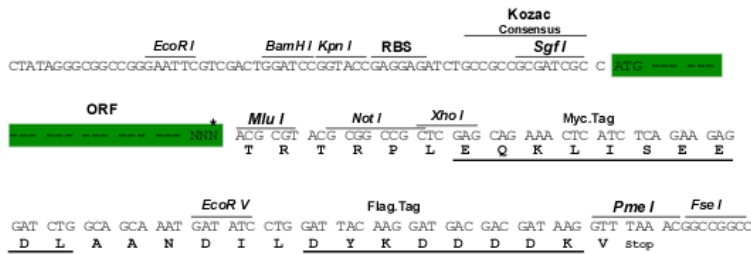
TRTRPLEQKLISEEDLAANDILDYKDDDDKV

Chromatograms: https://cdn.origene.com/chromatograms/ja1511_g09.zip

Restriction Sites: SgfI-MluI

Cloning Scheme:

Cloning sites used for ORF Shuttling:



* The last codon before the Stop codon of the ORF

ACCN: NM_001171109

ORF Size: 744 bp

OTI Disclaimer: The molecular sequence of this clone aligns with the gene accession number as a point of reference only. However, individual transcript sequences of the same gene can differ through naturally occurring variations (e.g. polymorphisms), each with its own valid existence. This clone is substantially in agreement with the reference, but a complete review of all prevailing variants is recommended prior to use. [More info](#)

OTI Annotation: This clone was engineered to express the complete ORF with an expression tag. Expression varies depending on the nature of the gene.

Components: The ORF clone is ion-exchange column purified and shipped in a 2D barcoded Matrix tube containing 10ug of transfection-ready, dried plasmid DNA (reconstitute with 100 ul of water).

- Reconstitution Method:**
1. Centrifuge at 5,000xg for 5min.
 2. Carefully open the tube and add 100ul of sterile water to dissolve the DNA.
 3. Close the tube and incubate for 10 minutes at room temperature.
 4. Briefly vortex the tube and then do a quick spin (less than 5000xg) to concentrate the liquid at the bottom.
 5. Store the suspended plasmid at -20°C. The DNA is stable for at least one year from date of shipping when stored at -20°C.

RefSeq: [NM_001171109.2](#)

RefSeq ORF: 747 bp

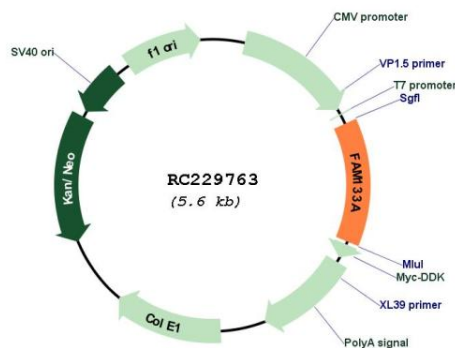
Locus ID: 286499

UniProt ID: [Q8N9E0](#)

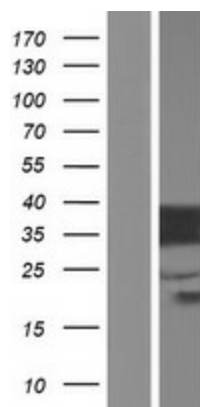
Cytogenetics: Xq21.32

MW: 29.4 kDa

Product images:



Circular map for RC229763



Western blot validation of overexpression lysate (Cat# [LY432763]) using anti-DDK antibody (Cat# [TA50011-100]). Left: Cell lysates from untransfected HEK293T cells; Right: Cell lysates from HEK293T cells transfected with RC229763 using transfection reagent MegaTran 2.0 (Cat# [TT210002]).