

## Product datasheet for **RC229756**

### Adiponectin (ADIPOQ) (NM\_001177800) Human Tagged ORF Clone

#### Product data:

Product Type:	Expression Plasmids
Product Name:	Adiponectin (ADIPOQ) (NM_001177800) Human Tagged ORF Clone
Tag:	Myc-DDK
Symbol:	Adiponectin
Synonyms:	ACDC; ACRP30; ADIPQTL1; ADPN; APM-1; APM1; GBP28
Mammalian Cell Selection:	Neomycin
Vector:	pCMV6-Entry (PS100001)
E. coli Selection:	Kanamycin (25 ug/mL)
ORF Nucleotide Sequence:	>RC229756 representing NM_001177800 Red=Cloning site Blue=ORF Green=Tags(s)

TTTTGTAATACGACTCACTATAGGGCGCCGGGAATTCGTCGACTGGATCCGGTACCGAGGAGATCTGCC  
GCC**CGATCGCC**

ATGCTGTTGCTGGGAGCTGTTCTACTGCTATTAGCTCTGCCGGTCATGACCAGGAAACCACGACTCAAG  
GGCCCGGAGTCTGCTTCCCTGCCAAGGGGGCCTGCACAGGTTGGATGGCGGGCATCCAGGGCATCC  
GGGCCAATATGGGGCCCCAGGCCGTGATGGCAGAGATGGCACCCCTGGTGAAGGGTGAAGAGGAGAT  
CCAGGTCTTATTGGTCTAAGGGAGACATCGGTGAAACCGGAGTACCCGGGGCTGAAGTCCCCGAGGCT  
TTCCGGGAATCCAAGGCAGGAAAGGAGAACCTGGAGAAGGTGCCTATGTATACCGCTCAGCATTAGTGT  
GGGATTGGAGACTTACGTTACTATCCCCAACATGCCATTTCGCTTACCAAGATCTTCTACAATCAGCAA  
AACCACTATGATGGCTCCACTGGTAAATTCCACTGCAACATTCCTGGGCTGTAATACTTTGCCTACCACA  
TCACAGTCTATATGAAGGATGTGAAGGTCAGCCTCTTCAAGAAGGACAAGGCTATGCTCTTACCTATGA  
TCAGTACCAGGAAAATAATGTGGACCAGGCCTCCGGCTCTGTGCTCCTGCATCTGGAGGTGGCGACCAA  
GTCTGGCTCCAGGTGATGGGGAAGGAGAGCGTAATGGACTCTATGCTGATAATGACAATGACTCCACCT  
TCACAGGCTTTCTCTACCATGACACCAAC

**ACGCGT**ACGCGGCCGCTCGAGCAGAAACTCATCTCAGAAGAGGATCTGGCAGCAAATGATATCCTGGATT  
ACAAGGATGACGACGATAAGGTTTAA



[View online »](#)

**Protein Sequence:** >RC229756 representing NM\_001177800  
Red=Cloning site Green=Tags(s)

MLLLGAVLLLLALPGHDQETTTQGPVLLPLPKGACTGWMAGIPGHPGHNGAPGRDGRDGTTPGEKGEKGD  
 PGLIGPKGDIGETGVPGAEGPRGFPGIQGRKGEPEGAYVYRASFVSGLETYYVTIPNMPIRFTKIFYNQQ  
 NHYDGTGSKFHFNIPGLYYFAYHITVYMKDVVSLFKKDKAMLFITYDQYQENNVDQASGSVLLHLEVDGQ  
 VWLQVYGEGERNGLYADNDNDSTFTGFLLYHDTN

TRTRPLEQKLISEEDLAANDILDYKDDDDKV

**Chromatograms:** [https://cdn.origene.com/chromatograms/ja1498\\_d09.zip](https://cdn.origene.com/chromatograms/ja1498_d09.zip)

**Restriction Sites:** SgfI-MluI

**Cloning Scheme:**

Cloning sites used for ORF Shuttling:



\* The last codon before the Stop codon of the ORF

**ACCN:** NM\_001177800

**ORF Size:** 732 bp

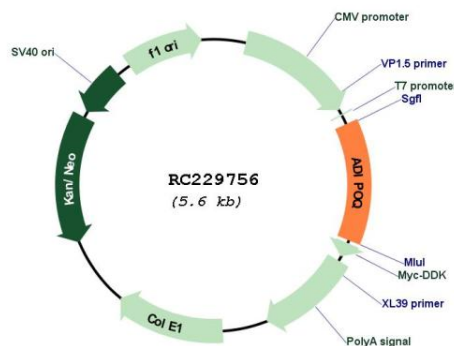
**OTI Disclaimer:** Due to the inherent nature of this plasmid, standard methods to replicate additional amounts of DNA in E. coli are highly likely to result in mutations and/or rearrangements. Therefore, OriGene does not guarantee the capability to replicate this plasmid DNA. Additional amounts of DNA can be purchased from OriGene with batch-specific, full-sequence verification at a reduced cost. Please contact our customer care team at [custsupport@origene.com](mailto:custsupport@origene.com) or by calling 301.340.3188 option 3 for pricing and delivery.

The molecular sequence of this clone aligns with the gene accession number as a point of reference only. However, individual transcript sequences of the same gene can differ through naturally occurring variations (e.g. polymorphisms), each with its own valid existence. This clone is substantially in agreement with the reference, but a complete review of all prevailing variants is recommended prior to use. [More info](#)

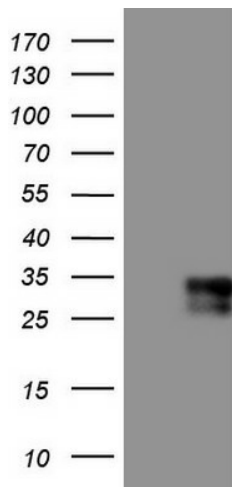
**OTI Annotation:** This clone was engineered to express the complete ORF with an expression tag. Expression varies depending on the nature of the gene.

<b>Components:</b>	The ORF clone is ion-exchange column purified and shipped in a 2D barcoded Matrix tube containing 10ug of transfection-ready, dried plasmid DNA (reconstitute with 100 ul of water).
<b>Reconstitution Method:</b>	<ol style="list-style-type: none"> <li>1. Centrifuge at 5,000xg for 5min.</li> <li>2. Carefully open the tube and add 100ul of sterile water to dissolve the DNA.</li> <li>3. Close the tube and incubate for 10 minutes at room temperature.</li> <li>4. Briefly vortex the tube and then do a quick spin (less than 5000xg) to concentrate the liquid at the bottom.</li> <li>5. Store the suspended plasmid at -20°C. The DNA is stable for at least one year from date of shipping when stored at -20°C.</li> </ol>
<b>RefSeq:</b>	<u>NM_001177800.2</u>
<b>RefSeq ORF:</b>	735 bp
<b>Locus ID:</b>	9370
<b>UniProt ID:</b>	<u>Q15848</u>
<b>Cytogenetics:</b>	3q27.3
<b>Protein Families:</b>	Druggable Genome, Secreted Protein
<b>Protein Pathways:</b>	Adipocytokine signaling pathway, PPAR signaling pathway, Type II diabetes mellitus
<b>MW:</b>	26.9 kDa
<b>Gene Summary:</b>	This gene is expressed in adipose tissue exclusively. It encodes a protein with similarity to collagens X and VIII and complement factor C1q. The encoded protein circulates in the plasma and is involved with metabolic and hormonal processes. Mutations in this gene are associated with adiponectin deficiency. Multiple alternatively spliced variants, encoding the same protein, have been identified. [provided by RefSeq, Apr 2010]

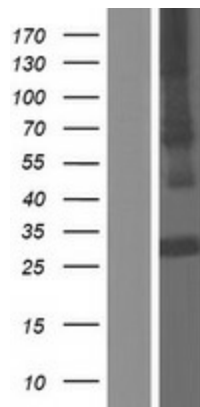
### Product images:



Circular map for RC229756



HEK293T cells were transfected with the pCMV6-ENTRY control (Cat# [PS100001], Left lane) or pCMV6-ENTRY ADIPOQ (Cat# RC229756, Right lane) cDNA for 48 hrs and lysed. Equivalent amounts of cell lysates (5 ug per lane) were separated by SDS-PAGE and immunoblotted with anti-ADIPOQ (Cat# [TA804768]). Positive lysates [LY432756] (100ug) and [LC432756] (20ug) can be purchased separately from OriGene.



Western blot validation of overexpression lysate (Cat# [LY432756]) using anti-DDK antibody (Cat# [TA50011-100]). Left: Cell lysates from untransfected HEK293T cells; Right: Cell lysates from HEK293T cells transfected with RC229756 using transfection reagent MegaTran 2.0 (Cat# [TT210002]).