

## Product datasheet for **RC229741**

### FCRLM1 (FCRLA) (NM\_001184872) Human Tagged ORF Clone

#### Product data:

Product Type:	Expression Plasmids
Product Name:	FCRLM1 (FCRLA) (NM_001184872) Human Tagged ORF Clone
Tag:	Myc-DDK
Symbol:	FCRLM1
Synonyms:	FCRL; FCRL1; FCRLb; FCRLc1; FCRLc2; FCRLd; FCRLe; FCRLM1; FCRLX; FCRX; FREQ
Mammalian Cell Selection:	Neomycin
Vector:	pCMV6-Entry (PS100001)
E. coli Selection:	Kanamycin (25 ug/mL)
ORF Nucleotide Sequence:	>RC229741 representing NM_001184872 Red=Cloning site Blue=ORF Green=Tags(s)

TTTTGTAATACGACTCACTATAGGGCGCCGGGAATTCGTCGACTGGATCCGGTACCGAGGAGATCTGCC  
GCC**CGATCGCC**

ATGTTGAAGAAAATCAGTGTGGGGTTCAGGAGACCTAAACACAGTCACCATGAAGCTGGGCTGTGTCC  
TCATGGCCTGGGCCCTACCTTTCCCTTGGTGTGCTCTGGTGGCCAGATGCTACTGAACTGTTTCC  
AGCGCAATTCTCAGAGCTGTACCCTCAGCTGAACCCCAAGCAGGAAGCCCATGACCCTGAGTTGTCAG  
ACAAAGTTGCCCTGCAGAGGTCAGCTGCCCGCTCCTTCTCCTTCTACAAGGATGGAAGGATAGTGC  
AAAGCAGGGGGCTCTCCTCAGAATTCAGATCCCACAGCTTCAGAAGATCACTCCGGGTCATACTGGT  
TGAGGCAGCCACTGAGGACAACCAAGTTTGGAAACAGAGCCCCAGCTAGAGATCAGAGTGCAGGGTGT  
TCCAGCTCTGCTGCACCTCCCACATTGAATCCAGCTCCTCAGAAATCAGCTGCTCCAGGAACTGCTCCT  
AGGAGGCCCTGGGCTCTGCCTCCGCCGCAACCCCATCTTCTGAGGATCCAGGCTTTTCTTCTCCTCT  
GGGATGCCAGATCCTCATCTGTATCACCAGATGGGCTTCTTCTCAAACACATGCAGGATGTGAGAGTC  
CTCCTCGGTCACCTGCTCATGGAGTTGAGGGAATTATCTGGCCACCGGAAGCTGGGACCACAAAGGCTA  
CTGCTGAA

**ACGCGT**ACGCGGCCGCTCGAGCAGAAACTCATCTCAGAAGAGGATCTGGCAGCAAATGATATCCTGGATT  
ACAAGGATGACGACGATAAGGTTTAA



[View online »](#)

**Protein Sequence:** >RC229741 representing NM\_001184872  
Red=Cloning site Green=Tags(s)

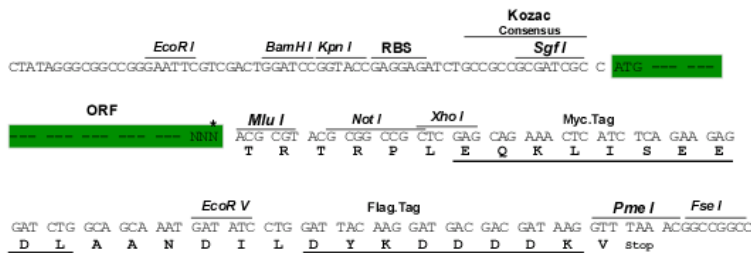
MLKKISVGVAGDLNTVTMKLGCVLMAWALYL SLGVLWVAQMLLELFPAPILRAVPSAEPQAGSPMTLSCQ  
 TKLPLQRSARLLFSFYKDGRIVQSRGLSSEFQIPTASEDHSGSYWCEAATEDNQVWKQSPQLEIRVQGA  
 SSSAAPPTLNPAPQKSAAPGTAPEEAPGPLPPPPTPSSSEDPGFSSPLGMPDPLH YHQMGLLLKHMQDVRV  
 LLGHLLMELRELSGHRKPGTTKATAE

TRTRPLEQKLISEEDLAANDILDYKDDDDKV

**Restriction Sites:** Sgfl-MluI

**Cloning Scheme:**

Cloning sites used for ORF Shuttling:



**ACCN:** NM\_001184872

**ORF Size:** 708 bp

**OTI Disclaimer:** The molecular sequence of this clone aligns with the gene accession number as a point of reference only. However, individual transcript sequences of the same gene can differ through naturally occurring variations (e.g. polymorphisms), each with its own valid existence. This clone is substantially in agreement with the reference, but a complete review of all prevailing variants is recommended prior to use. [More info](#)

**OTI Annotation:** This clone was engineered to express the complete ORF with an expression tag. Expression varies depending on the nature of the gene.

**Components:** The ORF clone is ion-exchange column purified and shipped in a 2D barcoded Matrix tube containing 10ug of transfection-ready, dried plasmid DNA (reconstitute with 100 ul of water).

**Reconstitution Method:**

1. Centrifuge at 5,000xg for 5min.
2. Carefully open the tube and add 100ul of sterile water to dissolve the DNA.
3. Close the tube and incubate for 10 minutes at room temperature.
4. Briefly vortex the tube and then do a quick spin (less than 5000xg) to concentrate the liquid at the bottom.
5. Store the suspended plasmid at -20°C. The DNA is stable for at least one year from date of shipping when stored at -20°C.

**RefSeq:** [NM\\_001184872.1](#), [NP\\_001171801.1](#)

**RefSeq ORF:** 660 bp

**Locus ID:** 84824

**UniProt ID:** [Q7L513](#)

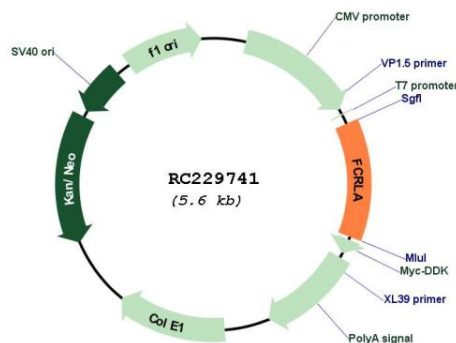
**Cytogenetics:** 1q23.3

**Protein Families:** Secreted Protein, Transmembrane

**MW:** 25.8 kDa

**Gene Summary:** This gene encodes a protein similar to receptors for the Fc fragment of gamma immunoglobulin (IgG). These receptors, referred to as FCGRs, mediate the destruction of IgG-coated antigens and of cells induced by antibodies. This encoded protein is selectively expressed in B cells, and may be involved in their development. This protein may also be involved in the development of lymphomas. Multiple alternatively spliced transcript variants that encode different protein isoforms have been described for this gene. [provided by RefSeq, Aug 2011]

### Product images:



Circular map for RC229741