

Product datasheet for RC229730

Clathrin light chain (CLTA) (NM_001184760) Human Tagged ORF Clone

Product data:

Product Type:	Expression Plasmids
Product Name:	Clathrin light chain (CLTA) (NM_001184760) Human Tagged ORF Clone
Tag:	Myc-DDK
Symbol:	Clathrin light chain
Synonyms:	LCA
Mammalian Cell Selection:	Neomycin
Vector:	pCMV6-Entry (PS100001)
E. coli Selection:	Kanamycin (25 ug/mL)
ORF Nucleotide Sequence:	>RC229730 representing NM_001184760 Red=Cloning site Blue=ORF Green=Tags(s)

TTTTGTAATACGACTCACTATAGGGCGGCCGGAATTCGTCGACTGGATCCGGTACCGAGGAGATCTGCC
GCC**CGATCGCC**

ATGGCTGAGCTGGATCCGTTTCGGCGCCCTGCCGGCGCCCTGGCGGTCCCGCGCTGGGAAACGGAGTGG
CCGGCGCCGGCGAAGAAGACCCGGCTGCGGCTTCTTGGCGCAGCAAGAGAGCGAGATTGCGGGCATCGA
GAACGACGAGGCTTCGCCATCCTGGACGGCGGCCCGCCCGGCCAGCCGCACGGCGAGCCGCGGGG
GGTCCGGATGCTGTTGATGGAGTAATGAATGGTGAATACTACCAGGAAAGTAATGGTCCAACAGACAGTT
ATGCAGCTATTTACAAGTGGATCGATTGCAGTCAGAGCCTGAAAGTATCCGTAATGGAGAGAAGAACA
AATGGAACGCTTGAAGCCCTTGATGCCAATTCTCGGAAGCAAGAAGCAGAGTGGAAAGAAAAGGCAATA
AAGGAGCTAGAAGATGGTATGCAAGACAGGACGAGCAGCTACAGAAAACAAAAGCAAACAACAGCACAA
ACATAAACCATCCTTGCTACAGCCTAGAACAGGCAGCAGAAGAAGCCTTTGTAATGACATTGACGAGTC
GTCCCCAGGCACTGAGTGGAAACGGGTGGCCCGGCTGTGTGACTTTAACCCCAAGTCTAGCAAGCAGGCC
AAAGATGTCTCCCGCATGCGCTCAGTCTCATCTCCCTCAAGCAGGCCCGCTGGTGCAC

ACGCGTACGCGGCGCTCGAGCAGAACTCATCTCAGAAGAGGATCTGGCAGCAAATGATATCTGGATT
ACAAGGATGACGACGATAAGGTTTAA



[View online »](#)

Protein Sequence: >RC229730 representing NM_001184760
Red=Cloning site Green=Tags(s)

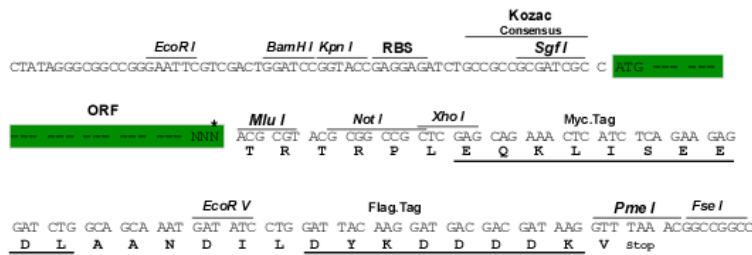
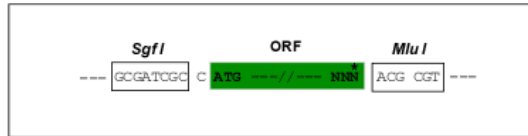
MAELDPFGAPAGAPGGPALGNVAGAGEEDPAAFLAQQESEIAGIENDEAFAILDGGAPGPQPHGEP
 GPDVDGVMNGEYYQESNGPTDSYAAISQVDRLQSEPE S I R K W R E E Q M E R L E A L D A N S R K Q E A E W K E K A I
 K E L E E W Y A R Q D E Q L Q K T K A N N S T N I N H P C Y S L E Q A A E E A F V N D I D E S S P G T E W E R V A R L C D F N P K S S K Q A
 K D V S R M R S V L I S L K Q A P L V H

TRTRPLEQKLISEEDLAANDILDYKDDDDKV

Restriction Sites: SgfI-MluI

Cloning Scheme:

Cloning sites used for ORF Shuttling:



ACCN: NM_001184760

ORF Size: 690 bp

OTI Disclaimer: The molecular sequence of this clone aligns with the gene accession number as a point of reference only. However, individual transcript sequences of the same gene can differ through naturally occurring variations (e.g. polymorphisms), each with its own valid existence. This clone is substantially in agreement with the reference, but a complete review of all prevailing variants is recommended prior to use. [More info](#)

OTI Annotation: This clone was engineered to express the complete ORF with an expression tag. Expression varies depending on the nature of the gene.

Components: The ORF clone is ion-exchange column purified and shipped in a 2D barcoded Matrix tube containing 10ug of transfection-ready, dried plasmid DNA (reconstitute with 100 ul of water).

Reconstitution Method:

1. Centrifuge at 5,000xg for 5min.
2. Carefully open the tube and add 100ul of sterile water to dissolve the DNA.
3. Close the tube and incubate for 10 minutes at room temperature.
4. Briefly vortex the tube and then do a quick spin (less than 5000xg) to concentrate the liquid at the bottom.
5. Store the suspended plasmid at -20°C. The DNA is stable for at least one year from date of shipping when stored at -20°C.

RefSeq: [NM_001184760.2](#)

RefSeq ORF: 693 bp

Locus ID: 1211

UniProt ID: [P09496](#)

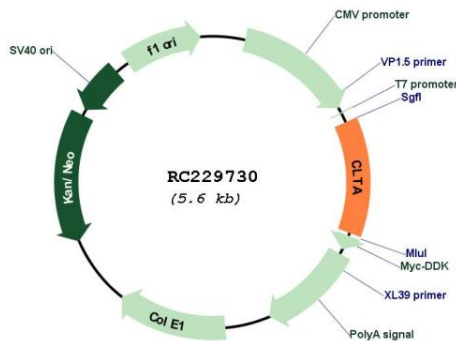
Cytogenetics: 9p13.3

Protein Pathways: Endocytosis, Huntington's disease, Lysosome

MW: 25.4 kDa

Gene Summary: Clathrin is a large, soluble protein composed of heavy and light chains. It functions as the main structural component of the lattice-type cytoplasmic face of coated pits and vesicles which entrap specific macromolecules during receptor-mediated endocytosis. This gene encodes one of two clathrin light chain proteins which are believed to function as regulatory elements. Alternative splicing results in multiple transcript variants. Related pseudogenes have been identified on chromosomes 8 and 12. [provided by RefSeq, May 2010]

Product images:



Circular map for RC229730