

Product datasheet for **RC229726**

FAM3A (NM_001171132) Human Tagged ORF Clone

Product data:

Product Type: Expression Plasmids
Product Name: FAM3A (NM_001171132) Human Tagged ORF Clone
Tag: Myc-DDK
Symbol: FAM3A
Synonyms: 2.19; DLD; DXS560S; XAP-7
Vector: pCMV6-Entry (PS100001)
E. coli Selection: Kanamycin (25 ug/mL)
Cell Selection: Neomycin
ORF Nucleotide Sequence: >RC229726 representing NM_001171132
Red=Cloning site Blue=ORF Green=Tags(s)

TTTTGTAATACGACTCACTATAGGGCGGCCGGAATTCGTCGACTGGATCCGGTACCGAGGAGATCTGCC
GCC**CGATCGCC**

ATGAGGTTGGCAGGCCCTCTCCGATTGTGGTCTAGTCGTGAGTGGGTGTCACATGGATCGTGGTCA
GCATCCTCCTGGGTGGGCTGGCAGTGGCTTTCCTCGCATCCAGCAACTTTCACCAGTCCAGAGAGCTC
GGTACTGCAGCGCCACGGCCAGGAAGTACAAGTGTGGCTGCCAGCCGTGCTCTGAGGAGCACCTG
GCCTCCGCGTGGTCAGCGGGCCGCAACGTCATTGGGCCAAGATCTGCCTCGAGGACAAGATGCTGA
TGAGCAGCGTCAAGGACAACGTGGGCCGCGGGTGAACATCGCCCTGGTGAACGGGTGACGCGCGAGCT
CATCGAGGCCCGGCCCTTTGACATGTGGGCCGGAGATGTCAACGACCTGTTGAAGTTTATTCGGCCACTG
CACGAAGGCACCCTGGTGTTCGTGGCATCCTACGACGCCAGCCACCAAGATGAATGAAGAGACCAGAA
AGCTCTTCAGTGAGCTGGGCAGCAGGAACGCCAAGGAGCTGGCCTCCGGGACAGCTGGGTGTTTGTGCG
GGCCAAGGTGTGCAGAACAGAGCCCCCTTGGAGCAGCACGTGAAGAAGAGTAAGCACAGCAACAAGTAC
GAAGGCTGGCCCGAGGCGCTGGAGATGGAAGGCTGTATCCCGCGGAGAAGCACGGCCAGC

ACGCGTACGCGGCCGCTCGAGCAGAACTCATCTCAGAAGAGGATCTGGCAGCAAATGATATCCTGGATT
ACAAGGATGACGACGATAAGGTTTAA



[View online »](#)

Protein Sequence: >RC229726 representing NM_001171132
 Red=Cloning site Green=Tags(s)

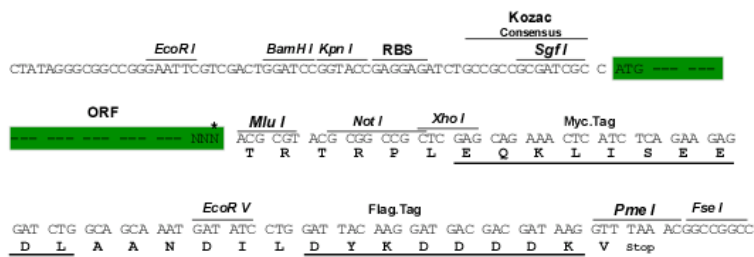
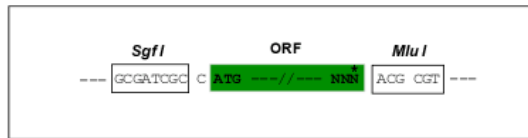
MRLAGPLRIVVLVVSIVGVTWIVVSIILLGGPGSGFPRIQQLFTSPSSVTAAPRARKYKCGLPQPCPEEHL
 AFRVVSQAANVIGPKICLEDKMLMSSVKDNVGRGLNIALVNGVSGELIEARAFDMWAGDVNDLLKFI RPL
 HEGTLVFVASYDDPATKMNEETRKLFLSELGRNAKELAFRDSWVFGAKGVQNKSPFEQHVKNKSHSNKY
 EGWPEALEMEGCIPRRSTAS

TRTRPLEQKLISEEDLAANDILDYKDDDDKV

Restriction Sites: Sgfl-MluI

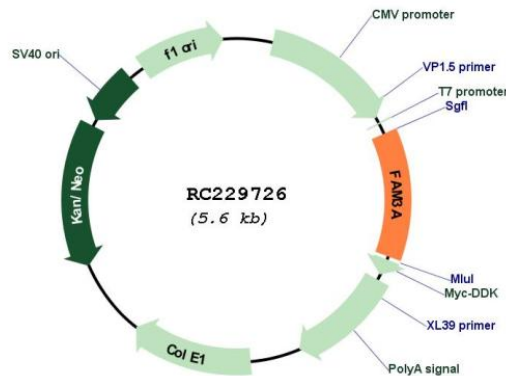
Cloning Scheme:

Cloning sites used for ORF Shuttling:



* The last codon before the Stop codon of the ORF

Plasmid Map:



ACCN: NM_001171132

ORF Size: 690 bp

OTI Disclaimer:	The molecular sequence of this clone aligns with the gene accession number as a point of reference only. However, individual transcript sequences of the same gene can differ through naturally occurring variations (e.g. polymorphisms), each with its own valid existence. This clone is substantially in agreement with the reference, but a complete review of all prevailing variants is recommended prior to use. More info
OTI Annotation:	This clone was engineered to express the complete ORF with an expression tag. Expression varies depending on the nature of the gene.
Components:	The ORF clone is ion-exchange column purified and shipped in a 2D barcoded Matrix tube containing 10ug of transfection-ready, dried plasmid DNA (reconstitute with 100 ul of water).
Reconstitution Method:	<ol style="list-style-type: none">1. Centrifuge at 5,000xg for 5min.2. Carefully open the tube and add 100ul of sterile water to dissolve the DNA.3. Close the tube and incubate for 10 minutes at room temperature.4. Briefly vortex the tube and then do a quick spin (less than 5000xg) to concentrate the liquid at the bottom.5. Store the suspended plasmid at -20°C. The DNA is stable for at least one year from date of shipping when stored at -20°C.
RefSeq:	NM_001171132.3
RefSeq ORF:	693 bp
Locus ID:	60343
UniProt ID:	P98173
Cytogenetics:	Xq28
Protein Families:	Secreted Protein, Transmembrane
MW:	25.6 kDa
Gene Summary:	This gene encodes a cytokine-like protein. The expression of this gene may be regulated by peroxisome proliferator-activated receptor gamma, and the encoded protein may be involved in the regulation of glucose and lipid metabolism. Alternative splicing results in multiple transcript variants. [provided by RefSeq, Aug 2013]