

Product datasheet for **RC229724**

C1orf86 (FAAP20) (NM_001146310) Human Tagged ORF Clone

Product data:

Product Type: Expression Plasmids
Product Name: C1orf86 (FAAP20) (NM_001146310) Human Tagged ORF Clone
Tag: Myc-DDK
Symbol: C1orf86
Synonyms: C1orf86; FP7162
Mammalian Cell Selection: Neomycin
Vector: pCMV6-Entry (PS100001)
E. coli Selection: Kanamycin (25 ug/mL)
ORF Nucleotide Sequence: >RC229724 representing NM_001146310
Red=Cloning site Blue=ORF Green=Tags(s)

TTTTGTAATACGACTCACTATAGGGCGGCCGGAATTCGTCGACTGGATCCGGTACCGAGGAGATCTGCC
GCC**CGATCGCC**

ATGCACCAAGCACAGTTTCCTATGACAAGTGAAACCTGTGCGCCACAGCAAACTCCGTCACCACAGCA
GCAGATGGCTCCGAAGAAGTGGAGCGTTTTTCATCAGGTTCAACTTTGAAACCTCCACCATCACCATCACC
AGCACCCTGTGTCATGCTGATAACTTGAGGACAGGCAGGACAAGGAGCCAGGTGCGGCCCGGAGCCCA
CTGAAGTCTTCACTGTCGACCCAAGACCTTTTCTGGACACCTTTCCGCCGGACCTGTGGGGCCCGGG
CCGTTCTACCGCTGCTTCACGGGGCAGGAGGGCACCTGGAATCCCCCGCCAGGTCCTGCCCCAGCGC
CCGGCACCTGATCCCTGCAGGGCCCCAGGGTGGAGCAGCAGCCGTCTGTGGAGGGTGCCGCGGCCCTGC
GCAGCTGCCCCATGTGCCAGAAGGAGTTCGCCCCAGGTACTTCAACTCCCGCCCCACCTGTGTCCCGC
TGGCTCCTAAGCTGCCCCCTACGTGTGGGTTGCGTCTGAGATGTGGGGCAGGCGCCACTCACGGAAAAA
AGGCATCAGAGGAGCTTCCACATCATCGGAACATTTTATTCCTCAGGACGCTACACGCTCACTTCTCTGG
CGGAGCAGGTCAGTGCATCGAGTTCTGTTCCGTGAAAATGTGCACCTTGAAAACCGCA

ACGCGTACGCGGGCCGCTCGAGCAGAACTCATCTCAGAAGAGGATCTGGCAGCAATGATATCCTGGATT
ACAAGGATGACGACGATAAGGTTTAA



[View online »](#)

Protein Sequence: >RC229724 representing NM_001146310
 Red=Cloning site Green=Tags(s)

MHQAQFPMTSGNLCATAKLRHHSSRWLRRSGAFSSGSTLKPPSPSPAPLCHADNLRTRTRSPGAARSP
 LKSSLSDPRPFGHPFRRTCGARAVPTGCFTGQEGTWNPPPGPCPSARHLIPAGPPGWSSSRLWRVPRPC
 AAAPCARRSSPPGTSTPAPTCVPLAPKLPYVWVASEMWGRRHSRKKGIRGASTSSEHFIPQDATRSLSW
 RSRSVHRVLFPWKMCTLETA

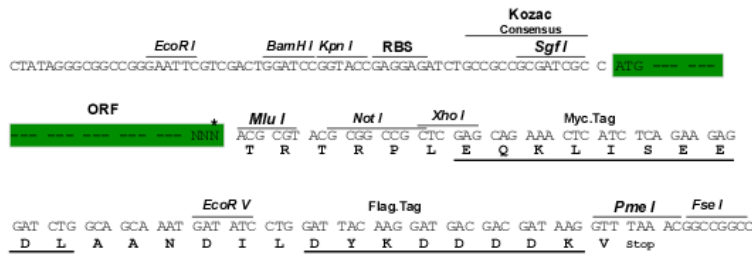
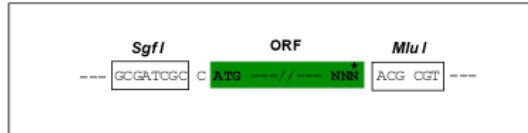
TRTRPLEQKLISEEDLAANDILDYKDDDDKV

Chromatograms: https://cdn.origene.com/chromatograms/mk8036_h01.zip

Restriction Sites: SgfI-MluI

Cloning Scheme:

Cloning sites used for ORF Shuttling:



* The last codon before the Stop codon of the ORF

ACCN: NM_001146310

ORF Size: 690 bp

OTI Disclaimer: The molecular sequence of this clone aligns with the gene accession number as a point of reference only. However, individual transcript sequences of the same gene can differ through naturally occurring variations (e.g. polymorphisms), each with its own valid existence. This clone is substantially in agreement with the reference, but a complete review of all prevailing variants is recommended prior to use. [More info](#)

OTI Annotation: This clone was engineered to express the complete ORF with an expression tag. Expression varies depending on the nature of the gene.

Components: The ORF clone is ion-exchange column purified and shipped in a 2D barcoded Matrix tube containing 10ug of transfection-ready, dried plasmid DNA (reconstitute with 100 ul of water).

Reconstitution Method:

1. Centrifuge at 5,000xg for 5min.
2. Carefully open the tube and add 100ul of sterile water to dissolve the DNA.
3. Close the tube and incubate for 10 minutes at room temperature.
4. Briefly vortex the tube and then do a quick spin (less than 5000xg) to concentrate the liquid at the bottom.
5. Store the suspended plasmid at -20°C. The DNA is stable for at least one year from date of shipping when stored at -20°C.

RefSeq: [NM_001146310.1](#), [NP_001139782.1](#)

RefSeq ORF: 693 bp

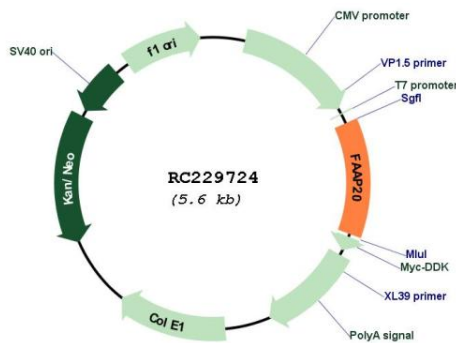
Locus ID: 199990

Cytogenetics: 1p36.33

MW: 25.4 kDa

Gene Summary: Component of the Fanconi anemia (FA) complex required to recruit the FA complex to DNA interstrand cross-links (ICLs) and promote ICLs repair. Following DNA damage recognizes and binds 'Lys-63'-linked ubiquitin generated by RNF8 at ICLs and recruits other components of the FA complex. Promotes translesion synthesis via interaction with REV1. [UniProtKB/Swiss-Prot Function]

Product images:



Circular map for RC229724