

Product datasheet for **RC229718**

PLSCR4 (NM_001177304) Human Tagged ORF Clone

Product data:

Product Type:	Expression Plasmids
Product Name:	PLSCR4 (NM_001177304) Human Tagged ORF Clone
Tag:	Myc-DDK
Symbol:	PLSCR4
Synonyms:	TRA1
Mammalian Cell Selection:	Neomycin
Vector:	pCMV6-Entry (PS100001)
E. coli Selection:	Kanamycin (25 ug/mL)
ORF Nucleotide Sequence:	>RC229718 representing NM_001177304 Red=Cloning site Blue=ORF Green=Tags(s)

TTTTGTAATACGACTCACTATAGGGCGGCCGGAATTCGTCGACTGGATCCGGTACCGAGGAGATCTGCC
GCC**CGATCGCC**

ATGAAAAATCAAACAAAACCACCAGATCCAAGGCCTGATGCTCCTCCTGAATACAATTCTCATTTTTTAC
CAGGACCCCTGGAACAGCTGTCCCTCCACCTACTGGCTACCCAGGAGGCTTGCCTATGGGATACTACAG
TCCACAGCAACCCAGTACCTTCCCTTTGTACCAGCCAGTTGGTGGTATCCATCCTGTCCGGTATCAGCCT
GGCAAATATCCTATGCCAAATCAGTCTGTTCCAATAACATGGATGCCAGGCCAACTCCTATGGCAAAT
GCCCTCCTGGTCTGGAATACTTAGTTAGCTGGAGGTGCAGTGTCTCCTGGTGTACCATTGGCTTTGT
TGCGGAACATTGGAACCTGTGCAGGCGGTGTACAGCATCCAAAATGAGAAGAAAAGAAAATGTGATGAGA
GTTTCGTGGCCATGCTCAACCTATGGCTGTGGTTAGATTCTGTTTTGAGGTCAAATCCCTTGATGGCA
TATCCAACATCGGCAGTATTATCCGGAAGTGAATGGTTTGTATCAGCAATGGCAGATGCTGACCATTT
TGACATTCACCTCCCACTAGACCTGGATGTGAAGATGAAAGCCATGATTTTTGGAGCTTGCTTCCTCATT
GACTTCATGTATTTTGAAGATCTCCACCACAACGTTCAAGA

ACGCGTACGCGGCGCTCGAGCAGAACTCATCTCAGAAGAGGATCTGGCAGCAAATGATATCCTGGATT
ACAAGGATGACGACGATAAGGTTTAA



[View online »](#)

Protein Sequence: >RC229718 representing NM_001177304
Red=Cloning site Green=Tags(s)

MENQTKPPDPRPDAPPEYNHFLPGPPGTAVPPPTGYPGGLPMGYSPQQPSTFPLYQPVGGIHPVRYQP
 GKYPMPNQSVPI TWMPGPTPMANCPPGLEYL VQLEVQCPPGVTIGFVAEHWNLCRAVYSIQNEKKENVMR
 VRGPCSTYGCSDSVFEVKS LDG I SNIGSIIRKWNGLLSAMADADHFDIHFPLDL DVKMKAMIFGACFLI
 DFMYFERSPPQRSR

TRTRPLEQKLISEEDLAANDILDYKDDDDKV

Chromatograms: https://cdn.origene.com/chromatograms/ja1446_e10.zip

Restriction Sites: SgfI-MluI

Cloning Scheme:



ACCN: NM_001177304

ORF Size: 672 bp

OTI Disclaimer: The molecular sequence of this clone aligns with the gene accession number as a point of reference only. However, individual transcript sequences of the same gene can differ through naturally occurring variations (e.g. polymorphisms), each with its own valid existence. This clone is substantially in agreement with the reference, but a complete review of all prevailing variants is recommended prior to use. [More info](#)

OTI Annotation: This clone was engineered to express the complete ORF with an expression tag. Expression varies depending on the nature of the gene.

Components: The ORF clone is ion-exchange column purified and shipped in a 2D barcoded Matrix tube containing 10ug of transfection-ready, dried plasmid DNA (reconstitute with 100 ul of water).

Reconstitution Method:

1. Centrifuge at 5,000xg for 5min.
2. Carefully open the tube and add 100ul of sterile water to dissolve the DNA.
3. Close the tube and incubate for 10 minutes at room temperature.
4. Briefly vortex the tube and then do a quick spin (less than 5000xg) to concentrate the liquid at the bottom.
5. Store the suspended plasmid at -20°C. The DNA is stable for at least one year from date of shipping when stored at -20°C.

RefSeq: [NM_001177304.2](#)

RefSeq ORF: 675 bp

Locus ID: 57088

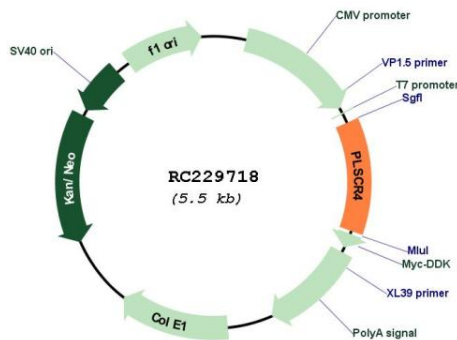
UniProt ID: [Q9NRQ2](#)

Cytogenetics: 3q24

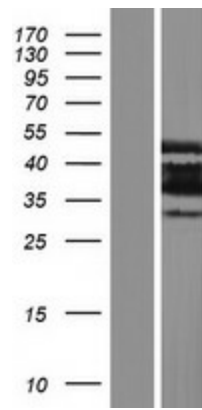
MW: 25.2 kDa

Gene Summary: May mediate accelerated ATP-independent bidirectional transbilayer migration of phospholipids upon binding calcium ions that results in a loss of phospholipid asymmetry in the plasma membrane. May play a central role in the initiation of fibrin clot formation, in the activation of mast cells and in the recognition of apoptotic and injured cells by the reticuloendothelial system.[UniProtKB/Swiss-Prot Function]

Product images:



Circular map for RC229718



Western blot validation of overexpression lysate (Cat# [LY432718]) using anti-DDK antibody (Cat# [TA50011-100]). Left: Cell lysates from untransfected HEK293T cells; Right: Cell lysates from HEK293T cells transfected with RC229718 using transfection reagent MegaTran 2.0 (Cat# [TT210002]).