

## Product datasheet for **RC229717**

### Nebulette (NEBL) (NM\_001173484) Human Tagged ORF Clone

#### Product data:

Product Type:	Expression Plasmids
Product Name:	Nebulette (NEBL) (NM_001173484) Human Tagged ORF Clone
Tag:	Myc-DDK
Symbol:	NEBL
Synonyms:	bA165O3.1; C10orf113; LASP2; LNEBL
Vector:	pCMV6-Entry (PS100001)
E. coli Selection:	Kanamycin (25 ug/mL)
Cell Selection:	Neomycin
ORF Nucleotide Sequence:	>RC229717 representing NM_001173484 Red=Cloning site Blue=ORF Green=Tags(s)

TTTTGTAATACGACTCACTATAGGGCGGCCGGAATTCGTCGACTGGATCCGGTACCGAGGAGATCTGCC  
GCC**CGATCGC**C

ATGAACCCCCAGTGCGCCGTTGCGGAAAAGTCGTGTATCCACCGAGAAAGTCAACTGCCTGGATAAGT  
ATTGGCATAAAGGATGTTTCCATTGTGAGGTCTGCAAGATGGCACTCAACATGAACAACACAAAGGCTA  
TGAAGAAGCCCTATTGTAATGCACACTACCCGAAGCAGTCCTTACCACGGTGGCAGATACACCTGAA  
AATCTTCGCCTGAAGCAGCAAAGTGAATTGCAGAGTCAGGTCAAGTACAAAAGAGATTTTGAAGAAAGCA  
AAGGGAGGGGCTTCAGCATCGTCACGGACACTCCTGAGCTACAGAGACTGAAGAGGACTCAGGAGCAAAT  
CAGTAATGTAATAACCATGAAGATTTTGAATAAAGGGGAGAGGCTTTACTCCCGTCGTGGACGAT  
CCTGTGACAGAGAGAGTGAGGAAGAACCCAGGTGGTCAGCGATGCTGCCTATAAAGGGGTCCACCCTC  
ACATCGTGGAGATGGACAGGAGACCTGGAATCATTGTTGCACCTGTTCTTCCCGGAGCCTATCAGCAAAG  
CCATCCCAAGGCTATGGCTACATGCACCAGACCAGTGTGTCATCCATGAGATCAATGCAGCATTCACCA  
AATCTAGACCTACCGAGCCATGTACGATTACAGTGCCAGGA

**ACGCGT**ACGCGGCCGCTCGAGCAGAAACTCATCTCAGAAGAGGATCTGGCAGCAAATGATATCCTGGATT  
ACAAGGATGACGACGATAAGGTTTAA



[View online »](#)

**Protein Sequence:** >RC229717 representing NM\_001173484  
Red=Cloning site Green=Tags(s)

MNPQCARCCKVVYPTEKVNCLDKYWHKGCFCHEVCKMALNMNYYKGYEKKPYCNAHYPKQSFSTTVADTPE  
 NLRRLKQSELQSQVKYKRDFFESKGRGFSIVTDTPQLRLKRTQEQISNVKYHEDFEKTKGRGFTPVVDD  
 PVTERVRKNTQVVSDAAAYKGVHPHIVEMDRRPGIIVAPVLPAYQQSHSQGYGYMHQTSVSSMRSMQHSP  
 NLDLPSHVRLQCPG

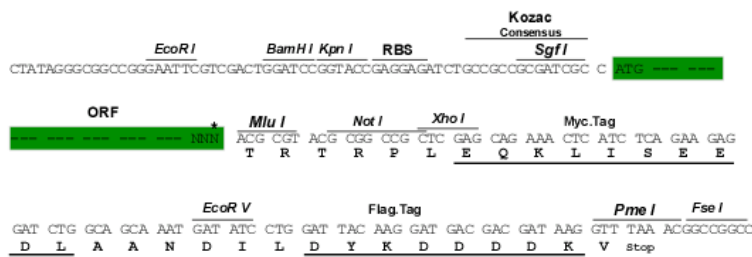
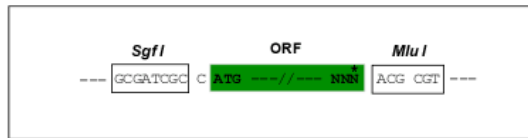
TRTRPLEQKLISEEDLAANDILDYKDDDDKV

**Restriction Sites:**

Sgfl-MluI

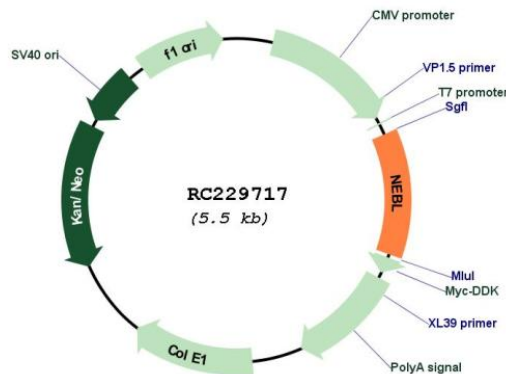
**Cloning Scheme:**

Cloning sites used for ORF Shuttling:



\* The last codon before the Stop codon of the ORF

**Plasmid Map:**



**ACCN:** NM\_001173484

**ORF Size:** 672 bp

<b>OTI Disclaimer:</b>	The molecular sequence of this clone aligns with the gene accession number as a point of reference only. However, individual transcript sequences of the same gene can differ through naturally occurring variations (e.g. polymorphisms), each with its own valid existence. This clone is substantially in agreement with the reference, but a complete review of all prevailing variants is recommended prior to use. <a href="#">More info</a>
<b>OTI Annotation:</b>	This clone was engineered to express the complete ORF with an expression tag. Expression varies depending on the nature of the gene.
<b>Components:</b>	The ORF clone is ion-exchange column purified and shipped in a 2D barcoded Matrix tube containing 10ug of transfection-ready, dried plasmid DNA (reconstitute with 100 ul of water).
<b>Reconstitution Method:</b>	<ol style="list-style-type: none"><li>1. Centrifuge at 5,000xg for 5min.</li><li>2. Carefully open the tube and add 100ul of sterile water to dissolve the DNA.</li><li>3. Close the tube and incubate for 10 minutes at room temperature.</li><li>4. Briefly vortex the tube and then do a quick spin (less than 5000xg) to concentrate the liquid at the bottom.</li><li>5. Store the suspended plasmid at -20°C. The DNA is stable for at least one year from date of shipping when stored at -20°C.</li></ol>
<b>RefSeq:</b>	<a href="#">NM_001173484.2</a>
<b>RefSeq ORF:</b>	675 bp
<b>Locus ID:</b>	10529
<b>UniProt ID:</b>	<a href="#">O76041</a>
<b>Cytogenetics:</b>	10p12.31
<b>MW:</b>	26.2 kDa
<b>Gene Summary:</b>	This gene encodes a nebulin like protein that is abundantly expressed in cardiac muscle. The encoded protein binds actin and interacts with thin filaments and Z-line associated proteins in striated muscle. This protein may be involved in cardiac myofibril assembly. A shorter isoform of this protein termed LIM nebulin is expressed in non-muscle cells and may function as a component of focal adhesion complexes. Alternate splicing results in multiple transcript variants. [provided by RefSeq, Mar 2010]