

## Product datasheet for **RC229715**

### LY108 (SLAMF6) (NM\_001184716) Human Tagged ORF Clone

#### Product data:

Product Type:	Expression Plasmids
Product Name:	LY108 (SLAMF6) (NM_001184716) Human Tagged ORF Clone
Tag:	Myc-DDK
Symbol:	LY108
Synonyms:	CD352; KALI; KALib; Ly108; NTB-A; NTBA; SF2000
Mammalian Cell Selection:	Neomycin
Vector:	pCMV6-Entry (PS100001)
E. coli Selection:	Kanamycin (25 ug/mL)
ORF Nucleotide Sequence:	>RC229715 representing NM_001184716 Red=Cloning site Blue=ORF Green=Tags(s)

TTTTGTAATACGACTCACTATAGGGCGGCCGGAATTCGTCGACTGGATCCGGTACCGAGGAGATCTGCC  
GCC**CGATCGCC**

ATGTTGGCTGTTCCAATCGCTCCTGTTGTCTTCTGCTTTGGCCAGGACAACAGGAAACATACAAG  
TTACCAATCACAGTCAGCTATTTTCAAGAATGACCTGTGAGCTCCATCTGACTTGCTCTGTGGAGGATGC  
AGATGACAATGTCTCATTAGATGGGAGGCCTGGGAAACACACTTTCAAGTCAGCCAAACCTCACTGTC  
TCCTGGGACCCAGGATTTCCAGTGAACAGGACTACACCTGCATAGCAGAGAATGCTGTCAGTAATTTAT  
CCTTCTGTCTCTGCCAGAAGCTTTGCGAAGATGTTAAAATCAATATACAGATACCAAATGATTCT  
GTTTATGGTTTCTGGGATATGCATAGTCTTCGGTTTCATCATACTGCTGTTACTTGTGTTTGGAGAAAGA  
AGAGATTCCTATCTTTGTCTACTCAGCGAACACAGGGCCCGCAGAGTCCGCAAGGAACCTAGAGTATG  
TTTCAGTGTCTCCAACGAACAACACTGTGTATGCTTCAGTCACTCATTCAAACAGGGAAACAGAAATCTG  
GACACCTAGAGAAAATGATACTATCACAATTTACTCCACAATTAATCATTCCAAAGAGAGTAAACCCACT  
TTTTCCAGGGCAACTGCCCTTGACAATGTCGTG

**ACGCGT**ACGCGGCCGCTCGAGCAGAAACTCATCTCAGAAGAGGATCTGGCAGCAAATGATATCTGGATT  
ACAAGGATGACGACGATAAGGTTTAA



[View online »](#)

**Protein Sequence:** >RC229715 representing NM\_001184716  
 Red=Cloning site Green=Tags(s)

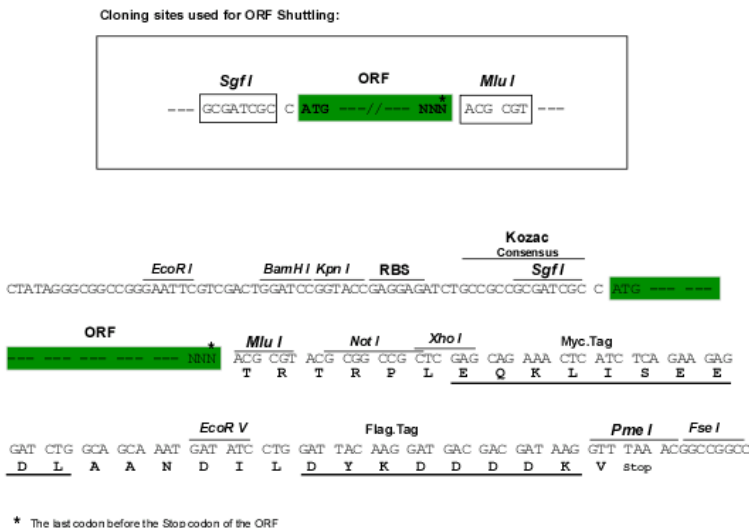
MLWLFQSLLFVFCFGPGQLRNIQVTNHSQLFQNMTCELHLTCSVEDADDNVSFRWEALGNTLSSQPNLTV  
 SWDPRISSEQDYTCIAENAVSNLSFSVSAQKLCEDVKIQYTDTKMILFMVSGICIVFGFIILLLLVLRKR  
 RDSLSTLSTQRTQGPAESARNLEYVSVSPNTNTVYASVTHSNRETEIWTPRENDTITIYSTINHSKESKPT  
 FSRATALDNVV

TRTRPLEQKLISEEDLAANDILDYKDDDDKV

**Chromatograms:** [https://cdn.origene.com/chromatograms/ja1505\\_d11.zip](https://cdn.origene.com/chromatograms/ja1505_d11.zip)

**Restriction Sites:** SgfI-MluI

**Cloning Scheme:**



**ACCN:** NM\_001184716

**ORF Size:** 663 bp

**OTI Disclaimer:** The molecular sequence of this clone aligns with the gene accession number as a point of reference only. However, individual transcript sequences of the same gene can differ through naturally occurring variations (e.g. polymorphisms), each with its own valid existence. This clone is substantially in agreement with the reference, but a complete review of all prevailing variants is recommended prior to use. [More info](#)

**OTI Annotation:** This clone was engineered to express the complete ORF with an expression tag. Expression varies depending on the nature of the gene.

**Components:** The ORF clone is ion-exchange column purified and shipped in a 2D barcoded Matrix tube containing 10ug of transfection-ready, dried plasmid DNA (reconstitute with 100 ul of water).

**Reconstitution Method:**

1. Centrifuge at 5,000xg for 5min.
2. Carefully open the tube and add 100ul of sterile water to dissolve the DNA.
3. Close the tube and incubate for 10 minutes at room temperature.
4. Briefly vortex the tube and then do a quick spin (less than 5000xg) to concentrate the liquid at the bottom.
5. Store the suspended plasmid at -20°C. The DNA is stable for at least one year from date of shipping when stored at -20°C.

**RefSeq:** [NM\\_001184716.2](#)

**RefSeq ORF:** 666 bp

**Locus ID:** 114836

**UniProt ID:** [Q96DU3](#)

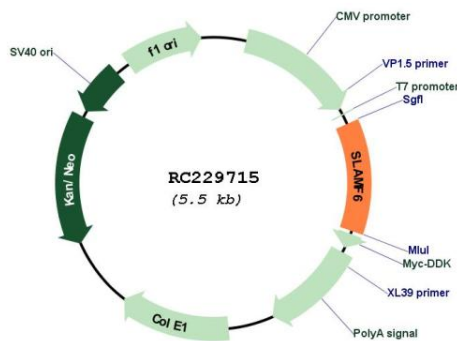
**Cytogenetics:** 1q23.2-q23.3

**Protein Families:** Druggable Genome, Transmembrane

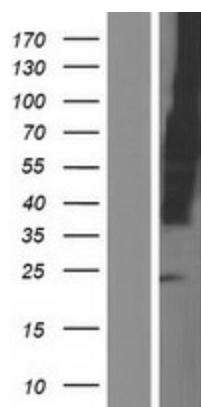
**MW:** 25.4 kDa

**Gene Summary:** The protein encoded by this gene is a type I transmembrane protein, belonging to the CD2 subfamily of the immunoglobulin superfamily. This encoded protein is expressed on Natural killer (NK), T, and B lymphocytes. It undergoes tyrosine phosphorylation and associates with the Src homology 2 domain-containing protein (SH2D1A) as well as with SH2 domain-containing phosphatases (SHPs). It functions as a coreceptor in the process of NK cell activation. It can also mediate inhibitory signals in NK cells from X-linked lymphoproliferative patients. Alternative splicing results in multiple transcript variants encoding distinct isoforms. [provided by RefSeq, May 2010]

**Product images:**



Circular map for RC229715



Western blot validation of overexpression lysate (Cat# [LY432715]) using anti-DDK antibody (Cat# [TA50011-100]). Left: Cell lysates from untransfected HEK293T cells; Right: Cell lysates from HEK293T cells transfected with RC229715 using transfection reagent MegaTran 2.0 (Cat# [TT210002]).