

Product datasheet for **RC229712**

ITM2A (NM_001171581) Human Tagged ORF Clone

Product data:

Product Type: Expression Plasmids
Product Name: ITM2A (NM_001171581) Human Tagged ORF Clone
Tag: Myc-DDK
Symbol: ITM2A
Synonyms: BRICD2A; E25A
Mammalian Cell Selection: Neomycin
Vector: pCMV6-Entry (PS100001)
E. coli Selection: Kanamycin (25 ug/mL)
ORF Nucleotide Sequence: >RC229712 representing NM_001171581
Red=Cloning site Blue=ORF Green=Tags(s)

TTTTGTAATACGACTCACTATAGGGCGCCGGGAATTCGTCGACTGGATCCGGTACCGAGGAGATCTGCC
GCC**CGATCGCC**

ATGGTGAAAATCGCCTTCAATACCCCTACCGCCGTGCAAAGGAGGAGGCGCGGCAAGACGTGGAGGCC
TCCTGAGCCGCACGGTCAGAACTCAGATACTGACCGGCAAGACACCATTACCGTGGAGAGATGTGCTT
TTTTGATTCTGAGGATCCTGCAAATCCCTTCGTGGAGGAGAGCCTAACTTCCTGCCTGTGACTGAGGAG
GCTGACATTCGTGAGGATGACAACATTGCAATCATTGATGTGCCTGTCCCAGTTTCTCTGATAGTGACC
CTGCAGCAATTATTCATGACTTTGAAAAGGGAATGACTGCTTACCTGGACTTGTTGCTGGGAACTGCTA
TCTGATGCCCTCAATACTTCTATTGTTATGCCTCCAAAAAATCTGGTAGAGCTCTTGGCAAACCTGGCG
AGTGCCAGATATCTGCCTCAAACCTATGTGTTTCGAGAAGACCTAGTTGCTGTGGAGGAAATTCGTGATG
TTAGTAACCTTGGCATCTTTATTTACCAACTTTGCAATAACAGAAAGTCCTTCCGCCTTCGTGCGAGAGA
CCTCTTGCTGGGTTTCAACAAACGTGCCATTGATAAATGCTGGAAGATTAGACACTTCCCAACGAATTT
ATTGTTGAGACCAAGATCTGTCAAGAG

ACGCGTACGCGGCGCTCGAGCAGAAACTCATCTCAGAAGAGGATCTGGCAGCAATGATATCCTGGATT
ACAAGGATGACGACGATAAGGTTTAA



[View online »](#)

Protein Sequence: >RC229712 representing NM_001171581
Red=Cloning site Green=Tags(s)

MVKIAFNTPTAVQKKEARQDVEALLSRTVRTQILTGKSTIYRGEMCFDSEDPANSLRGGEPNPLPVTEE
 ADIREDDNIAIIDVPVPSFSDSDPAIIHDFEKGMTAYLDLLLGNCYLMLPNTSIVMPPKNLVELFGKLA
 SGRYLPQTYVVREDLVAVEEIRDVSNLGFIFYQLCNNRKSFRLLRRRDLGLFNKRAIDKCKWKIRHFPNEF
 IVETKICQE

TRTRPLEQKLISEEDLAANDILDYKDDDDKV

Chromatograms: https://cdn.origene.com/chromatograms/ja1447_e09.zip

Restriction Sites: SgfI-MluI

Cloning Scheme:



ACCN: NM_001171581

ORF Size: 657 bp

OTI Disclaimer: The molecular sequence of this clone aligns with the gene accession number as a point of reference only. However, individual transcript sequences of the same gene can differ through naturally occurring variations (e.g. polymorphisms), each with its own valid existence. This clone is substantially in agreement with the reference, but a complete review of all prevailing variants is recommended prior to use. [More info](#)

OTI Annotation: This clone was engineered to express the complete ORF with an expression tag. Expression varies depending on the nature of the gene.

Components: The ORF clone is ion-exchange column purified and shipped in a 2D barcoded Matrix tube containing 10ug of transfection-ready, dried plasmid DNA (reconstitute with 100 ul of water).

Reconstitution Method:

1. Centrifuge at 5,000xg for 5min.
2. Carefully open the tube and add 100ul of sterile water to dissolve the DNA.
3. Close the tube and incubate for 10 minutes at room temperature.
4. Briefly vortex the tube and then do a quick spin (less than 5000xg) to concentrate the liquid at the bottom.
5. Store the suspended plasmid at -20°C. The DNA is stable for at least one year from date of shipping when stored at -20°C.

RefSeq: [NM_001171581.1](#), [NP_001165052.1](#)

RefSeq ORF: 660 bp

Locus ID: 9452

UniProt ID: [O43736](#)

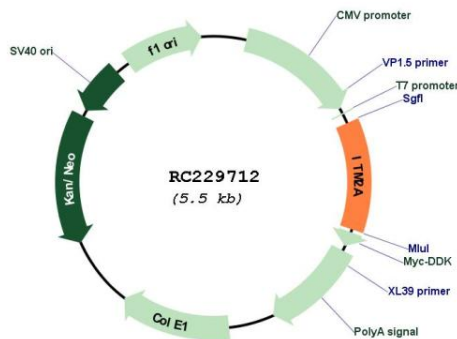
Cytogenetics: Xq21.1

Protein Families: Transmembrane

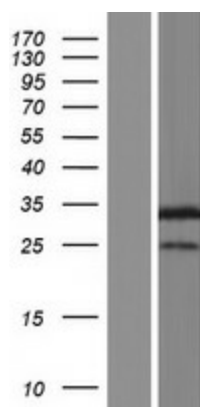
MW: 25.4 kDa

Gene Summary: This gene encodes a type II membrane protein that belongs to the ITM2 family. Studies in mouse suggest that it may be involved in osteo- and chondrogenic differentiation. Alternatively spliced transcript variants encoding different isoforms have been found for this gene. [provided by RefSeq, Jan 2010]

Product images:



Circular map for RC229712



Western blot validation of overexpression lysate (Cat# [LY432712]) using anti-DDK antibody (Cat# [TA50011-100]). Left: Cell lysates from untransfected HEK293T cells; Right: Cell lysates from HEK293T cells transfected with RC229712 using transfection reagent MegaTran 2.0 (Cat# [TT210002]).