

Product datasheet for **RC229701**

IGLL5 (NM_001178126) Human Tagged ORF Clone

Product data:

Product Type: Expression Plasmids
Product Name: IGLL5 (NM_001178126) Human Tagged ORF Clone
Tag: Myc-DDK
Symbol: IGLL5
Synonyms: IGL; IGLV; VL-MAR
Mammalian Cell Selection: Neomycin
Vector: pCMV6-Entry (PS100001)
E. coli Selection: Kanamycin (25 ug/mL)
ORF Nucleotide Sequence: >RC229701 representing NM_001178126
 Red=Cloning site Blue=ORF Green=Tags(s)

TTTTGTAATACGACTCACTATAGGGCGCCGGGAATTCGTCGACTGGATCCGGTACCGAGGAGATCTGCC
 GCC**CGATCGCC**

ATGAGACCCAAGACAGGCCAAGTGGGTTGTGAGACCCCTGAGGAGCTGGGCCCTGGTCCCAGGCAGCGCT
 GGCCCTGCTGCTGCTGGGTCTGGCCATGGTCGCCATGGCTGCTGCGCCCAATGGTTGCACCGCAAAG
 CGGGGACCCAGACCCTGGAGCCTCAGTTGGAAGCAGCCGATCCAGCCTGCGGAGCCTGTGGGCAGGCTC
 CTGCTCCAGCCCAGCCCCAGAGAGCAGACCCAGGTGCTGGCCCCGGGGTTTTGGTCTGAGCCTCAGT
 CACTGTGTTATGTCTTCGGAAGTGGACCAAGGTACCGTCCTAGGTGAGCCCAAGGCCAACCCACTGT
 CACTCTGTTCCCGCCCTCCTCTGAGGAGCTCCAAGCCAACAAGGCCACACTAGTGTGTCTGATCAGTGAC
 TTCTACCCGGGAGCTGTGACAGTGGCCTGGAAGGCAGATGGCAGCCCCGTCAAGGCGGGAGTGGAGACCA
 CCAAACCTCCAAACAGAGCAACAACAAGTACGCGGCCAGCAGCTACCTGAGCCTGACGCCCGAGCAGTG
 GAAGTCCCACAGAAGCTACAGCTGCCAGGTACGCATGAAGGGAGCACCGTGGAGAAGACAGTGGCCCT
 ACAGAATGTTCA

ACGCGTACGCGGGCCGCTCGAGCAGAACTCATCTCAGAAGAGGATCTGGCAGCAAATGATATCCTGGATT
 ACAAGGATGACGACGATAAGGTTTAA



[View online »](#)

Protein Sequence: >RC229701 representing NM_001178126
Red=Cloning site Green=Tags(s)

MRPKTGQVGCETPEELGPGRQRWPLLLLGLAMVAHLLRPMVAPQSGDPDPGASVGSRRSLRSLWGRL
 LLQPSPQRADPRCWPRGFWSEPQSLCYVFGTGTKVTVLGQPKANPTVTLFPPSSEELQANKATLVCLISD
 FYPGAVTVAWKADGSPVKAGVETTKPSKQSNKYAASSYLSLTPEQWKSHRSYSCQVTHEGSTVEKTVAP
 TECS

TRTRPLEQKLISEEDLAANDILDYKDDDDKV

Chromatograms: https://cdn.origene.com/chromatograms/mk8036_g11.zip

Restriction Sites: SgfI-MluI

Cloning Scheme:



ACCN: NM_001178126

ORF Size: 642 bp

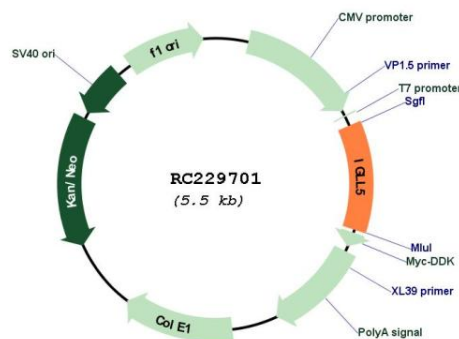
OTI Disclaimer: Due to the inherent nature of this plasmid, standard methods to replicate additional amounts of DNA in E. coli are highly likely to result in mutations and/or rearrangements. Therefore, OriGene does not guarantee the capability to replicate this plasmid DNA. Additional amounts of DNA can be purchased from OriGene with batch-specific, full-sequence verification at a reduced cost. Please contact our customer care team at custsupport@origene.com or by calling 301.340.3188 option 3 for pricing and delivery.

The molecular sequence of this clone aligns with the gene accession number as a point of reference only. However, individual transcript sequences of the same gene can differ through naturally occurring variations (e.g. polymorphisms), each with its own valid existence. This clone is substantially in agreement with the reference, but a complete review of all prevailing variants is recommended prior to use. [More info](#)

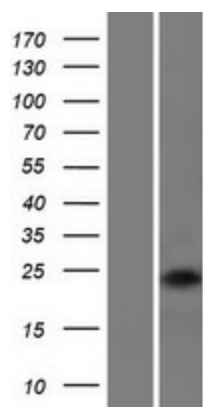
OTI Annotation: This clone was engineered to express the complete ORF with an expression tag. Expression varies depending on the nature of the gene.

- Components:** The ORF clone is ion-exchange column purified and shipped in a 2D barcoded Matrix tube containing 10ug of transfection-ready, dried plasmid DNA (reconstitute with 100 ul of water).
- Reconstitution Method:**
1. Centrifuge at 5,000xg for 5min.
 2. Carefully open the tube and add 100ul of sterile water to dissolve the DNA.
 3. Close the tube and incubate for 10 minutes at room temperature.
 4. Briefly vortex the tube and then do a quick spin (less than 5000xg) to concentrate the liquid at the bottom.
 5. Store the suspended plasmid at -20°C. The DNA is stable for at least one year from date of shipping when stored at -20°C.
- RefSeq:** [NM_001178126.2](#)
- RefSeq ORF:** 645 bp
- Locus ID:** 100423062
- UniProt ID:** [B9A064](#)
- Cytogenetics:** 22q11.22
- MW:** 23.5 kDa
- Gene Summary:** This gene encodes one of the immunoglobulin lambda-like polypeptides. It is located within the immunoglobulin lambda locus but it does not require somatic rearrangement for expression. The first exon of this gene is unrelated to immunoglobulin variable genes; the second and third exons are the immunoglobulin lambda joining 1 and the immunoglobulin lambda constant 1 gene segments. Alternative splicing results in multiple transcript variants. [provided by RefSeq, May 2010]

Product images:



Circular map for RC229701



Western blot validation of overexpression lysate (Cat# [LY432701]) using anti-DDK antibody (Cat# [TA50011-100]). Left: Cell lysates from untransfected HEK293T cells; Right: Cell lysates from HEK293T cells transfected with RC229701 using transfection reagent MegaTran 2.0 (Cat# [TT210002]).