

## Product datasheet for **RC229697**

### VEPH1 (NM\_001167915) Human Tagged ORF Clone

#### Product data:

**Product Type:** Expression Plasmids  
**Product Name:** VEPH1 (NM\_001167915) Human Tagged ORF Clone  
**Tag:** Myc-DDK  
**Symbol:** VEPH1  
**Synonyms:** MELT; VEPH  
**Vector:** pCMV6-Entry (PS100001)  
**E. coli Selection:** Kanamycin (25 ug/mL)  
**Cell Selection:** Neomycin  
**ORF Nucleotide Sequence:** >RC229697 representing NM\_001167915  
**Red=Cloning site Blue=ORF Green=Tags(s)**

TTTTGTAATACGACTCACTATAGGGCGGCCGGAATTCGTCGACTGGATCCGGTACCGAGGAGATCTGCC  
GCC**CGATCGCC**

ATGCATCAACTGTTTCAGACTGGTTTTGGGACAAAAGATCTTTCACGAGCTGGGGACCTCTTCTCCTTAG  
ATGACTCTGAGATTGAAGACAGCCTTACAGAAGCTTTGGAGCAAATTAAGATAATTAGCTCATCTTCAGA  
TTACCAAACCAATAACAATGACCAGGCAGTAGTTGAAATCTGTATCACAAGAATCACAACAGCCATCAGA  
GAGACCGAGTCCATTGAAAAGCATGCAAAGGCCCTTGTGGGGCTCTGGGACTCCTGCTTGGAAACATAACC  
TGAGACCCCTTTGGGAAAGACGAAGACACTCCTCATGCAAAAATCGCATCTGATATCATGAGTTGCATTTT  
ACAGAATTACAACCGACCCCAAGTATGATGGCATTAGCCATCCCCATTGCAGTGAAATTCCTCCACAGAGGC  
ACAAGGAAGTGTGACGGAATAAGTCTAACTACCTGTCTCTGGCTGCAATTACCAAGGCAGATCTCCTGG  
CTGATCACACGGAAGTTATAGTAAAGAGCATACTCCAAGGTATGGTGCGAAAGTTGAGCTTGGGGACATG  
TTTTGGGAGATTTTAAAAGTATTTTCATCAAGCATTTATGGTTTGTGGGAAGCAAGACCTAGAGTATTA  
GAAGCAAAT

**ACGCGT**ACGCGGCCGCTCGAGCAGAAACTCATCTCAGAAGAGGATCTGGCAGCAAATGATATCCTGGATT  
ACAAGGATGACGACGATAAGGTTTAA



[View online »](#)

**Protein Sequence:** >RC229697 representing NM\_001167915  
Red=Cloning site Green=Tags(s)

MHQLFRLVLGQKDL SRAGDLFSLDDSEIEDSLTEALEQIKIISSSSDYQTNNDQAVVEICITRITTAIR  
 ETESIEKHAKALVGLWDSCLEHNL RPF GKDEDTPHAKIASDIMSCILQNYNRPVPMALAPIAVKFLHRG  
 NKELCRNMSNYLSLAAITKADLLADHTEVIVKSI LQGMVRKLSLGT C FGRYLKVFSSSIYGLWEARPRVL  
 EAN

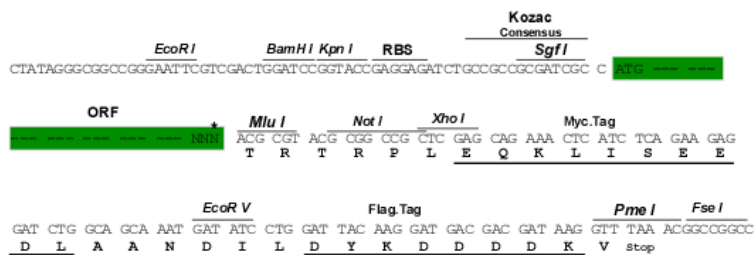
TRTRPLEQKLISEEDLAANDILDYKDDDDKV

**Restriction Sites:**

Sgfl-MluI

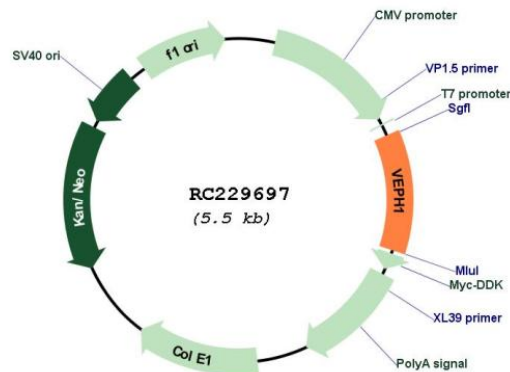
**Cloning Scheme:**

Cloning sites used for ORF Shuttling:



\* The last codon before the Stop codon of the ORF

**Plasmid Map:**



**ACCN:** NM\_001167915

**ORF Size:** 639 bp

<b>OTI Disclaimer:</b>	The molecular sequence of this clone aligns with the gene accession number as a point of reference only. However, individual transcript sequences of the same gene can differ through naturally occurring variations (e.g. polymorphisms), each with its own valid existence. This clone is substantially in agreement with the reference, but a complete review of all prevailing variants is recommended prior to use. <a href="#">More info</a>
<b>OTI Annotation:</b>	This clone was engineered to express the complete ORF with an expression tag. Expression varies depending on the nature of the gene.
<b>Components:</b>	The ORF clone is ion-exchange column purified and shipped in a 2D barcoded Matrix tube containing 10ug of transfection-ready, dried plasmid DNA (reconstitute with 100 ul of water).
<b>Reconstitution Method:</b>	<ol style="list-style-type: none"><li>1. Centrifuge at 5,000xg for 5min.</li><li>2. Carefully open the tube and add 100ul of sterile water to dissolve the DNA.</li><li>3. Close the tube and incubate for 10 minutes at room temperature.</li><li>4. Briefly vortex the tube and then do a quick spin (less than 5000xg) to concentrate the liquid at the bottom.</li><li>5. Store the suspended plasmid at -20°C. The DNA is stable for at least one year from date of shipping when stored at -20°C.</li></ol>
<b>RefSeq:</b>	<a href="#">NM_001167915.2</a>
<b>RefSeq ORF:</b>	642 bp
<b>Locus ID:</b>	79674
<b>UniProt ID:</b>	<a href="#">Q14D04</a>
<b>Cytogenetics:</b>	3q25.31-q25.32
<b>MW:</b>	24.3 kDa
<b>Gene Summary:</b>	Interacts with TGF-beta receptor type-1 (TGFBR1) and inhibits dissociation of activated SMAD2 from TGFBR1, impeding its nuclear accumulation and resulting in impaired TGF-beta signaling. May also affect FOXO, Hippo and Wnt signaling.[UniProtKB/Swiss-Prot Function]