

Product datasheet for RC229690

Endothelin 1 (EDN1) (NM_001168319) Human Tagged ORF Clone

Product data:

Product Type:	Expression Plasmids
Product Name:	Endothelin 1 (EDN1) (NM_001168319) Human Tagged ORF Clone
Tag:	Myc-DDK
Symbol:	Endothelin 1
Synonyms:	ARCND3; ET1; HDLCQ7; PPET1; QME
Mammalian Cell Selection:	Neomycin
Vector:	pCMV6-Entry (PS100001)
E. coli Selection:	Kanamycin (25 ug/mL)
ORF Nucleotide Sequence:	>RC229690 representing NM_001168319 Red=Cloning site Blue=ORF Green=Tags(s)

TTTTGTAATACGACTCACTATAGGGCGGCCGGAATTCGTCGACTGGATCCGGTACCGAGGAGATCTGCCGCCCGATCGCC

ATGGATTATTTGCTCATGATTTTCTCTGCTGTTTGTGGCTTGCCAAGGAGCTCCAGAAACAGCAGTCTTAGGGCTGAGCTCAGCGCGTGGTGAGAACGGCGGGGAGAAACCCACTCCCAGTCCACCCTGGCGGCTCCGCCGTCCAAGCGCTGCTCCTGCTCGTCCCTGATGGATAAAGAGTGTGTCTACTTCTGCCACCTGGACATCATTTGGGTCAACACTCCCGAGCACGTTGTTCCGTATGGACTTGAAGCCCTAGTCCAAGAGAGCCTTGGAGAATTTACTTCCCACAAAGCAACAGACCGTGAGAATAGATGCCAATGTGCTAGCCAAAAAGACAA GAAGTGCTGGAATTTTTGCCAAGCAGGAAAAGAACTCAGGGCTGAAGACATTATGGAGAAAGACTGGAATAATCATAAGAAAGAAAAGACTGTTCCAAGCTTGGGAAAAAGTATTTATCAGCAGTTAGTGAGAGGAA GAAAAATCAGAAGAAGTTCAGAGGAACACCTAAGACAAACCAGGTCGGAGACCATGAGAAACAGCGTCAA ATCATCTTTTCATGATCCCAAGCTGAAAGGCAATCCCTCCAGAGAGCGTTATGTGACCCACAACCGAGCA CATTGG

ACGCGTACGCGGCGCTCGAGCAGAACTCATCTCAGAAGAGGATCTGGCAGCAATGATATCCTGGATTACAAGGATGACGACGATAAGGTTTAA



[View online »](#)

Protein Sequence: >RC229690 representing NM_001168319
 Red=Cloning site Green=Tags(s)

MDYLLMIFSLLFVACQGAPETA VLGAELSAVGENGGEKPTSPPPWRLRRSKRCSLMDKECVYFCHLD
 I IWVNTPEHVVPYGLGSPRSKRAL ENLLPTKATDRENRCQCASQKDKCWNFCQAGKELRAEDIMEKDWN
 NHKKGKDCSKLGKKCIYQQLVGRKIRRSSEEHLRQTRSETMRNSVKSSFHDPKLGKGNPSRERYVTHNRA
 HW

TRTRPLEQKLISEEDLAANDILDYKDDDDKV

Chromatograms: https://cdn.origene.com/chromatograms/ja1459_g05.zip

Restriction Sites: SgfI-MluI

Cloning Scheme:



ACCN: NM_001168319

ORF Size: 636 bp

OTI Disclaimer: The molecular sequence of this clone aligns with the gene accession number as a point of reference only. However, individual transcript sequences of the same gene can differ through naturally occurring variations (e.g. polymorphisms), each with its own valid existence. This clone is substantially in agreement with the reference, but a complete review of all prevailing variants is recommended prior to use. [More info](#)

OTI Annotation: This clone was engineered to express the complete ORF with an expression tag. Expression varies depending on the nature of the gene.

Components: The ORF clone is ion-exchange column purified and shipped in a 2D barcoded Matrix tube containing 10ug of transfection-ready, dried plasmid DNA (reconstitute with 100 ul of water).

Reconstitution Method:

1. Centrifuge at 5,000xg for 5min.
2. Carefully open the tube and add 100ul of sterile water to dissolve the DNA.
3. Close the tube and incubate for 10 minutes at room temperature.
4. Briefly vortex the tube and then do a quick spin (less than 5000xg) to concentrate the liquid at the bottom.
5. Store the suspended plasmid at -20°C. The DNA is stable for at least one year from date of shipping when stored at -20°C.

RefSeq: [NM_001168319.1](#), [NP_001161791.1](#)

RefSeq ORF: 636 bp

Locus ID: 1906

UniProt ID: [P05305](#)

Cytogenetics: 6p24.1

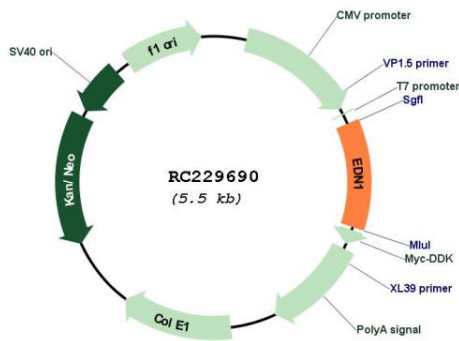
Protein Families: Druggable Genome, Secreted Protein

Protein Pathways: Melanogenesis

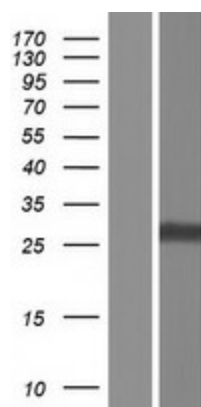
MW: 24.8 kDa

Gene Summary: This gene encodes a preproprotein that is proteolytically processed to generate a secreted peptide that belongs to the endothelin/sarafotoxin family. This peptide is a potent vasoconstrictor and its cognate receptors are therapeutic targets in the treatment of pulmonary arterial hypertension. Aberrant expression of this gene may promote tumorigenesis. Alternative splicing results in multiple transcript variants. [provided by RefSeq, Oct 2015]

Product images:



Circular map for RC229690



Western blot validation of overexpression lysate (Cat# [LY432690]) using anti-DDK antibody (Cat# [TA50011-100]). Left: Cell lysates from untransfected HEK293T cells; Right: Cell lysates from HEK293T cells transfected with RC229690 using transfection reagent MegaTran 2.0 (Cat# [TT210002]).