

Product datasheet for RC229687

LHPP (NM_001167880) Human Tagged ORF Clone

Product data:

Product Type: Expression Plasmids
Product Name: LHPP (NM_001167880) Human Tagged ORF Clone
Tag: Myc-DDK
Symbol: LHPP
Synonyms: HDHD2B
Mammalian Cell Selection: Neomycin
Vector: pCMV6-Entry (PS100001)
E. coli Selection: Kanamycin (25 ug/mL)
ORF Nucleotide Sequence: >RC229687 representing NM_001167880
 Red=Cloning site Blue=ORF Green=Tags(s)

TTTTGTAATACGACTCACTATAGGGCGGCCGGAATTCGTCGACTGGATCCGGTACCGAGGAGATCTGCC
 GCC**CGATCGCC**

ATGGCACCGTGGGCAAGCGGCTGGCTGGCGTGC CGGGGTGCTGCTTGACATCTCGGGCGTGTACG
 ACAGCGGCGGGCGGGCCAGGCCATCGCCGGCTCGGTGGAGGCGGTGGCCAGACTGAAGCGTCCCG
 GCTGAAGGTGAGTTCTGCACCAACGAGTCGCAGAAGTCCCGGCAGAGCTGGTGGGCAGCTTCAGAGG
 CTGGGATTTGACATCTCTGAGCAGGAGGTGACCGCCCGCACCACTGCCTGCCAGATCCTGAAGGAGC
 GAGGCCTGCGACCATACCTGCTCATCCATGACGGAGTCCGCTCAGAATTTGATCAGATCGACACATCCAA
 CCCAAACTGTGTGTAATTGCAGACGCAGGAGAAAGCTTTTCTTATCAAACATGAATAACGCCTCCAG
 GTGCTCATGGAGCTGGAAAAACCTGTGCTCATATCACTGGGAAAAGGGCCTTACTACAAGGAGACCTCTG
 GCCTGATGCTGGACGTTTGTCCCTACATGAAGGCGCTTGAGTATGCCTGTGGCATCAAAGCCGAGGTGGT
 GGGGAAGCCTTCTCTGAGTTTTTCAAGTCTGCCTGCAAGCGATAGGAGTGGAAGCCCACCAGGCCAG

ACGCGTACGCGGCCGCTCGAGCAGAACTCATCTCAGAAGAGGATCTGGCAGCAAATGATATCCTGGATT
 ACAAGGATGACGACGATAAGGTTTAA

Protein Sequence: >RC229687 representing NM_001167880
 Red=Cloning site Green=Tags(s)

MAPWGKRLAGVRGVLIDISGLYDSGAGGTAIAGSVEAVARLKRSLKVRFTNESQKSRAELVGQLQR
 LGFDISEQEVTAAPAACQILKERGLRPYLLIHDGVRSEFDQIDTSNPNCVVIADAGESFSYQNMNNAFQ
 VLMELEKPVLLISLGKGRYYKETSGLMLDVCPLYMKALEYACGIKAEVVGKPSPEFFKSALQAIGVEAHOAQ

TRTRPLEQKLISEEDLAANDILDYKDDDDKV

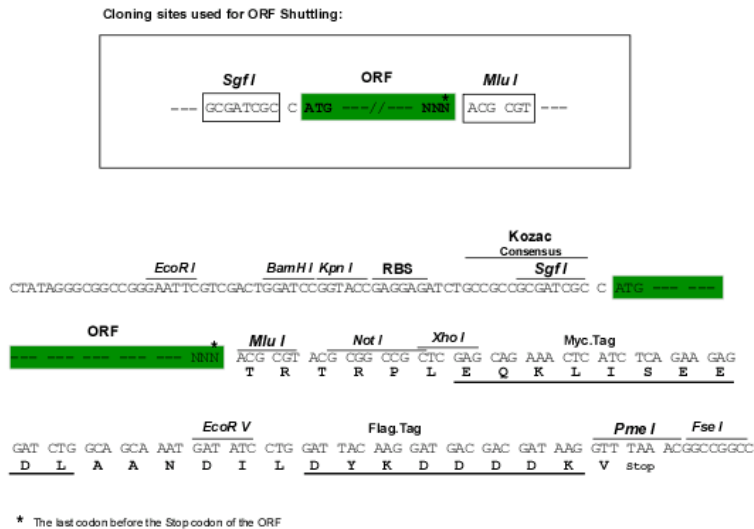


[View online »](#)

Chromatograms: https://cdn.origene.com/chromatograms/ja1428_f05.zip

Restriction Sites: SgfI-MluI

Cloning Scheme:



ACCN: NM_001167880

ORF Size: 630 bp

OTI Disclaimer: The molecular sequence of this clone aligns with the gene accession number as a point of reference only. However, individual transcript sequences of the same gene can differ through naturally occurring variations (e.g. polymorphisms), each with its own valid existence. This clone is substantially in agreement with the reference, but a complete review of all prevailing variants is recommended prior to use. [More info](#)

OTI Annotation: This clone was engineered to express the complete ORF with an expression tag. Expression varies depending on the nature of the gene.

Components: The ORF clone is ion-exchange column purified and shipped in a 2D barcoded Matrix tube containing 10ug of transfection-ready, dried plasmid DNA (reconstitute with 100 ul of water).

Reconstitution Method:

1. Centrifuge at 5,000xg for 5min.
2. Carefully open the tube and add 100ul of sterile water to dissolve the DNA.
3. Close the tube and incubate for 10 minutes at room temperature.
4. Briefly vortex the tube and then do a quick spin (less than 5000xg) to concentrate the liquid at the bottom.
5. Store the suspended plasmid at -20°C. The DNA is stable for at least one year from date of shipping when stored at -20°C.

RefSeq: [NM_001167880.1](#), [NP_001161352.1](#)

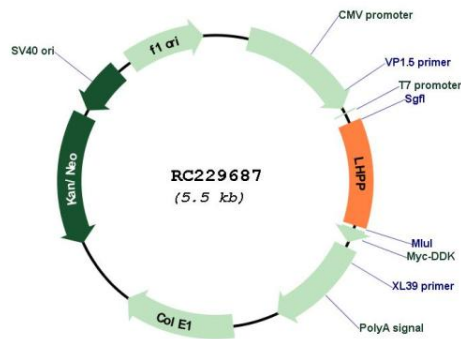
RefSeq ORF: 633 bp

Locus ID: 64077

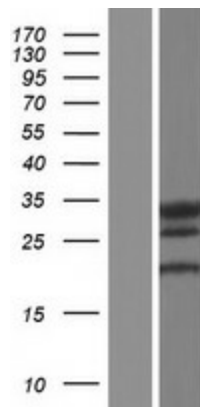
UniProt ID: [Q9H008](#)

Cytogenetics: 10q26.13
Protein Families: Druggable Genome
Protein Pathways: Oxidative phosphorylation
MW: 23.1 kDa
Gene Summary: Phosphatase that hydrolyzes imidodiphosphate, 3-phosphohistidine and 6-phospholysine. Has broad substrate specificity and can also hydrolyze inorganic diphosphate, but with lower efficiency (By similarity).[UniProtKB/Swiss-Prot Function]

Product images:



Circular map for RC229687



Western blot validation of overexpression lysate (Cat# [LY432687]) using anti-DDK antibody (Cat# [TA50011-100]). Left: Cell lysates from untransfected HEK293T cells; Right: Cell lysates from HEK293T cells transfected with RC229687 using transfection reagent MegaTran 2.0 (Cat# [TT210002]).