

Product datasheet for **RC229664**

FAM3A (NM_001171133) Human Tagged ORF Clone

Product data:

Product Type:	Expression Plasmids
Product Name:	FAM3A (NM_001171133) Human Tagged ORF Clone
Tag:	Myc-DDK
Symbol:	FAM3A
Synonyms:	2.19; DLD; DXS560S; XAP-7
Mammalian Cell Selection:	Neomycin
Vector:	pCMV6-Entry (PS100001)
E. coli Selection:	Kanamycin (25 ug/mL)
ORF Nucleotide Sequence:	>RC229664 representing NM_001171133 Red=Cloning site Blue=ORF Green=Tags(s)

TTTTGTAATACGACTCACTATAGGGCGGCCGGAATTCGTCGACTGGATCCGGTACCGAGGAGATCTGCC
GCC**CGATCGCC**

ATGAGGTTGGCAGGTCCAGAGAGCTCGGTGACTGCAGCGCCACGGGCCAGGAAGTACAAGTGTGGCCTGC
CCCAGCGGTGTCCTGAGGAGCACCTGGCCTTCCGCGTGGTCAGCGGGGCCCAACGTCATTGGGCCAA
GATCTGCCTCGAGGACAAGATGCTGATGAGCAGCGTCAAGGACAACGTGGGCCGGGCTGAACATCGCC
CTGGTGAACGGGGTCAGCGGCGAGCTCATCGAGGCCCGGGCTTTGACATGTGGGCCGGAGATGTCAACG
ACCTGTTGAAGTTTATTCGGCCACTGCACGAAGGCACCCTGGTGTTCGTGGCATCTACGACGACCCAGC
CACCAAGATGAATGAAGAGACCAGAAAGCTCTTCAGTGAGCTGGGCAGCAGGAACGCCAAGGAGCTGGCC
TTCCGGGACAGCTGGGTGTTTGTGCGGGCCAAGGGTGTGCAGAACAAAGAGCCCTTTGAGCAGCAGTGGA
AGAACAGTAAGCACAGCAACAAGTACGAAGGCTGGCCGAGGCGCTGGAGATGGAAGGCTGTATCCCGCG
GAGAAGCACGGCCAGC

ACGCGTACGCGGCCGCTCGAGCAGAACTCATCTCAGAAGAGGATCTGGCAGCAATGATATCCTGGATT
ACAAGGATGACGACGATAAGGTTTAA

Protein Sequence:	>RC229664 representing NM_001171133 Red=Cloning site Green=Tags(s)
-------------------	---

MRLAGPESSVTAAPRARKYKCLPQPCPEEHLAFRVVSGAANVIGPKICLEDKMLMSSVKDNVGRGLNIA
LVNGVSGELIEARAFDMWAGDVNDLLKFIRPLHEGTLVFVASYDDPATKMNEETRKLFSSELGSRNAKELA
FRDSWVFVGAAGVQNKSPFEQHVKNKSHSNKYEGWPEALEMEGCIPRRSTAS

TRTRPLEQKLISEEDLAANDILDYKDDDDKV

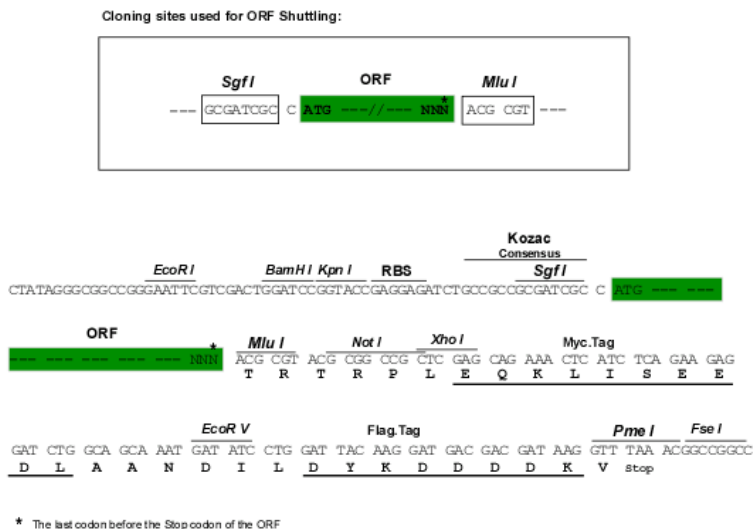


[View online »](#)

Chromatograms: https://cdn.origene.com/chromatograms/ja1449_g01.zip

Restriction Sites: SgfI-MluI

Cloning Scheme:



ACCN: NM_001171133

ORF Size: 576 bp

OTI Disclaimer: The molecular sequence of this clone aligns with the gene accession number as a point of reference only. However, individual transcript sequences of the same gene can differ through naturally occurring variations (e.g. polymorphisms), each with its own valid existence. This clone is substantially in agreement with the reference, but a complete review of all prevailing variants is recommended prior to use. [More info](#)

OTI Annotation: This clone was engineered to express the complete ORF with an expression tag. Expression varies depending on the nature of the gene.

Components: The ORF clone is ion-exchange column purified and shipped in a 2D barcoded Matrix tube containing 10ug of transfection-ready, dried plasmid DNA (reconstitute with 100 ul of water).

Reconstitution Method:

1. Centrifuge at 5,000xg for 5min.
2. Carefully open the tube and add 100ul of sterile water to dissolve the DNA.
3. Close the tube and incubate for 10 minutes at room temperature.
4. Briefly vortex the tube and then do a quick spin (less than 5000xg) to concentrate the liquid at the bottom.
5. Store the suspended plasmid at -20°C. The DNA is stable for at least one year from date of shipping when stored at -20°C.

RefSeq: [NM_001171133.3](#)

RefSeq ORF: 579 bp

Locus ID: 60343

UniProt ID: [P98173](#)

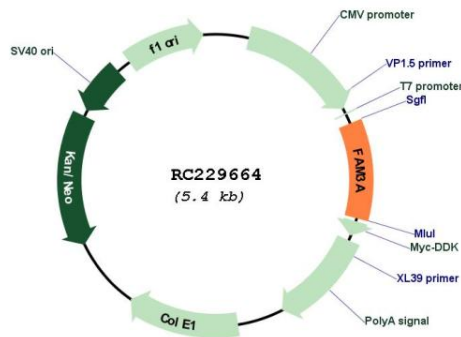
Cytogenetics: Xq28

Protein Families: Secreted Protein, Transmembrane

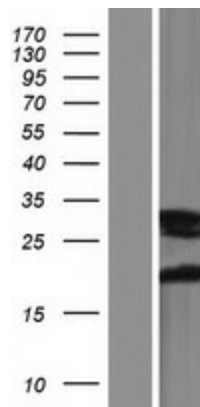
MW: 21.6 kDa

Gene Summary: This gene encodes a cytokine-like protein. The expression of this gene may be regulated by peroxisome proliferator-activated receptor gamma, and the encoded protein may be involved in the regulation of glucose and lipid metabolism. Alternative splicing results in multiple transcript variants. [provided by RefSeq, Aug 2013]

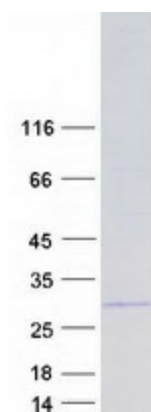
Product images:



Circular map for RC229664



Western blot validation of overexpression lysate (Cat# [LY432664]) using anti-DDK antibody (Cat# [TA50011-100]). Left: Cell lysates from untransfected HEK293T cells; Right: Cell lysates from HEK293T cells transfected with RC229664 using transfection reagent MegaTran 2.0 (Cat# [TT210002]).



Coomassie blue staining of purified FAM3A protein (Cat# [TP329664]). The protein was produced from HEK293T cells transfected with FAM3A cDNA clone (Cat# RC229664) using MegaTran 2.0 (Cat# [TT210002]).