

Product datasheet for **RC229659**

RNF4 (NM_001185009) Human Tagged ORF Clone

Product data:

Product Type: Expression Plasmids
Product Name: RNF4 (NM_001185009) Human Tagged ORF Clone
Tag: Myc-DDK
Symbol: RNF4
Synonyms: RES4-26; SLX5; SNURF
Mammalian Cell Selection: Neomycin
Vector: pCMV6-Entry (PS100001)
E. coli Selection: Kanamycin (25 ug/mL)
ORF Nucleotide Sequence: >RC229659 ORF sequence
 Red=Cloning site Blue=ORF Green=Tags(s)

TTTTGTAATACGACTCACTATAGGGCGCCGGGAATTCGTCGACTGGATCCGGTACCGAGGAGATCTGCC
 GCC**CGGATCGCC**

ATGAGTACAAGAAAGCGTCGTGGTGGAGCAATAAATTCTAGACAAGCTCAGAAGCGAACTCGGGAAGCGA
 CCTCCACCCCGAGATCTCCTTGAAGCAGAACCATAGAAGCTCGTGAAACTGCTGGAGATGAAATTGT
 GGACCTCACTTGTGAATCTTAGAGCCTGTGGTGGTTGATCTGACTCACAATGACTCTGTTGTGATTGTT
 GACGAAAGAAGAAGACCAAGGAGGAATGCTAGGAGGCTGCCCCAGGACCATGCTGACAGCTGTGTGGTGA
 GCAGTGACGATGAGGAGTTGTCCAGGGACAGGGACGTATATGTGACTACCATACTCCAGAAACGCCAG
 GGATGAGGGCGCTACAGGCCTCAGGCCCTCAGGTACTGTGAGTTGCCATCTGCATGGACGGATACTCA
 GAGATCGTGCAGAAATGGACGTCTCATCGTTTTCCACAGAATGCGGCCATGTCTTCTGTAGCCAGTGCCTCC
 GTGATTCCTGAAGAATGCTAATACTTGCCCAACTGTAGGAAAAAGATCAACCACAAACGGTACCACCC
 CATTATATA

ACGCGTACGCGGCCGCTCGAGCAGAAACTCATCTCAGAAGAGGATCTGGCAGCAATGATATCCTGGATT
 ACAAGGATGACGACGATAAGGTTTAA

Protein Sequence: >RC229659 protein sequence
 Red=Cloning site Green=Tags(s)

MSTRKRRGGAINSRQAQKRTREATSTPEISLEAEPIELVETAGDEIVDLTCELEPVVVDLTHNDSVVIV
 DERRRPRRNARLPODHADSCVVSDDDEL SRDRDVVYVTTHTPRNARDEGATGLRPSGTVSCPICMDGYS
 EIVQNGRLIVSTECGHVFCSQLRDSLKNANTCPTCRKKINHKRYHPIYI

TRTRPLEQKLISEEDLAANDILDYKDDDDKV



[View online »](#)

Chromatograms: https://cdn.origene.com/chromatograms/mk6365_b07.zip

Restriction Sites: SgfI-MluI

Cloning Scheme:



ACCN: NM_001185009

ORF Size: 570 bp

OTI Disclaimer: The molecular sequence of this clone aligns with the gene accession number as a point of reference only. However, individual transcript sequences of the same gene can differ through naturally occurring variations (e.g. polymorphisms), each with its own valid existence. This clone is substantially in agreement with the reference, but a complete review of all prevailing variants is recommended prior to use. [More info](#)

OTI Annotation: This clone was engineered to express the complete ORF with an expression tag. Expression varies depending on the nature of the gene.

Components: The ORF clone is ion-exchange column purified and shipped in a 2D barcoded Matrix tube containing 10ug of transfection-ready, dried plasmid DNA (reconstitute with 100 ul of water).

Reconstitution Method:

1. Centrifuge at 5,000xg for 5min.
2. Carefully open the tube and add 100ul of sterile water to dissolve the DNA.
3. Close the tube and incubate for 10 minutes at room temperature.
4. Briefly vortex the tube and then do a quick spin (less than 5000xg) to concentrate the liquid at the bottom.
5. Store the suspended plasmid at -20°C. The DNA is stable for at least one year from date of shipping when stored at -20°C.

RefSeq: [NM_001185009.2](#)

RefSeq Size: 3493 bp

RefSeq ORF: 573 bp

Locus ID: 6047

UniProt ID: [P78317](#)

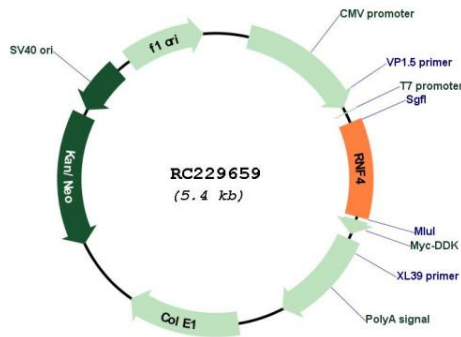
Cytogenetics: 4p16.3

Protein Families: Transcription Factors

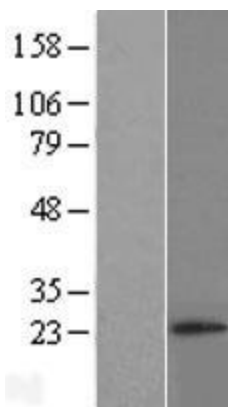
MW: 21.3 kDa

Gene Summary: The protein encoded by this gene contains a RING finger motif and acts as a transcription regulator. This protein has been shown to interact with, and inhibit the activity of, TRPS1, a transcription suppressor of GATA-mediated transcription. Transcription repressor ZNF278/PATZ is found to interact with this protein, and thus reduce the enhancement of androgen receptor-dependent transcription mediated by this protein. Studies of the mouse and rat counterparts suggested a role of this protein in spermatogenesis. A pseudogene of this gene is found on chromosome 1.[provided by RefSeq, Jul 2010]

Product images:



Circular map for RC229659



Western blot validation of overexpression lysate (Cat# [LY432659]) using anti-DDK antibody (Cat# [TA50011-100]). Left: Cell lysates from untransfected HEK293T cells; Right: Cell lysates from HEK293T cells transfected with RC229659 using transfection reagent MegaTran 2.0 (Cat# [TT210002]).