

Product datasheet for RC229656

CD99L2 (NM_001184808) Human Tagged ORF Clone

Product data:

Product Type: Expression Plasmids
Product Name: CD99L2 (NM_001184808) Human Tagged ORF Clone
Tag: Myc-DDK
Symbol: CD99L2
Synonyms: CD99B; MIC2L1
Mammalian Cell Selection: Neomycin
Vector: pCMV6-Entry (PS100001)
E. coli Selection: Kanamycin (25 ug/mL)
ORF Nucleotide Sequence: >RC229656 representing NM_001184808
 Red=Cloning site Blue=ORF Green=Tags(s)

TTTTGTAATACGACTCACTATAGGGCGGCCGGAATTCGTCGACTGGATCCGGTACCGAGGAGATCTGCC
 GCC**CGATCGCC**

ATGGTGGCCTGGCGCTCGCGTTCCTTGCTGCCTCGTTTCTCCTTGGCCACCCTGGTCCAGCGAGGAT
 CTGGGGACTTTGATGATTTAACTGGAGGATGCAGTCAAAGAACTTCTCAGTAAAGCAGCCATGGGA
 CCACACCACCACCACAACCAATAGGCCAGGAACCACCAGAGCTCCGGCAAACCTCCAGGTAGTGGG
 TTGGACTTGGCTGATGCTTTGGATGATCAAGATGATGGCCGAGGAAACCGGGTATAGGAGGAAGAGGTG
 ATGGCCGGTACGGCAGCAATGACGACCCTGGATCTGGCATGGTGGCAGAGCCTGGCACCATTGCCGGGT
 GGCCAGCGCCCTGGCCATGGCCCTCATCGGTGCGTCTCCAGCTACATCTCTACCAGCAGAAGAAGTTC
 TGCTTCAGCATTAGCAGGGTCTCAACGAGACTACGTGAAGGGAGAGAACCTGGAAGCCGTGGTATGTG
 AGGAACCCCAAGTAAATACTCCACGTTGCACACGCAGTCTGCAGAGCCGCCGCCGCCGAACCAGC
 CCGGATC

ACGCGTACGCGGCCGCTCGAGCAGAACTCATCTCAGAAGAGGATCTGGCAGCAAATGATATCCTGGATT
 ACAAGGATGACGACGATAAGGTTTAA

Protein Sequence: >RC229656 representing NM_001184808
 Red=Cloning site Green=Tags(s)

MVAWRSAFLVCLAFSLATLVQRSGDFDDFNLEDAVKETSSVKQPWDHTTTTTNRPGTTRAPAKPPGSG
 LDLADALDDQDDGRRKPGIGGRGDGRYGSNDP GSGMVAEPGTIAGVASALAMALIGAVSSYISYQQKF
 CFSIQQLNADYVKGENLEAVVCEEPQVKYSTLHTQSAEPPPPPEPARI

TRTRPLEQKLISEEDLAANDILDYKDDDDKV



Chromatograms: https://cdn.origene.com/chromatograms/ja1453_a11.zip

Restriction Sites: SgfI-MluI

Cloning Scheme:



ACCN: NM_001184808

ORF Size: 567 bp

OTI Disclaimer: The molecular sequence of this clone aligns with the gene accession number as a point of reference only. However, individual transcript sequences of the same gene can differ through naturally occurring variations (e.g. polymorphisms), each with its own valid existence. This clone is substantially in agreement with the reference, but a complete review of all prevailing variants is recommended prior to use. [More info](#)

OTI Annotation: This clone was engineered to express the complete ORF with an expression tag. Expression varies depending on the nature of the gene.

Components: The ORF clone is ion-exchange column purified and shipped in a 2D barcoded Matrix tube containing 10ug of transfection-ready, dried plasmid DNA (reconstitute with 100 ul of water).

Reconstitution Method:

1. Centrifuge at 5,000xg for 5min.
2. Carefully open the tube and add 100ul of sterile water to dissolve the DNA.
3. Close the tube and incubate for 10 minutes at room temperature.
4. Briefly vortex the tube and then do a quick spin (less than 5000xg) to concentrate the liquid at the bottom.
5. Store the suspended plasmid at -20°C. The DNA is stable for at least one year from date of shipping when stored at -20°C.

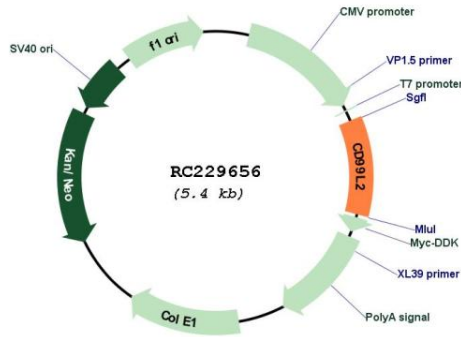
RefSeq: [NM_001184808.1](#), [NP_001171737.1](#)

RefSeq ORF: 570 bp

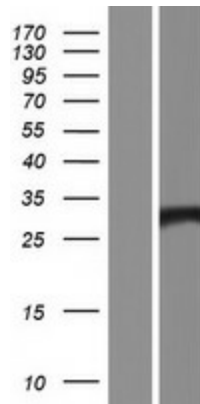
Locus ID: 83692

UniProt ID: [Q8TCZ2](#)

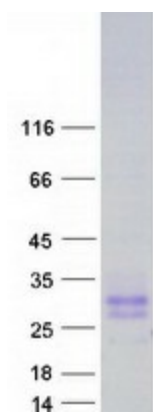
Cytogenetics: Xq28
Protein Families: Transmembrane
MW: 20.5 kDa
Gene Summary: This gene encodes a cell-surface protein that is similar to CD99. A similar protein in mouse functions as an adhesion molecule during leukocyte extravasation. Alternate splicing results in multiple transcript variants. [provided by RefSeq, May 2010]

Product images:


Circular map for RC229656



Western blot validation of overexpression lysate (Cat# [LY432656]) using anti-DDK antibody (Cat# [TA50011-100]). Left: Cell lysates from untransfected HEK293T cells; Right: Cell lysates from HEK293T cells transfected with RC229656 using transfection reagent MegaTran 2.0 (Cat# [TT210002]).



Coomassie blue staining of purified CD99L2 protein (Cat# [TP329656]). The protein was produced from HEK293T cells transfected with CD99L2 cDNA clone (Cat# RC229656) using MegaTran 2.0 (Cat# [TT210002]).