

## Product datasheet for RC229652

### TESC (NM\_001168325) Human Tagged ORF Clone

#### Product data:

**Product Type:** Expression Plasmids  
**Product Name:** TESC (NM\_001168325) Human Tagged ORF Clone  
**Tag:** Myc-DDK  
**Symbol:** TESC  
**Synonyms:** CHP3; TSC  
**Mammalian Cell Selection:** Neomycin  
**Vector:** pCMV6-Entry (PS100001)  
**E. coli Selection:** Kanamycin (25 ug/mL)  
**ORF Nucleotide Sequence:** >RC229652 representing NM\_001168325  
 Red=Cloning site Blue=ORF Green=Tags(s)

TTTTGTAATACGACTCACTATAGGGCGGCCGGAATTCGTCGACTGGATCCGGTACCGAGGAGATCTGCC  
 GCC**CGATCGCC**

ATGGGCGTGCCCACTCCGCTCTGAGGAGGTGCGGGAGCTCGAGGGCAAGACCGCTTCTCATCGGATC  
 AGATCGAGCAGCTCCATCGGAGATTTAAGCAGCTGAGTGGAGATCAGCCTACCATTCCGAACCTGCGCAA  
 GGGACCCAGTGGCTGGCTGATGAGATCAATTTGAGGACTTCTGACCATCATGTCTACTTCCGGCCC  
 ATCGACACCACCATGGACGAGGAACAGGTGGAGCTGTCCGGAAGGAGAAGCTGAGATTTCTGTTCCACA  
 TGTACGACTCGGACAGCGACGGCCGCATCACTCTGGAAGAATATCGAAATGTGGTCGAGGAGCTGCTGTC  
 GGGAAACCCTCACATCGAGAAGGAGTCCGCTCGCTCCATCGCCGACGGGGCCATGATGGAGCGGCCAGC  
 GTGTGCATGGGGCAGATGGAGCCTGATCAGGTGTACGAGGGGATCACCTTCGAGGACTTCTGAAGATCT  
 GGCAGGGGATCGACATTGAGACCAAGATGCACGTCCGCTTCTTAACATGGAAACCATGGCCCTCTGCCA  
 C

**ACGCGT**ACGCGGCCGCTCGAGCAGAACTCATCTCAGAAGAGGATCTGGCAGCAAATGATATCCTGGATT  
 ACAAGGATGACGACGATAAGGTTTAA

**Protein Sequence:** >RC229652 representing NM\_001168325  
 Red=Cloning site Green=Tags(s)

MGAHSASEEVRELEGKTFSSDQIEQLHRRFKQLSGDQPTIRNLRKGPSGLADEINFEDFLTIMSYFRP  
 IDTTMDEEQVELSRKEKLRFLFHMYSDSGRITL E EYRNVVEELL SGNPHIEKESARSIADGAMMEAAS  
 VCMQMEPDQVYEGITFEDFLKIWQGIETKMHVRF LN METMALCH

**TRTRPLEQKLISEEDLAANDILDYKDDDDKV**



[View online »](#)

**Chromatograms:** [https://cdn.origene.com/chromatograms/ja1510\\_d06.zip](https://cdn.origene.com/chromatograms/ja1510_d06.zip)

**Restriction Sites:** SgfI-MluI

**Cloning Scheme:**



**ACCN:** NM\_001168325

**ORF Size:** 561 bp

**OTI Disclaimer:** The molecular sequence of this clone aligns with the gene accession number as a point of reference only. However, individual transcript sequences of the same gene can differ through naturally occurring variations (e.g. polymorphisms), each with its own valid existence. This clone is substantially in agreement with the reference, but a complete review of all prevailing variants is recommended prior to use. [More info](#)

**OTI Annotation:** This clone was engineered to express the complete ORF with an expression tag. Expression varies depending on the nature of the gene.

**Components:** The ORF clone is ion-exchange column purified and shipped in a 2D barcoded Matrix tube containing 10ug of transfection-ready, dried plasmid DNA (reconstitute with 100 ul of water).

**Reconstitution Method:**

1. Centrifuge at 5,000xg for 5min.
2. Carefully open the tube and add 100ul of sterile water to dissolve the DNA.
3. Close the tube and incubate for 10 minutes at room temperature.
4. Briefly vortex the tube and then do a quick spin (less than 5000xg) to concentrate the liquid at the bottom.
5. Store the suspended plasmid at -20°C. The DNA is stable for at least one year from date of shipping when stored at -20°C.

**RefSeq:** [NM\\_001168325.1](#), [NP\\_001161797.1](#)

**RefSeq ORF:** 564 bp

**Locus ID:** 54997

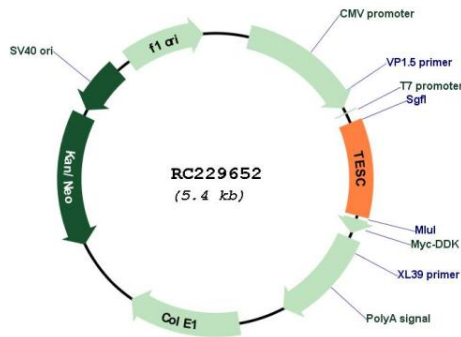
**UniProt ID:** [Q96BS2](#)

**Cytogenetics:** 12q24.22

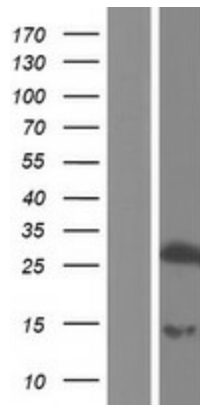
**MW:** 22 kDa

**Gene Summary:** Functions as an integral cofactor in cell pH regulation by controlling plasma membrane-type Na(+)/H(+) exchange activity. Promotes the maturation, transport, cell surface stability and exchange activity of SLC9A1/NHE1 at the plasma membrane. Promotes the induction of hematopoietic stem cell differentiation toward megakaryocytic lineage. Essential for the coupling of ERK cascade activation with the expression of ETS family genes in megakaryocytic differentiation. Also involved in granulocytic differentiation in a ERK-dependent manner. Inhibits the phosphatase activity of calcineurin.[UniProtKB/Swiss-Prot Function]

**Product images:**



Circular map for RC229652



Western blot validation of overexpression lysate (Cat# [LY432652]) using anti-DDK antibody (Cat# [TA50011-100]). Left: Cell lysates from untransfected HEK293T cells; Right: Cell lysates from HEK293T cells transfected with RC229652 using transfection reagent MegaTran 2.0 (Cat# [TT210002]).