

Product datasheet for **RC229645**

HDHD1A (PUDP) (NM_001178136) Human Tagged ORF Clone

Product data:

Product Type: Expression Plasmids
Product Name: HDHD1A (PUDP) (NM_001178136) Human Tagged ORF Clone
Tag: Myc-DDK
Symbol: HDHD1A
Synonyms: DXF68S1E; FAM16AX; GS1; HDHD1; HDHD1A
Mammalian Cell Selection: Neomycin
Vector: pCMV6-Entry (PS100001)
E. coli Selection: Kanamycin (25 ug/mL)
ORF Nucleotide Sequence: >RC229645 representing NM_001178136
Red=Cloning site Blue=ORF Green=Tags(s)

TTTTGTAATACGACTCACTATAGGGCGGCCGGAATTCGTCGACTGGATCCGGTACCGAGGAGATCTGCC
GCC**CGATCGCC**

ATGGCGCGCCCCCGCAGCCCGTACCCACCTCATCTTTGACATGGACGGACTTCTTCTGGATACTGAAC
GGCTGTATTCAGTGGTGTTCAGAAATATGTAATCGCTATGACAAGAAATACAGCTGGGATGTAAGTC
CCTGGTTATGGGGCGGAGAACTCATCCACCTGCGGAAACATGGCATCCCCTTGCACTGGCCACC
AGCTCGGGGTCGCGTCTGATGAAGACAAGCCGCCACAAGGATCTTCAGTTGTTTTCCACA
TTGTGCTGGGAGATGACCCGAAGTGCAGCATGGCAAGCCAGACCCGGACATCTTCTAGCTTGCCAA
GAGTTTCTCCCCCTCTGCTATGGAGAAGTGCCTTGTCTTTGAAGATGCTCCCAATGGGTGGAGCGG
GCCTGGCAGCTGGGATGCAGGTGGTCTGTTCTGACGAACTTGAGCCGAGATCTGACAACAAGG
CCACCCTGGTGTGAATCCCTGCAGGACTTCCAGCCGAGCTGTTTGGTTTGCCTCCTATGAG

ACGCGTACGCGGCCGCTCGAGCAGAACTCATCTCAGAAGAGGATCTGGCAGCAATGATATCCTGGATT
ACAAGGATGACGACGATAAGGTTTAA

Protein Sequence: >RC229645 representing NM_001178136
Red=Cloning site Green=Tags(s)

MAAPPQPVTHLIFDMDGLLLDTERLYSVVFQEICNRYDKKYSWDVKSVMGAEKLIIHLRKHGIPFALAT
SSGSASFDMKTSRHKEFFSLFSHIVLGDDPEVQHGPDPDIFLACAKRFSPPPAMEKCLVFEDAPNGVEA
ALAAGMQVVMVDPGNLSRDLTTKATLVLSLQDFPELFGLPSE

TRTRPLEQKLISEEDLAANDILDYKDDDDKV

Chromatograms: https://cdn.origene.com/chromatograms/ja1456_e12.zip



[View online »](#)

Restriction Sites: SgfI-MluI

Cloning Scheme:



ACCN: NM_001178136

ORF Size: 555 bp

OTI Disclaimer: The molecular sequence of this clone aligns with the gene accession number as a point of reference only. However, individual transcript sequences of the same gene can differ through naturally occurring variations (e.g. polymorphisms), each with its own valid existence. This clone is substantially in agreement with the reference, but a complete review of all prevailing variants is recommended prior to use. [More info](#)

OTI Annotation: This clone was engineered to express the complete ORF with an expression tag. Expression varies depending on the nature of the gene.

Components: The ORF clone is ion-exchange column purified and shipped in a 2D barcoded Matrix tube containing 10ug of transfection-ready, dried plasmid DNA (reconstitute with 100 ul of water).

Reconstitution Method:

1. Centrifuge at 5,000xg for 5min.
2. Carefully open the tube and add 100ul of sterile water to dissolve the DNA.
3. Close the tube and incubate for 10 minutes at room temperature.
4. Briefly vortex the tube and then do a quick spin (less than 5000xg) to concentrate the liquid at the bottom.
5. Store the suspended plasmid at -20°C. The DNA is stable for at least one year from date of shipping when stored at -20°C.

RefSeq: [NM_001178136.2](#)

RefSeq ORF: 558 bp

Locus ID: 8226

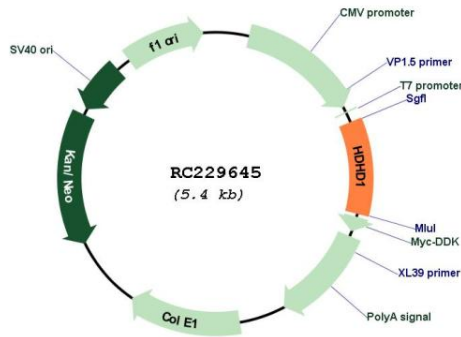
UniProt ID: [Q08623](#)

Cytogenetics: Xp22.31

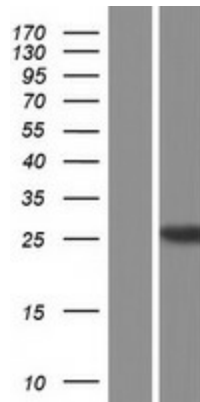
MW: 21 kDa

Gene Summary: This gene encodes a member of the haloacid dehalogenase-like (HAD) hydrolase superfamily. The encoded protein has no known biological function. This gene has a pseudogene on chromosome 1. Multiple alternatively spliced transcript variants encoding different isoforms have been identified. [provided by RefSeq, Jul 2010]

Product images:



Circular map for RC229645



Western blot validation of overexpression lysate (Cat# [LY432645]) using anti-DDK antibody (Cat# [TA50011-100]). Left: Cell lysates from untransfected HEK293T cells; Right: Cell lysates from HEK293T cells transfected with RC229645 using transfection reagent MegaTran 2.0 (Cat# [TT210002]).