

## Product datasheet for **RC229634**

### PLEKHG7 (NM\_001178097) Human Tagged ORF Clone

#### Product data:

**Product Type:** Expression Plasmids  
**Product Name:** PLEKHG7 (NM\_001178097) Human Tagged ORF Clone  
**Tag:** Myc-DDK  
**Symbol:** PLEKHG7  
**Synonyms:** C12orf74  
**Mammalian Cell Selection:** Neomycin  
**Vector:** pCMV6-Entry (PS100001)  
**E. coli Selection:** Kanamycin (25 ug/mL)  
**ORF Nucleotide Sequence:** >RC229634 representing NM\_001178097  
Red=Cloning site Blue=ORF Green=Tags(s)

TTTTGTAATACGACTCACTATAGGGCGCCGGGAATTCGTCGACTGGATCCGGTACCGAGGAGATCTGCC  
GCC**CGGATCGCC**

ATGGAGAAAACAGAGTCATTCTGTCCAGAGGTGCCACCCCAAGACTGTGGAGCCTCTCCTCGGCCCTCGC  
TGAGGAGCCTGCCAAAGAACCAGGGGAGTCTCCTCCAGTTTGACCGGCAAGCCCCAGGCCGATCTCCAC  
CTCGCCCACTTTGAGGAGATTAAGGACCCGTGGCTGTGGGACAAGGCAGGATGCCTGGCAGGTGACCACC  
TGGGGAAGCTGGGAGCTCCTGTGGCTTCCCATGTTACCTTTTGAAGAGCCTGCCAGGAAGCCCAAGG  
ATTCTTACACTTGCTGTCAACCCTTGAGACTCCACTCAAGATTGACCTCTGAACCTGAAAGGGCCCTGAA  
TGCAGCTGACTACTGGAGCCCCAAACCCGGCCCACTGACAAGTATCTCCCTCTGAGCTTCAGCCTGTC  
AATGAAGGGTCCCTTACCAGGCCTCTCTCGGCAGCAAGAAGGCCACTTCTGCCAGCCCCACCCTAC  
GACACCCTAGTCTCAGGTAACACAGCTC

**ACGCGT**ACGCGGCCGCTCGAGCAGAAACTCATCTCAGAAGAGGATCTGGCAGCAAATGATATCCTGGATT  
ACAAGGATGACGACGATAAGGTTTAA

**Protein Sequence:** >RC229634 representing NM\_001178097  
Red=Cloning site Green=Tags(s)

MEKTESFCPEVPPQDCGASPRPSLRSLPKNQGSLLQFDRQAPGRISTSPTLRRLRTRGCGTRQDAWQVTT  
WGSWGPVGFPCYLKSLPGSPKSSHLLSPLRLHSRLTSEPERALNAADSLEPQTRPTDKYLPPELQPV  
NEGLHQASLRQQEGHFLPSPTLRHPSQVTVL

**TRTRPLEQKLI**SEEDLAANDILDYKDDDDKV

**Chromatograms:** [https://cdn.origene.com/chromatograms/ja1454\\_e12.zip](https://cdn.origene.com/chromatograms/ja1454_e12.zip)



[View online »](#)

Restriction Sites: SgfI-MluI

Cloning Scheme:



ACCN: NM\_001178097

ORF Size: 519 bp

OTI Disclaimer: The molecular sequence of this clone aligns with the gene accession number as a point of reference only. However, individual transcript sequences of the same gene can differ through naturally occurring variations (e.g. polymorphisms), each with its own valid existence. This clone is substantially in agreement with the reference, but a complete review of all prevailing variants is recommended prior to use. [More info](#)

OTI Annotation: This clone was engineered to express the complete ORF with an expression tag. Expression varies depending on the nature of the gene.

Components: The ORF clone is ion-exchange column purified and shipped in a 2D barcoded Matrix tube containing 10ug of transfection-ready, dried plasmid DNA (reconstitute with 100 ul of water).

Reconstitution Method:

1. Centrifuge at 5,000xg for 5min.
2. Carefully open the tube and add 100ul of sterile water to dissolve the DNA.
3. Close the tube and incubate for 10 minutes at room temperature.
4. Briefly vortex the tube and then do a quick spin (less than 5000xg) to concentrate the liquid at the bottom.
5. Store the suspended plasmid at -20°C. The DNA is stable for at least one year from date of shipping when stored at -20°C.

RefSeq: [NM\\_001178097.3](#)

RefSeq ORF: 522 bp

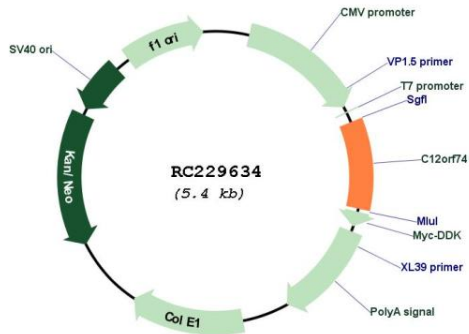
Locus ID: 338809

UniProt ID: [Q32Q52](#)

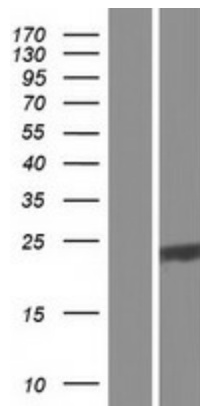
Cytogenetics: 12q22

MW: 19.6 kDa

Product images:



Circular map for RC229634



Western blot validation of overexpression lysate (Cat# [LY432634]) using anti-DDK antibody (Cat# [TA50011-100]). Left: Cell lysates from untransfected HEK293T cells; Right: Cell lysates from HEK293T cells transfected with RC229634 using transfection reagent MegaTran 2.0 (Cat# [TT210002]).