

Product datasheet for **RC229626**

G CSF (CSF3) (NM_001178147) Human Tagged ORF Clone

Product data:

Product Type: Expression Plasmids
Product Name: G CSF (CSF3) (NM_001178147) Human Tagged ORF Clone
Tag: Myc-DDK
Symbol: G CSF
Synonyms: C17orf33; CSF3OS; GCSF
Mammalian Cell Selection: Neomycin
Vector: pCMV6-Entry (PS100001)
E. coli Selection: Kanamycin (25 ug/mL)
ORF Nucleotide Sequence: >RC229626 representing NM_001178147
Red=Cloning site Blue=ORF Green=Tags(s)

TTTTGTAATACGACTCACTATAGGGCGCCGGGAATTCGTCGACTGGATCCGGTACCGAGGAGATCTGCC
GCC**CGATCGCC**

ATGGCTGGACCTGCCACCCAGAGCCCCATGAAGCTGATGGCCCTGCAGCTGCTGCTGTGGCACAGTGCAC
TCTGGACAGTGCAGGAAGCCACCCCTGGGCCCTGCCAGCTCCCTGCCAGAGCTTCTGCTCAAGTG
CTTAGAGCAAGTGAAGATCCAGGGCGATGGCGCAGCGCTCCAGGAGAAGCTGGCAGGCTGCTTGAAGC
CAACTCCATAGCGGCCTTTCTCTACCAGGGCTCCTGCAGGCCCTGGAAGGGATCTCCCCGAGTTGG
GTCCACCTTGGACACTGCAGCTGGAGCTCGCCGACTTGGCCACCACCATCTGGCAGCAGATGGAAGA
ACTGGGAATGGCCCTGCCCTGCAGCCACCCAGGGTGCATGCCGGCCTTCGCCTCTGCTTCCAGCGC
CGGGCAGGAGGGTCTGGTTGCCTCCCATCTGCAGAGCTTCTGGAGGTGTCGTACCGGTTCTACGCC
ACCTTGCCAGGCC

ACGCGTACGCGGCCGCTCGAGCAGAACTCATCTCAGAAGAGGATCTGGCAGCAAATGATATCCTGGATT
ACAAGGATGACGACGATAAGGTTTAA

Protein Sequence: >RC229626 representing NM_001178147
Red=Cloning site Green=Tags(s)

MAGPATQSPMKLMALQLLLWHSALWTVQEATPLGPASSLPQSFLKCLEQVRKIQQDGAALQEKLKAGCLS
QLHSGFLYQGLLQALEGISPELGPTLDTLQLDVADFATTIWQQMEELGMAPALQPTQGAMPFAFASAFQR
RAGGVLVASHLQSFLEVSYRVLRLHAQP

TRTRPLEQKLISEEDLAANDILDYKDDDDKV

Chromatograms: https://cdn.origene.com/chromatograms/ja1449_a08.zip



[View online »](#)

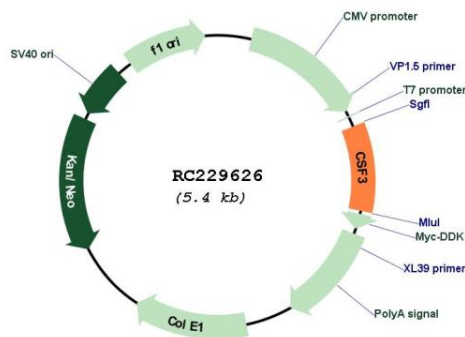
Protein Families: Druggable Genome, ES Cell Differentiation/IPS, Secreted Protein

Protein Pathways: Cytokine-cytokine receptor interaction, Hematopoietic cell lineage, Jak-STAT signaling pathway

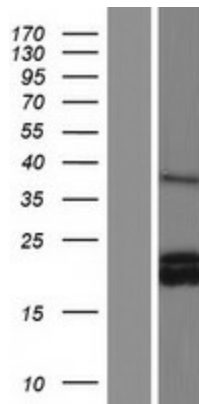
MW: 18.6 kDa

Gene Summary: This gene encodes a member of the IL-6 superfamily of cytokines. The encoded cytokine controls the production, differentiation, and function of granulocytes. Granulocytes are a type of white blood cell that are part of the innate immune response. A modified form of this protein is commonly administered to manage chemotherapy-induced neutropenia. Alternatively spliced transcript variants have been described for this gene. [provided by RefSeq, May 2020]

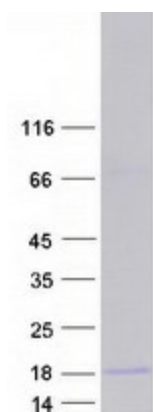
Product images:



Circular map for RC229626



Western blot validation of overexpression lysate (Cat# [LY432626]) using anti-DDK antibody (Cat# [TA50011-100]). Left: Cell lysates from untransfected HEK293T cells; Right: Cell lysates from HEK293T cells transfected with RC229626 using transfection reagent MegaTran 2.0 (Cat# [TT210002]).



Coomassie blue staining of purified CSF3 protein (Cat# [TP329626]). The protein was produced from HEK293T cells transfected with CSF3 cDNA clone (Cat# RC229626) using MegaTran 2.0 (Cat# [TT210002]).