

Product datasheet for RC229621

PNPLA4 (NM_001172672) Human Tagged ORF Clone

Product data:

Product Type:	Expression Plasmids
Product Name:	PNPLA4 (NM_001172672) Human Tagged ORF Clone
Tag:	Myc-DDK
Symbol:	PNPLA4
Synonyms:	DXS1283E; GS2; iPLA2eta
Mammalian Cell Selection:	Neomycin
Vector:	pCMV6-Entry (PS100001)
E. coli Selection:	Kanamycin (25 ug/mL)
ORF Nucleotide Sequence:	>RC229621 representing NM_001172672 Red=Cloning site Blue=ORF Green=Tags(s)

TTTTGTAATACGACTCACTATAGGGCGGCCGGAATTCGTCGACTGGATCCGGTACCGAGGAGATCTGCC
GCC**CGATCGCC**

ATGAAGCACATCAACCTATCATTTCAGCGTGTGGATTCTGGGCATTTACCACTGGGGGCAGCATCTG
CACTTTGCAGACATGGCAAAAACTTGTGAAGGATGTCAAAGCCTTCGCTGGGGCGTCTGCGGGATCGTT
GGGTGCTTCTGTTCTGCTAACAGCACCAGAAAAATAGAGGAATGTAACCAATTTACCTACAAGTTTGCC
GAAGAAATCAGAAGGCAGTCTTTCGGGGCAGTAACGCCCGTTATGACTTCATGGCCCGACTAAGAAGTG
GGATGGAGTCGATTCTTCTCCAGCGCTCACGAGCTGGCCAGAACCGACTGCACGTATCCATCACCAA
CGCCAAAACAGAGAAAACTCACTTAGTCTCCACTTTTTCTCCAGGGAGGGCCTCATTAAGTCTCCTA
GCCAGCAGTTTTGTGCCATTTATGCAGGACTGAAGCTAGTGGAATACAAAGGGCAGAAGTGGGTGGACG
GAGGCCTACCAACGCTCTTCCATCCTGCCCGTGGCCGGACAGTAACCATCTCCCCCTTCAGTGGACG
ACTGGACATCTCCCGCAGGACAAAGGGCAGCTAGATCTGTATGTTAATATCGCCAAGCAGGATATCATG
TTGTCCCTGGCAAACCTGGTGAGACTCAACCAAGCCCTTTTTCCCCCAAGCAAGAGGAAAATGGAATCTT
TGATCAGTGTGGTTTTGATGACACTGTTAAGTTTTACTTAAAGAAAATTGTTTTGAA

ACGCGTACGCGGCCGCTCGAGCAGAACTCATCTCAGAAGAGGATCTGGCAGCAAATGATATCCTGGATT
ACAAGGATGACGACGATAAGGTTTAA



[View online »](#)

Protein Sequence: >RC229621 representing NM_001172672
Red=Cloning site Green=Tags(s)

MKHINLSFAACGFLGIYHLGAASALCRHGKLVKDVKAFAGASAGSLGASVLLTAPEKIEECNQFTYKFA
 EEIRRQSFQAVTPGYDFMARLRSGMESILPPSAHELAQNRLHVSITNAKTRENHLVSTFSSREGLIKVLL
 ASSFPVIYAGLKLVEYKQKQWVDGGLTNALPILPVGRTVTISPFSGRLDISPQDKGQLDLVYNIKQDIM
 LSLANLVRLNQLFPPSKRKMESLYQCGFD DTVKFLLENWFE

TRTRPLEQKLISEEDLAANDILDYKDDDDKV

Chromatograms: https://cdn.origene.com/chromatograms/ja1448_f11.zip

Restriction Sites: SgfI-MluI

Cloning Scheme:

Cloning sites used for ORF Shuttling:



* The last codon before the Stop codon of the ORF

ACCN: NM_001172672

ORF Size: 759 bp

OTI Disclaimer: The molecular sequence of this clone aligns with the gene accession number as a point of reference only. However, individual transcript sequences of the same gene can differ through naturally occurring variations (e.g. polymorphisms), each with its own valid existence. This clone is substantially in agreement with the reference, but a complete review of all prevailing variants is recommended prior to use. [More info](#)

OTI Annotation: This clone was engineered to express the complete ORF with an expression tag. Expression varies depending on the nature of the gene.

Components: The ORF clone is ion-exchange column purified and shipped in a 2D barcoded Matrix tube containing 10ug of transfection-ready, dried plasmid DNA (reconstitute with 100 ul of water).

Reconstitution Method:

1. Centrifuge at 5,000xg for 5min.
2. Carefully open the tube and add 100ul of sterile water to dissolve the DNA.
3. Close the tube and incubate for 10 minutes at room temperature.
4. Briefly vortex the tube and then do a quick spin (less than 5000xg) to concentrate the liquid at the bottom.
5. Store the suspended plasmid at -20°C. The DNA is stable for at least one year from date of shipping when stored at -20°C.

RefSeq ORF: 501 bp

Locus ID: 8228

UniProt ID: [P41247](#)

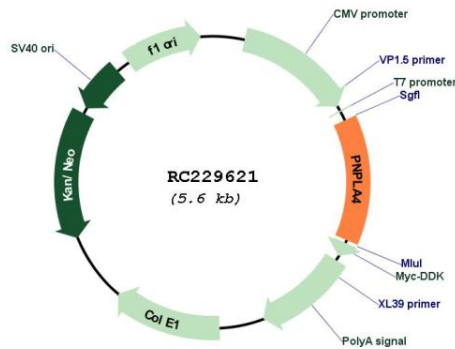
Cytogenetics: Xp22.31

Protein Pathways: Retinol metabolism

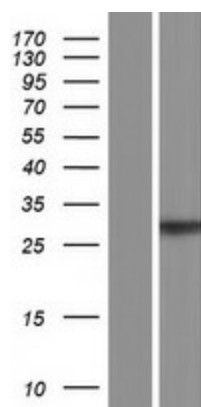
MW: 27.88 kDa

Gene Summary: This gene encodes a member of the patatin-like family of phospholipases. The encoded enzyme has both triacylglycerol lipase and transacylase activities and may be involved in adipocyte triglyceride homeostasis. Alternate splicing results in multiple transcript variants. A pseudogene of this gene is found on chromosome Y. [provided by RefSeq, Feb 2010]

Product images:



Circular map for RC229621



Western blot validation of overexpression lysate (Cat# [LY432621]) using anti-DDK antibody (Cat# [TA50011-100]). Left: Cell lysates from untransfected HEK293T cells; Right: Cell lysates from HEK293T cells transfected with RC229621 using transfection reagent MegaTran 2.0 (Cat# [TT210002]).