

Product datasheet for RC229617

PQBP1 (NM_001167992) Human Tagged ORF Clone

Product data:

Product Type: Expression Plasmids
Product Name: PQBP1 (NM_001167992) Human Tagged ORF Clone
Tag: Myc-DDK
Symbol: PQBP1
Synonyms: MRX2; MRX55; MRXS3; MRXS8; NPW38; RENS1; SHS
Mammalian Cell Selection: Neomycin
Vector: pCMV6-Entry (PS100001)
E. coli Selection: Kanamycin (25 ug/mL)
ORF Nucleotide Sequence: >RC229617 representing NM_001167992
Red=Cloning site Blue=ORF Green=Tags(s)

TTTTGTAATACGACTCACTATAGGGCGGCCGGAATTCGTCGACTGGATCCGGTACCGAGGAGATCTGCC
GCC**CGATCGCC**

ATGCCGCTGCCGTTGCGCTGCAGACCCGCTTGGCCAAGAGAGGCATCCTCAAACATCTGGAGCCTGAAC
CAGAGGAAGAGATCATTGCCGAGGACTATGACGATGATCCTGTGGACTACGAGGCCACCAGTTGGAGGG
CCTACCACCAAGCTGGTACAAGGTGTTGACCCCTTCTGCGGGCTCCCTTACTACTGGAATGCAGACCGG
GAAGAGGGCAAAGAACGGCGCCACCATCGCCGGGAGGAGCTGGCTCCCTATCCAAGAGCAAGAAGCGAG
TAAGCCGAAAGGATGAAGAGTTAGACCCCATGGACCCTAGCTCATACTCAGACGCCCCCGGGGCACGTG
GTCAACAGGACTCCCAAGCGGAATGAGGCCAAGACTGGCGCTGACACCACAGCAGCTGGGCCCTCTTC
CAGCAGCGGCCGTATCCATCCCCAGGGGCTGTGCTCCGGCCAATGCAGAGGCCTCCCGAACCAAGCAGC
AGGAT

ACGCGTACGCGGCCGCTCGAGCAGAACTCATCTCAGAAGAGGATCTGGCAGCAAATGATATCCTGGATT
ACAAGGATGACGACGATAAGGTTTAA

Protein Sequence: >RC229617 representing NM_001167992
Red=Cloning site Green=Tags(s)

MPLPVALQTRLAKRGILKHLPEPEEEIIAEDYDDDPVDYEATRLEGLPPSWYKVFDPSCGLPPYYWNADR
EEGKERRHHRREELAPYPKSKKAVSRKDEELDPMDPSSYSAPRGTWSTGLPKRNEAKTGADTTAAGPLF
QQRYPSPGAVLRANAASRTKQD

TRTRPLEQKLISEEDLAANDILDYKDDDDKV

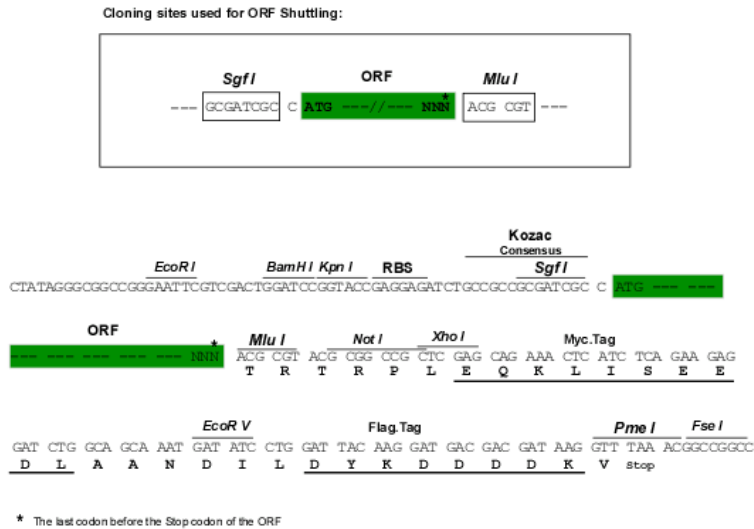
Chromatograms: https://cdn.origene.com/chromatograms/ja1465_f02.zip



[View online »](#)

Restriction Sites: SgfI-MluI

Cloning Scheme:



ACCN: NM_001167992

ORF Size: 495 bp

OTI Disclaimer: The molecular sequence of this clone aligns with the gene accession number as a point of reference only. However, individual transcript sequences of the same gene can differ through naturally occurring variations (e.g. polymorphisms), each with its own valid existence. This clone is substantially in agreement with the reference, but a complete review of all prevailing variants is recommended prior to use. [More info](#)

OTI Annotation: This clone was engineered to express the complete ORF with an expression tag. Expression varies depending on the nature of the gene.

Components: The ORF clone is ion-exchange column purified and shipped in a 2D barcoded Matrix tube containing 10ug of transfection-ready, dried plasmid DNA (reconstitute with 100 ul of water).

Reconstitution Method:

1. Centrifuge at 5,000xg for 5min.
2. Carefully open the tube and add 100ul of sterile water to dissolve the DNA.
3. Close the tube and incubate for 10 minutes at room temperature.
4. Briefly vortex the tube and then do a quick spin (less than 5000xg) to concentrate the liquid at the bottom.
5. Store the suspended plasmid at -20°C. The DNA is stable for at least one year from date of shipping when stored at -20°C.

RefSeq: [NM_001167992.1](#), [NP_001161464.1](#)

RefSeq ORF: 498 bp

Locus ID: 10084

UniProt ID: [O60828](#)

Cytogenetics: Xp11.23

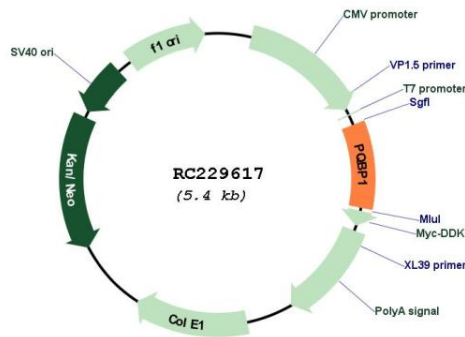
Protein Families: Transcription Factors

Protein Pathways: Spliceosome

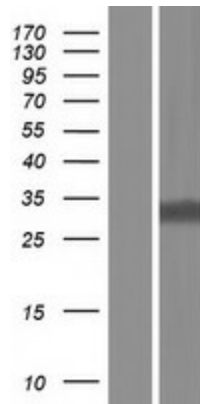
MW: 19.2 kDa

Gene Summary: This gene encodes a nuclear polyglutamine-binding protein that is involved with transcription activation. The encoded protein contains a WW domain. Mutations in this gene have been found in patients with Renpenning syndrome 1 and other syndromes with X-linked cognitive disability. Multiple alternatively spliced transcript variants that encode different protein isoforms have been described for this gene.[provided by RefSeq, Nov 2009]

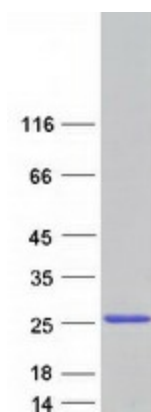
Product images:



Circular map for RC229617



Western blot validation of overexpression lysate (Cat# [LY432617]) using anti-DDK antibody (Cat# [TA50011-100]). Left: Cell lysates from untransfected HEK293T cells; Right: Cell lysates from HEK293T cells transfected with RC229617 using transfection reagent MegaTran 2.0 (Cat# [TT210002]).



Coomassie blue staining of purified PQBP1 protein (Cat# [TP329617]). The protein was produced from HEK293T cells transfected with PQBP1 cDNA clone (Cat# RC229617) using MegaTran 2.0 (Cat# [TT210002]).