

Product datasheet for **RC229599**

Aquaporin 1 (AQP1) (NM_001185062) Human Tagged ORF Clone

Product data:

Product Type: Expression Plasmids
Product Name: Aquaporin 1 (AQP1) (NM_001185062) Human Tagged ORF Clone
Tag: Myc-DDK
Symbol: Aquaporin 1
Synonyms: AQP-CHIP; CHIP28; CO
Mammalian Cell Selection: Neomycin
Vector: pCMV6-Entry (PS100001)
E. coli Selection: Kanamycin (25 ug/mL)
ORF Nucleotide Sequence: >RC229599 representing NM_001185062
Red=Cloning site Blue=ORF Green=Tags(s)

TTTTGTAATACGACTCACTATAGGGCGGCCGGAATTCGTCGACTGGATCCGGTACCGAGGAGATCTGCC
GCC**CGGATCGCC**

ATGCAGTCGGGCATGGGGTGAATGTTCTGGACTTTTGGCTGGCTGATGGTGTGAACCGGGCCAGGGCC
TGGGCATCGAGATCATCGGGACCCTCCAGCTGGTCTATGCGTGTGGCTACTACCGACCGGAGGCGCCG
TGACCTTGGTGGCTCAGCCCCCTTGCATCGGCCTCTGTAGCCCTTGGACACCTCCTGGCTATTGAC
TACTGGCTGTGGGATTAACCCTGCTCGGTCTTTGGCTCCGCGGTGATCACACACAATTCAGCAACC
ACTGGATTTTCTGGGTGGGGCCATTCATCGGGGAGCCCTGGCTGTACTCATCTACGACTCATCCTGGC
CCCACGCAGCAGTGACCTCACAGACCGCTGAAGGTGTGGACCAGCGGCCAGGTGGAGGAGTATGACCTG
GATGCCGACGACATCAACTCCAGGGTGGAGATGAAGCCCAA

ACGCGTACGCGGCCGCTCGAGCAGAACTCATCTCAGAAGAGGATCTGGCAGCAAATGATATCCTGGATT
ACAAGGATGACGACGATAAGGTTTAA

Protein Sequence: >RC229599 representing NM_001185062
Red=Cloning site Green=Tags(s)

MQSGMGWNVLDLDFWLADGVNSGQGLGIEIIGTLQLVLCVLATTDRLRRRDLGGSAPLAIGLSVALGHLLAID
YTGCGINPARSFGSAVITHNFSNHWFVWGPFIGGALAVLIYDFILAPRSSDLTDRVKVWTSQGVVEEYDL
DADDINSRVEMKPK

TRTRPLEQKLISEEDLAANDILDYKDDDDKV

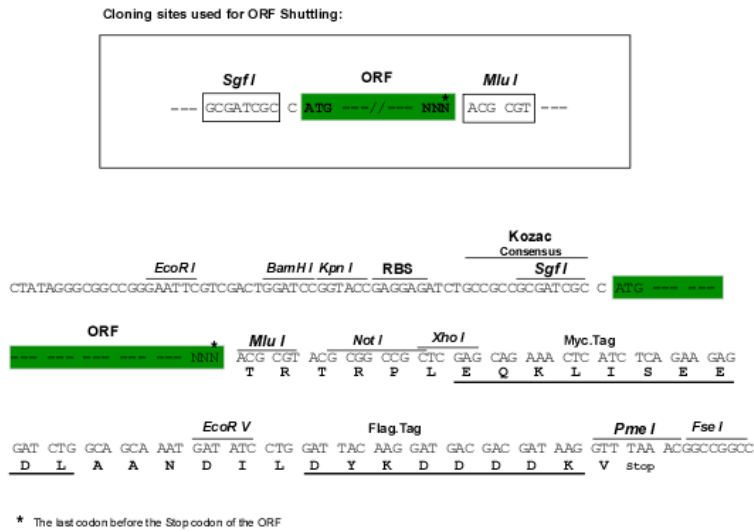
Chromatograms: https://cdn.origene.com/chromatograms/ja1456_f10.zip



[View online >](#)

Restriction Sites: SgfI-MluI

Cloning Scheme:



ACCN: NM_001185062

ORF Size: 462 bp

OTI Disclaimer: The molecular sequence of this clone aligns with the gene accession number as a point of reference only. However, individual transcript sequences of the same gene can differ through naturally occurring variations (e.g. polymorphisms), each with its own valid existence. This clone is substantially in agreement with the reference, but a complete review of all prevailing variants is recommended prior to use. [More info](#)

OTI Annotation: This clone was engineered to express the complete ORF with an expression tag. Expression varies depending on the nature of the gene.

Components: The ORF clone is ion-exchange column purified and shipped in a 2D barcoded Matrix tube containing 10ug of transfection-ready, dried plasmid DNA (reconstitute with 100 ul of water).

Reconstitution Method:

1. Centrifuge at 5,000xg for 5min.
2. Carefully open the tube and add 100ul of sterile water to dissolve the DNA.
3. Close the tube and incubate for 10 minutes at room temperature.
4. Briefly vortex the tube and then do a quick spin (less than 5000xg) to concentrate the liquid at the bottom.
5. Store the suspended plasmid at -20°C. The DNA is stable for at least one year from date of shipping when stored at -20°C.

RefSeq: [NM_001185062.1](#), [NP_001171991.1](#)

RefSeq ORF: 465 bp

Locus ID: 358

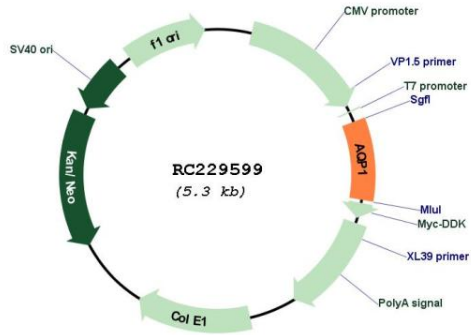
Cytogenetics: 7p14.3

Protein Families: Druggable Genome, Ion Channels: Other, Transmembrane

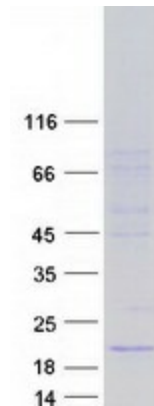
MW: 17.1 kDa

Gene Summary: This gene encodes a small integral membrane protein with six bilayer spanning domains that functions as a water channel protein. This protein permits passive transport of water along an osmotic gradient. This gene is a possible candidate for disorders involving imbalance in ocular fluid movement. [provided by RefSeq, Aug 2016]

Product images:



Circular map for RC229599



Coomassie blue staining of purified AQP1 protein (Cat# [TP329599]). The protein was produced from HEK293T cells transfected with AQP1 cDNA clone (Cat# RC229599) using MegaTran 2.0 (Cat# [TT210002]).